

STANDARD ARRIVAL CHART
INSTRUMENT
(STAR) - ICAO

AERODROME ELEV 236 ft

Bydgoszcz TOWER 131.000

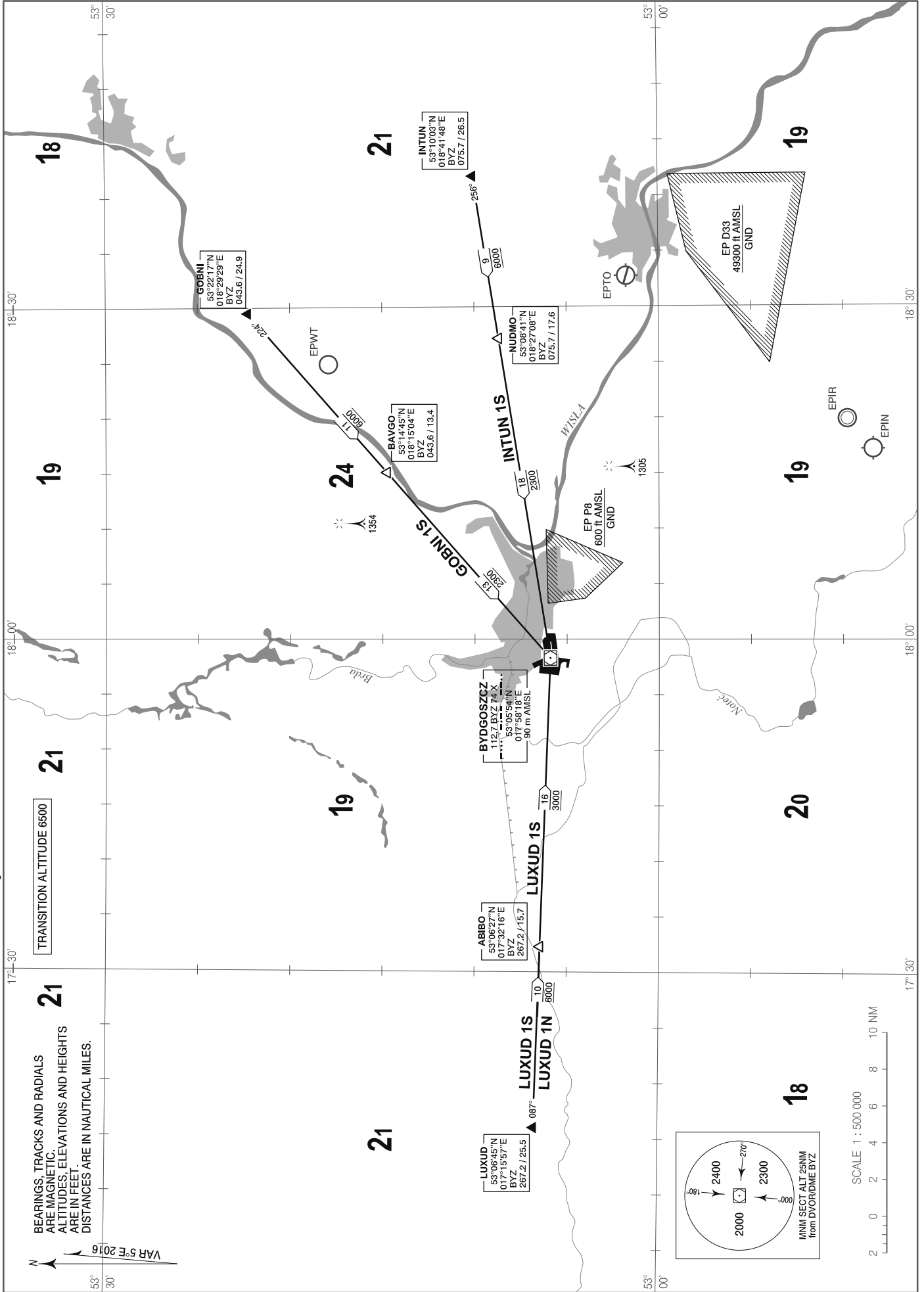
Bydgoszcz - Szawerowo
RWY 08 / 26

Correction: STAR GOBNI 1N removed. STAR INTUN 1N renamed to INTUN 1S. Holding removed.

BEARINGS, TRACKS AND RADIALS
ARE MAGNETIC.
ALTITUDES, ELEVATIONS AND HEIGHTS
ARE IN FEET.
DISTANCES ARE IN NAUTICAL MILES.

VAR 5°E 2016

TRANSITION ALTITUDE 6500



**STANDARD ARRIVAL CHART
INSTRUMENT (STAR) - ICAO**
**Bydgoszcz-Szwederowo
RWY 08/26**

DESIGNATOR	IDENTIFICATION SIGNIFICANT POINTS	MAG TRACK (°)	DISTANCE (NM)	ALTITUDE RESTRICTION	REMARKS
INTUN 1S INTUN ONE SIERRA	▲ REP INTUN	-	-	-	
	△ REP NUDMO	256	8.93	<u>6000 ft</u>	
	△ DVOR/DME BYZ	256	17.59	<u>2300 ft</u>	
LUXUD 1N LUXUD ONE NOVEMBER	▲ REP LUXUD	-	-	-	
	△ REP ABIBO	087	9.84	<u>6000 ft</u>	
LUXUD 1S LUXUD ONE SIERRA	▲ REP LUXUD	-	-	-	
	△ REP ABIBO	087	9.84	<u>6000 ft</u>	
	△ DVOR/DME BYZ	087	15.70	<u>3000 ft</u>	
GOBNI 1S GOBNI ONE SIERRA	▲ REP GOBNI	-	-	-	
	△ REP BAVGO	224	11.48	<u>6000 ft</u>	
	△ DVOR/DME BYZ	224	13.43	<u>2300 ft</u>	