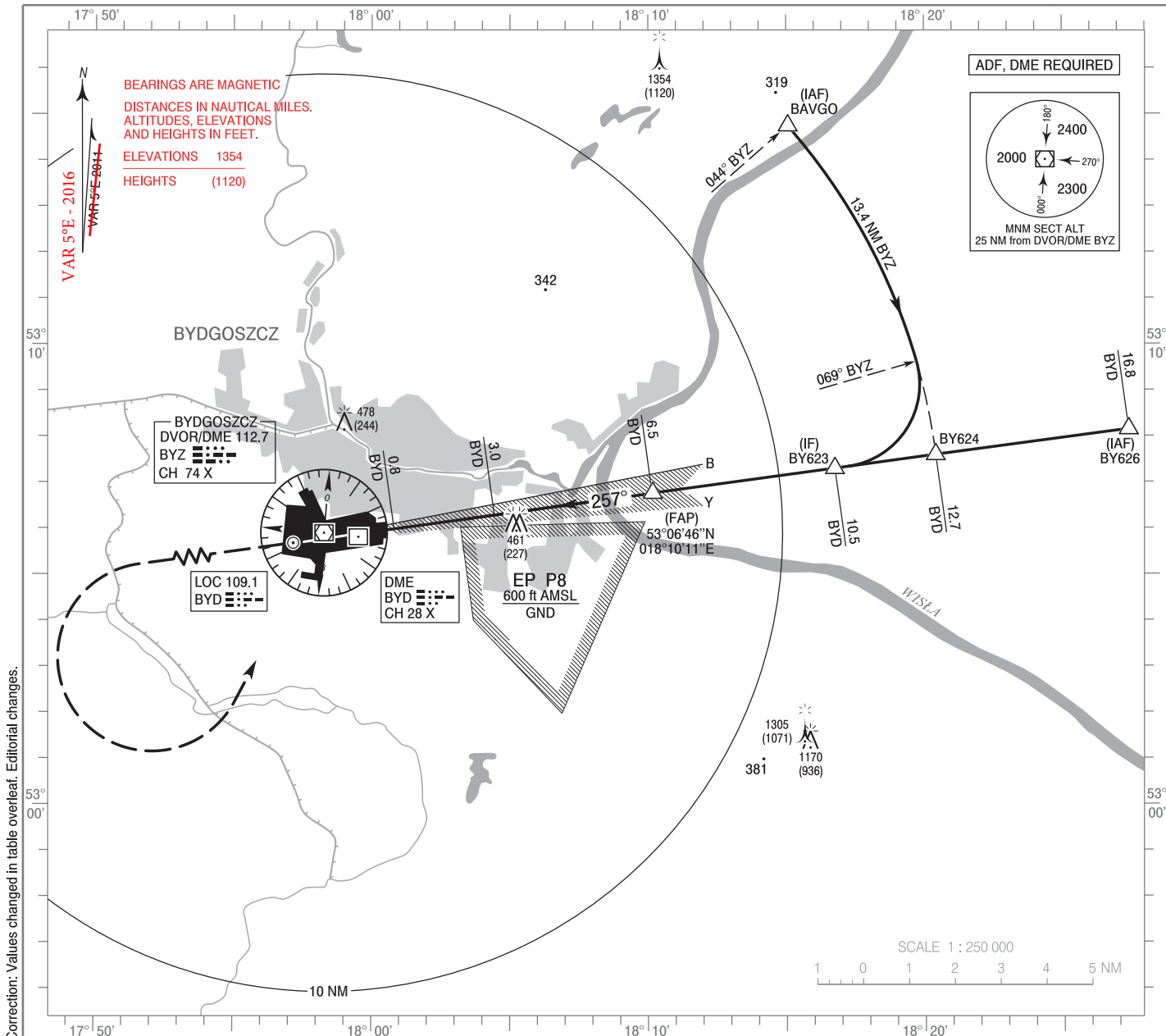


**INSTRUMENT
APPROACH
CHART - ICAO**

AERODROME ELEV 236 ft
THR RWY 26 ELEV 234 ft
HEIGHTS RELATED TO THR RWY 26

TWR 131.000

**BYDGOSZCZ / Szvederowo
ILS z or LOC z
RWY 26 (CAT A/B/C/D)**

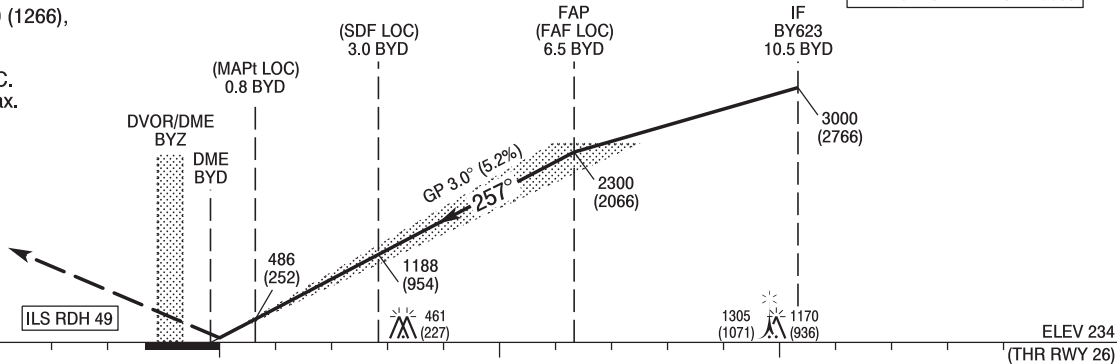


Correction: Values changed in table overleaf. Editorial changes.

MISSED APPROACH

Climb straight ahead to 1500 (1266),
turn left to DVOR/DME BYZ
climbing to 2300 (2066).
Further instructions from ATC.
Turn limited to 185 kt IAS max.

TRANSITION ALTITUDE 6500



SCALE 1 : 250 000

NM FROM THR RWY 26

OCA (OCH)					Distance FAF - MAPt 5.7								
Cat. of ACFT	Cat. I	A	B	C	D	Speed	kt	80	100	120	140	160	180
		Straight-in	LOC	429 (195)	441 (207)	449 (215)	460 (226)	Time	min : s	4 : 16	3 : 25	2 : 51	2 : 26
When stepdown fix not received				Rate of descent	ft / min	Final approach distance/altitude (height)							
Circling (OCH AAL)		710 (476)	710 (476)			710 (476)	710 (476)	Distance	5	4	3	2	
		720 (484)	780 (544)	880 (644)	930 (694)	Altitude (height)	1830 (1596)	1510 (1276)	1190 (956)	870 (636)			

INSTRUMENT
APPROACH
CHART - ICAOBYDGOSZCZ / Szwederowo
ILS z or LOC z
RWY 26 (CAT A/B/C/D)

FIX / POINT	LATITUDE	LONGITUDE	FIX FORMATION	
IAF BAVGO	53°14'45.4"N	018°15'04.0"E	048.58° GEO (044° MAG) DVOR BYZ	13.43 NM DME BYZ
IAF BY626	53°08'09.0"N	018°27'11.9"E	262.42° GEO (257° MAG) LOC BYD	16.84 NM DME BYD
BY624	53°07'36.2"N	018°20'24.0"E	262.33° GEO (257° MAG) LOC BYD	12.71 NM DME BYD
IF BY623	53°07'18.4"N	018°16'45.0"E	262.28° GEO (257° MAG) LOC BYD	10.49 NM DME BYD
FAP (FAF LOC)	53°06'46.1"N	018°10'10.9"E	262.20° GEO (257° MAG) LOC BYD	6.49 NM DME BYD
SDF (LOC)	53°06'17.5"N	018°04'26.5"E	262.12° GEO (257° MAG) LOC BYD	3.00 NM DME BYD
MAPt (LOC)	53°05'59.4"N	018°00'49.1"E	262.07° GEO (257° MAG) LOC BYD	0.80 NM DME BYD
Final approach descent angle: 3.00°				