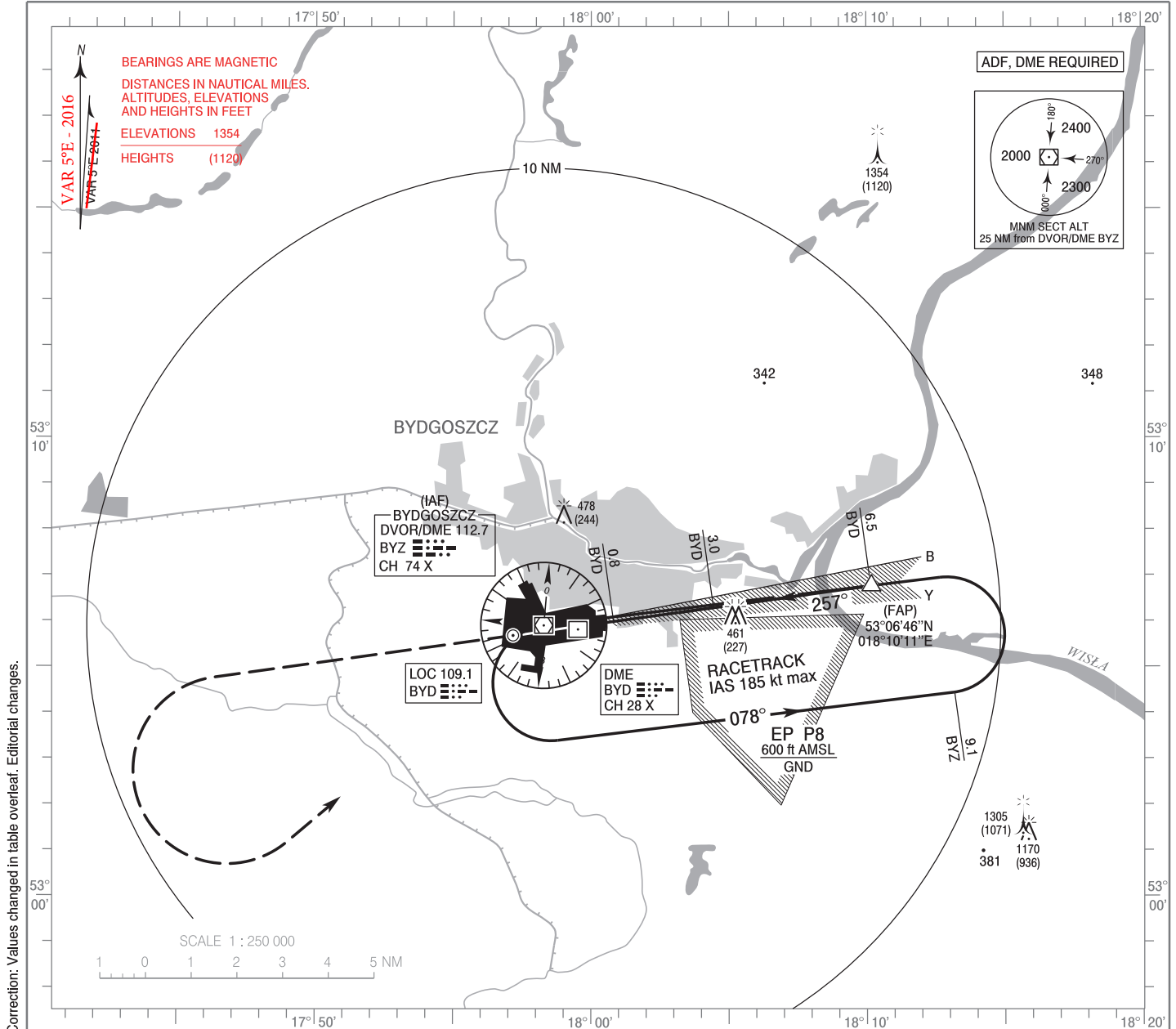


**INSTRUMENT
APPROACH
CHART - ICAO**

AERODROME ELEV 236 ft
THR RWY 26 ELEV 234 ft
HEIGHTS RELATED TO THR RWY 26

TWR 131.000

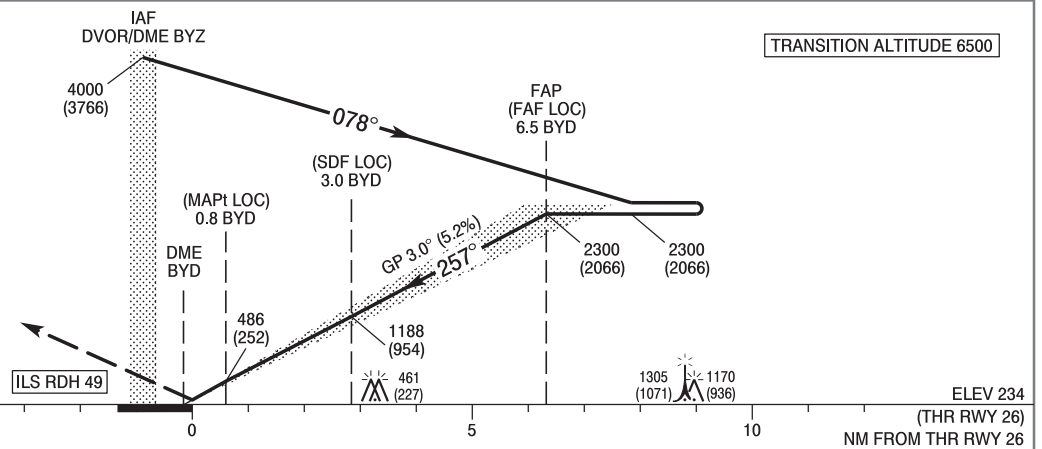
**BYDGOSZCZ / Szvederowo
ILS y or LOC y
RWY 26 (CAT A/B/C/D)**



Correction: Values changed in table overleaf. Editorial changes.

MISSED APPROACH

Climb straight ahead to 1500 (1266),
turn left to DVOR/DME BYZ
climbing to 2300 (2066).
Further instructions from ATC.
Turn limited to 185 kt IAS max.



SCALE 1 : 250 000 5 0 5 10 NM FROM THR RWY 26

		OCA (OCH)				Distance FAF - MAPt 5.7 NM							
Cat. of ACFT	Cat. I LOC	A	B	C	D	Speed	kt	80	100	120	140	160	180
		Straight-in		429 (195)	441 (207)	449 (215)	460 (226)	Time	min : s	4 : 16	3 : 25	2 : 51	2 : 26
	600 (366)		600 (366)	600 (366)	600 (366)	Rate of descent	ft / min	430	540	640	750	850	960
		When stepdown fix not received				Final approach distance/altitude (height)							
Circling (OCH AAL)		710 (476)	710 (476)	710 (476)	710 (476)	Distance		5	4	3	2		
		720 (484)	780 (544)	880 (644)	930 (694)	Altitude (height)		1830 (1596)	1510 (1276)	1190 (956)	870 (636)		

**INSTRUMENT
APPROACH
CHART - ICAO**

**BYDGOSZCZ / Szwederowo
ILS y or LOC y
RWY 26 (CAT A/B/C/D)**

FIX / POINT	LATITUDE	LONGITUDE	FIX FORMATION	
IAF DVOR/DME BYZ	53°05'54.3"N	017°58'18.2"E		
FAP (FAF LOC)	53°06'46.1"N	018°10'10.9"E	262.20° GEO (257° MAG) LOC BYD	6.49 NM DME BYD
SDF (LOC)	53°06'17.5"N	018°04'26.5"E	262.12° GEO (257° MAG) LOC BYD	3.00 NM DME BYD
MAPt (LOC)	53°05'59.4"N	018°00'49.1"E	262.07° GEO (257° MAG) LOC BYD	0.80 NM DME BYD
Final approach descent angle: 3.00°				