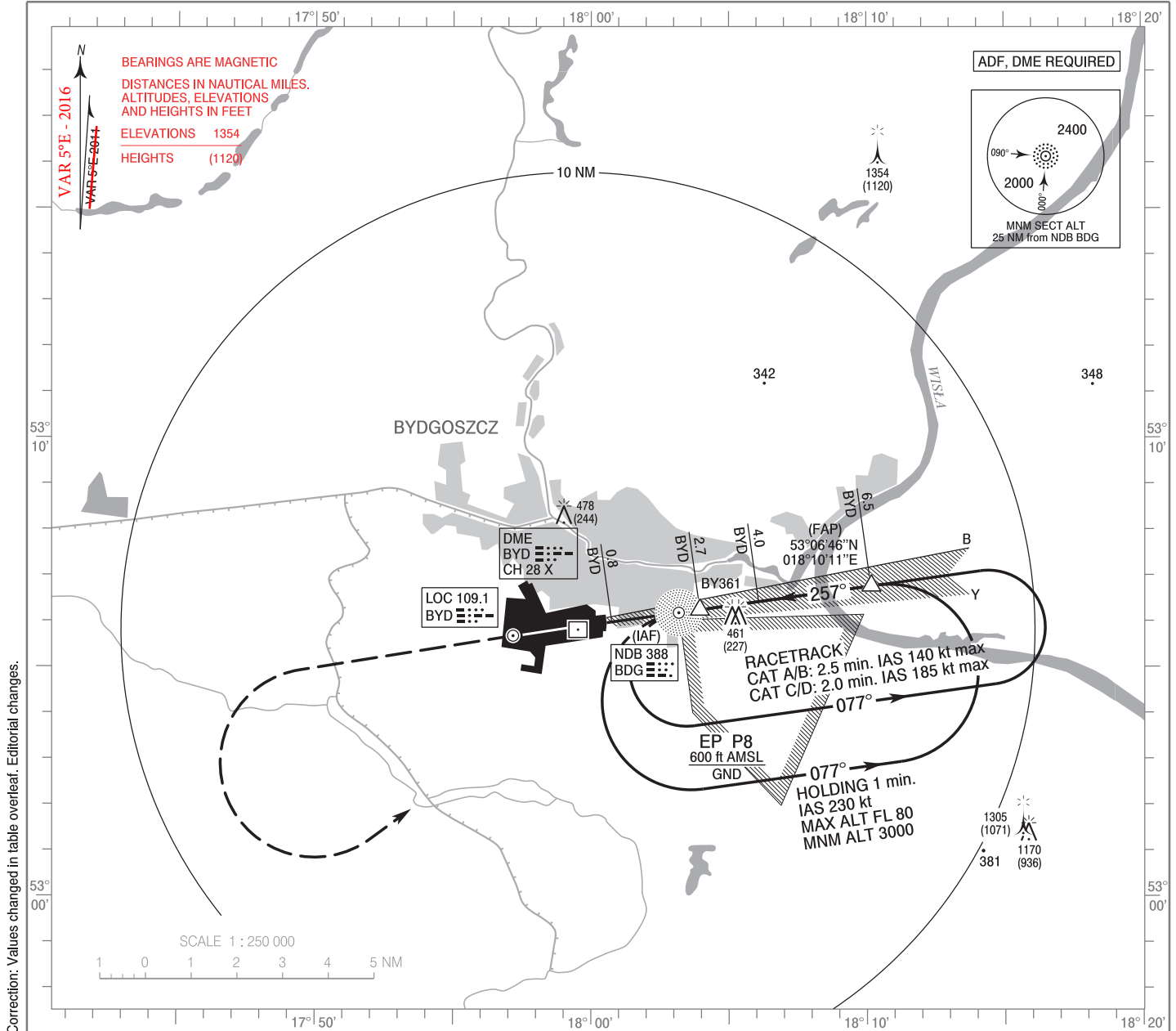


**INSTRUMENT
APPROACH
CHART - ICAO**

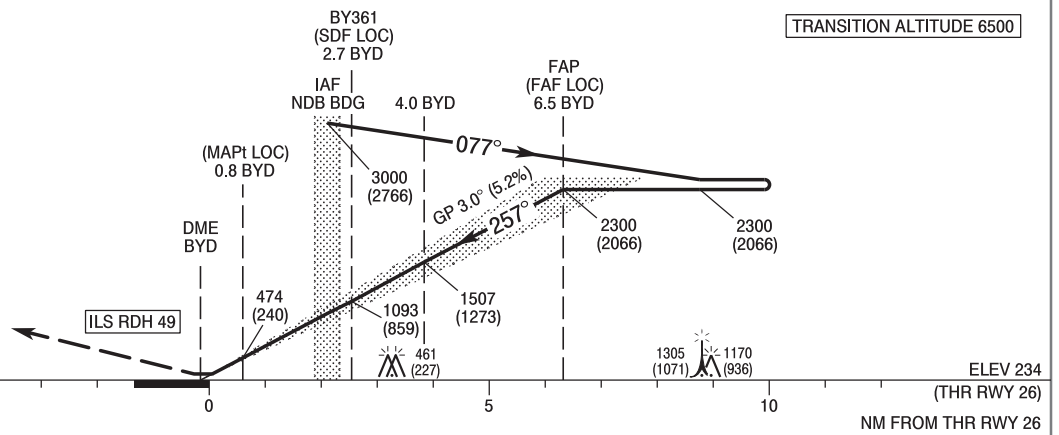
AERODROME ELEV 236 ft
THR RWY 26 ELEV 234 ft
HEIGHTS RELATED TO THR RWY 26

TWR 131.000

**BYDGOSZCZ / Szvederowo
ILS x or LOC x
RWY 26 (CAT A/B/C/D)**



MISSED APPROACH
Climb straight ahead to 1500 (1266)
then turn left to NDB BDG
climbing to 2300 (2066).
Further instructions from ATC.
Turn limited to 185 kt max.



		OCA (OCH)				Distance FAF - MAPt 5.7 NM							
Cat. of ACFT	Cat. I LOC	A	B	C	D	Speed	kt	80	100	120	140	160	180
		Straight-in		429 (195)	441 (207)	449 (215)	460 (226)	Time	min : s	4 : 16	3 : 25	2 : 51	2 : 26
	600 (366)		600 (366)	600 (366)	600 (366)	Rate of descent	ft / min	430	540	640	750	850	960
		When stepdown fix not received				Final approach distance/altitude (height)							
		710 (476)	710 (476)	710 (476)	710 (476)	Distance		5	4	3	2		
Circling (OCH AAL)		720 (484)	780 (544)	880 (644)	930 (694)	Altitude (height)		1830 (1596)	1510 (1276)	1190 (956)	870 (636)		

**INSTRUMENT
APPROACH
CHART - ICAO**

BYDGOSZCZ / Szwederowo
ILS x or LOC x
RWY 26 (CAT A/B/C/D)

FIX / POINT	LATITUDE	LONGITUDE	FIX FORMATION	
IAF NDB BDG	53°06'11.1"N	018°03'11.1"E		
FAP (FAF LOC)	53°06'46.1"N	018°10'10.8"E	262.20° GEO (257° MAG) LOC BYD	6.49 NM DME BYD
BY361 (SDF LOC)	53°06'15.0"N	018°03'56.9"E	262.13° GEO (257° MAG) LOC BYD	2.70 NM DME BYD
MAPt (LOC)	53°05'59.0"N	018°00'45.0"E	262.08° GEO (257° MAG) LOC BYD	0.76 NM DME BYD
Final approach descent angle: 3.00°				