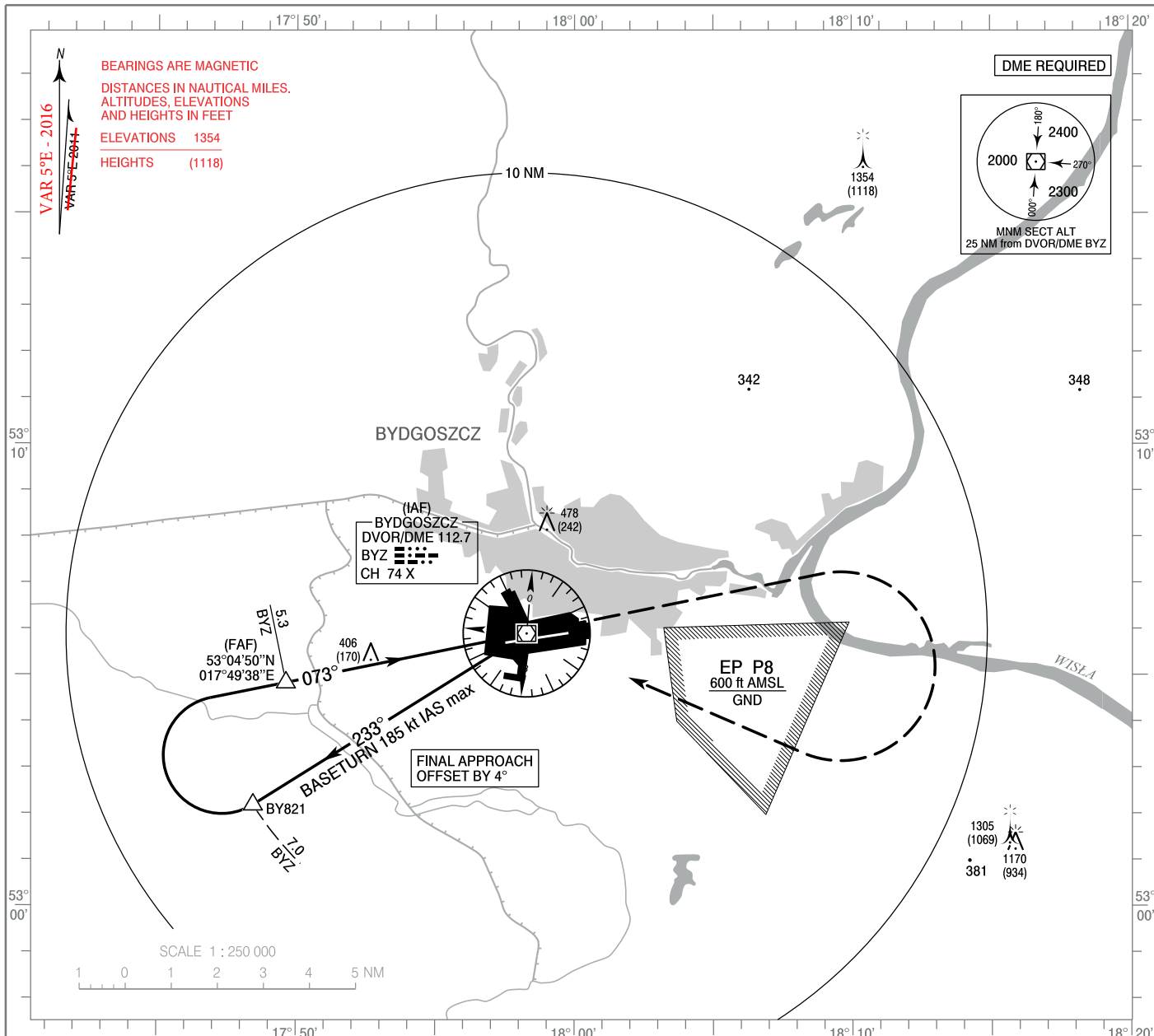


**INSTRUMENT
APPROACH
CHART - ICAO**

AERODROME ELEV 236 ft
THR RWY 08 ELEV 236 ft
HEIGHTS RELATED TO AD ELEV

TWR 131.000

**BYDGOSZCZ / Szwederowo
VOR y
RWY 08 (CAT A/B/C/D)**

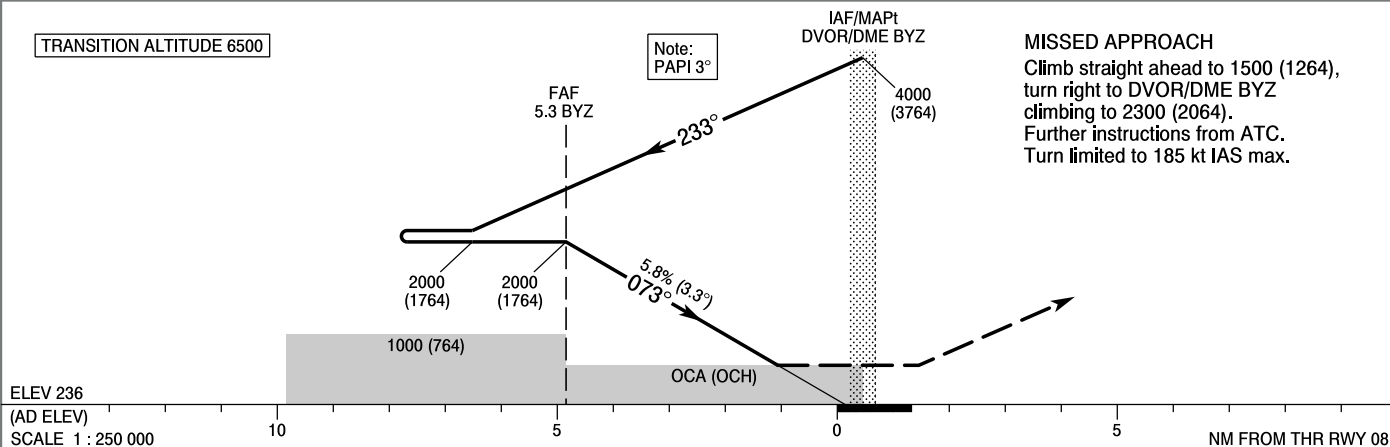


Correction: Note on PAPI. Editorial changes.

TRANSITION ALTITUDE 6500

Note:
PAPI 3°

MISSED APPROACH
Climb straight ahead to 1500 (1264),
turn right to DVOR/DME BYZ
climbing to 2300 (2064).
Further instructions from ATC.
Turn limited to 185 kt IAS max.



ELEV 236

(AD ELEV)

SCALE 1 : 250 000

NM FROM THR RWY 08

OCA (OCH)					Distance FAF - MAPt 5.3 NM							
Cat. of ACFT	A	B	C	D	Speed	kt	80	100	120	140	160	180
	Straight - in	660 (424)	660 (424)	660 (424)	660 (424)	Time	min : s	4 : 40	3 : 12	2 : 40	2 : 17	2 : 00
					Rate of descent	ft / min	470	590	710	830	940	1060
					Final approach distance/altitude (height)							
Circling	720 (484)	780 (544)	880 (644)	930 (694)	Distance		5	4	3	2		
					Altitude (height)		1880 (1644)	1530 (1294)	1180 (944)	830 (594)		

**INSTRUMENT
APPROACH
CHART - ICAO**

**BYDGOSZCZ / Szwederowo
VOR y
RWY 08 (CAT A/B/C/D)**

FIX / POINT	LATITUDE	LONGITUDE	FIX FORMATION	
IAF DVOR/DME BYZ	53°05'54.3"N	017°58'18.2"E		
BY821	53°02'11.3"N	017°48'27.6"E	237.98° GEO (233° MAG) DVOR BYZ	7.00 NM DME BYZ
FAF	53°04'50.2"N	017°49'37.7"E	258.50° GEO (253° MAG) DVOR BYZ	5.34 NM DME BYZ
MAPt DVOR/DME BYZ	53°05'54.3"N	017°58'18.2"E		
Final approach descent angle: 3.32°				