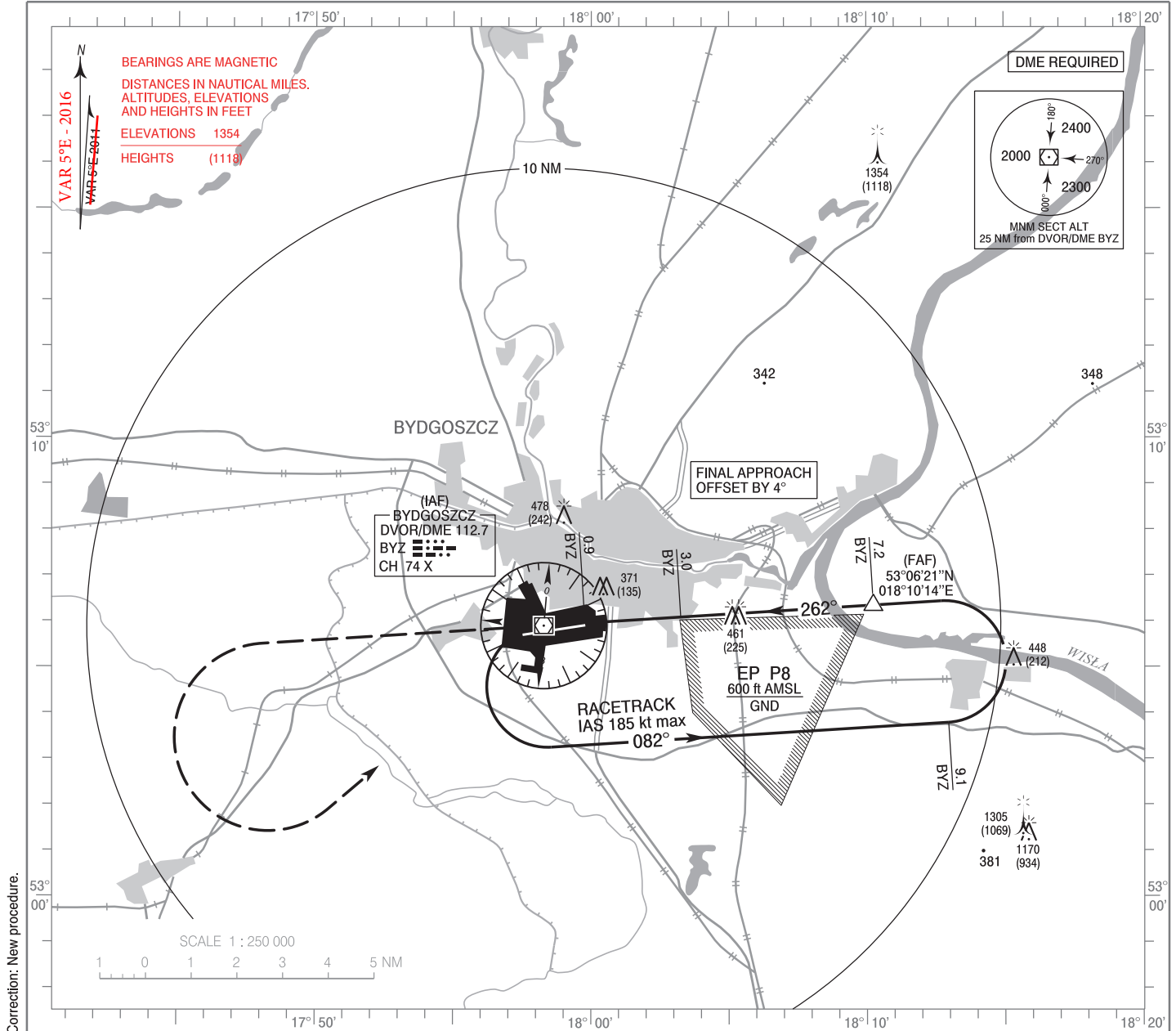


**INSTRUMENT
APPROACH
CHART - ICAO**

AERODROME ELEV 236 ft
THR RWY 26 ELEV 234 ft
HEIGHTS RELATED TO AD ELEV

TWR 131.000

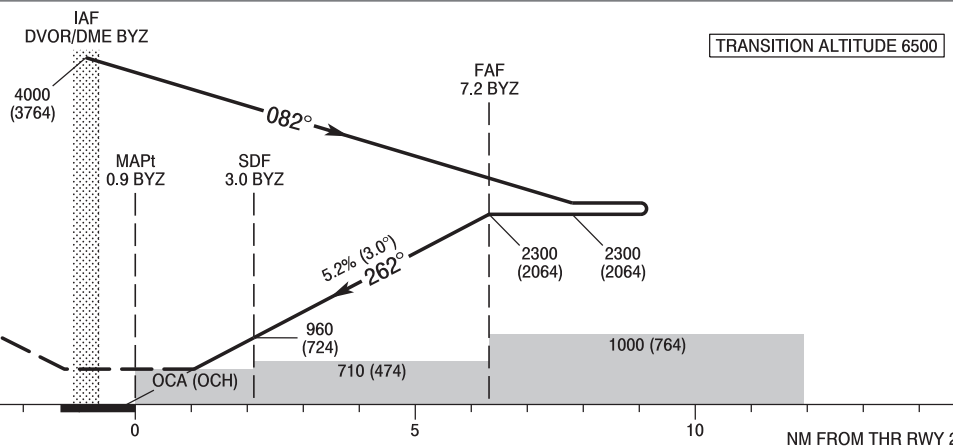
**BYDGOSZCZ / Szwederowo
VOR
RWY 26 (CAT A/B/C/D)**



Correction: New procedure.

MISSED APPROACH

Climb straight ahead to 1500 (1264),
turn left to DVOR/DME BYZ
climbing to 2300 (2064).
Further instructions from ATC.
Turn limited to 185 kt IAS max.



ELEV 236

(AD ELEV)

SCALE 1 : 250 000

OCA (OCH)					Distance FAF - MAPt 6.3 NM							
Cat. of ACFT	A	B	C	D	Speed	kt	80	100	120	140	160	180
Straight - in	620 (384)	620 (384)	620 (384)	620 (384)	Time	min : s	4 : 45	3 : 48	3 : 10	2 : 43	2 : 22	2 : 07
	When stepdown fix not received				Rate of descent	ft / min	430	540	640	750	850	960
	710 (474)	710 (474)	710 (474)	710 (474)	Final approach distance/altitude (height)							
Circling	720 (484)	780 (544)	880 (644)	930 (694)	Distance		6	5	4	3		
					Altitude (height)		1920 (1684)	1600 (1364)	1280 (1044)	960 (724)		

**INSTRUMENT
APPROACH
CHART - ICAO**

**BYDGOSZCZ / Szwederowo
VOR
RWY 26 (CAT A/B/C/D)**

FIX / POINT	LATITUDE	LONGITUDE	FIX FORMATION	
IAF DVOR/DME BYZ	53°05'54.3"N	017°58'18.2"E		
FAF	53°06'20.8"N	018°10'14.2"E	086.39° GEO (081° MAG) DVOR BYZ	7.21 NM DME BYZ
SDF	53°06'05.4"N	018°03'15.4"E	086.40° GEO (081° MAG) DVOR BYZ	3.00 NM DME BYZ
MAPt	53°05'57.5"N	017°59'45.8"E	086.45° GEO (081° MAG) DVOR BYZ	0.88 NM DME BYZ
Final approach descent angle: 3.00°				