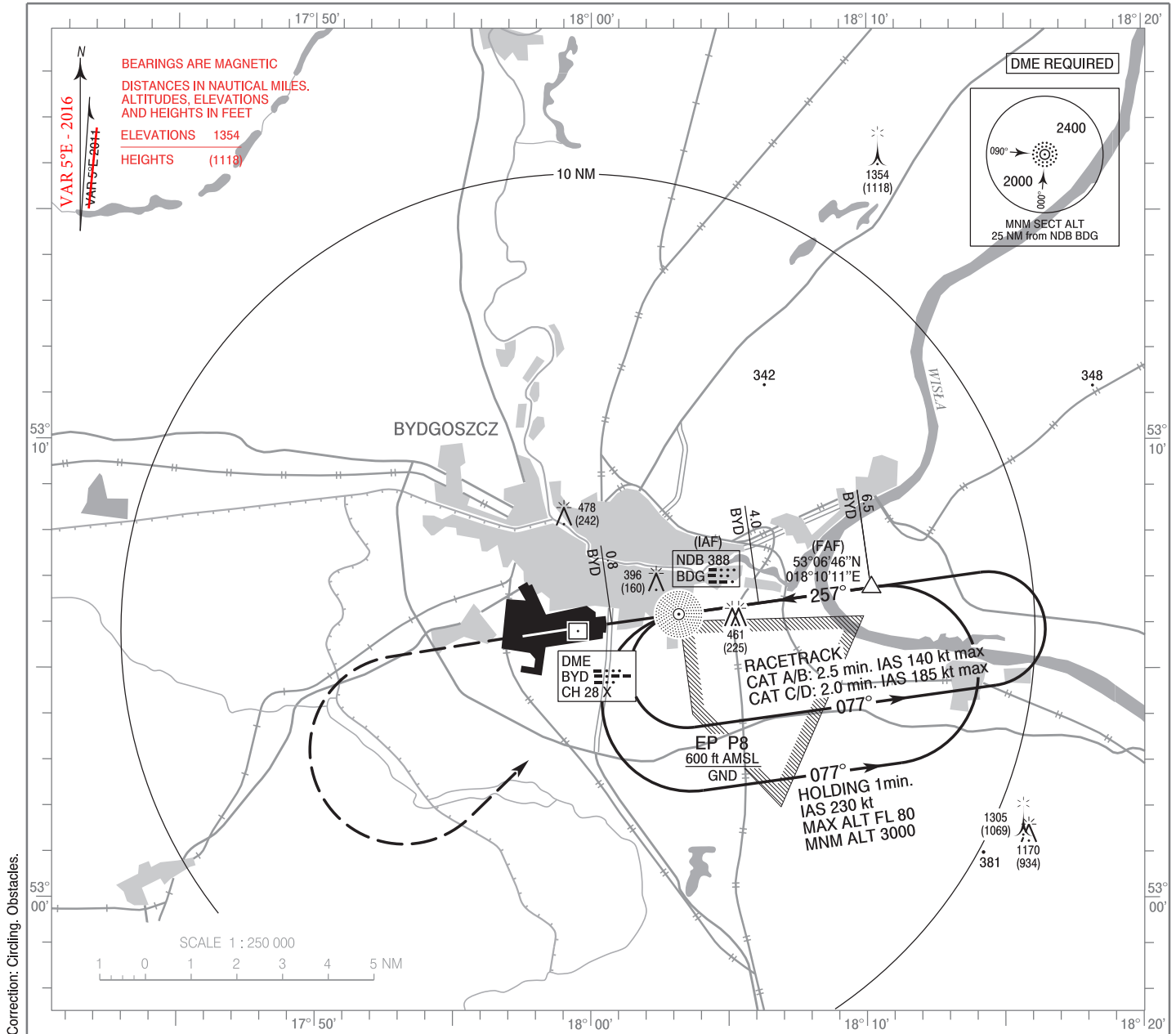


**INSTRUMENT  
APPROACH  
CHART - ICAO**

AERODROME ELEV 236 ft  
THR RWY 26 ELEV 234 ft  
HEIGHTS RELATED TO AD ELEV

TWR 131.000

**BYDGOSZCZ / Szwederowo  
NDB z  
RWY 26 (CAT A/B/C/D)**

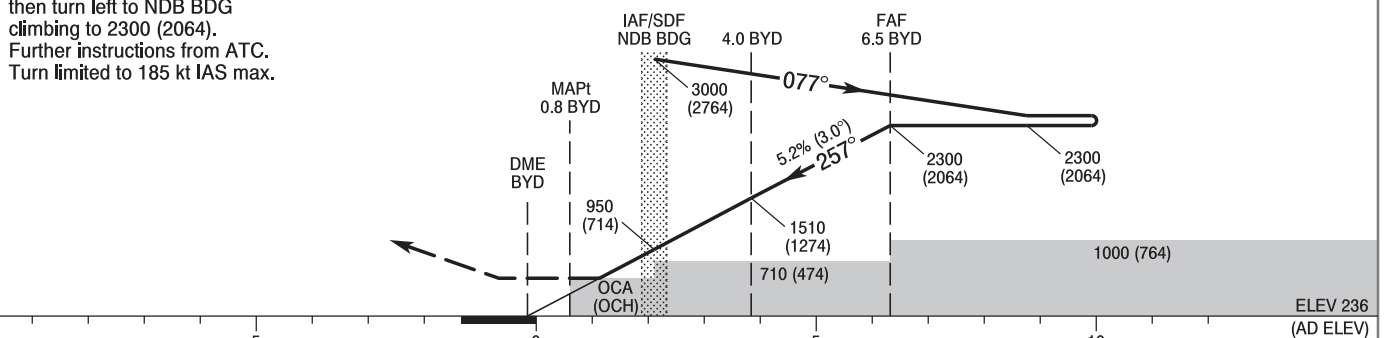


Correction: Circling. Obstacles.

**MISSED APPROACH**

Climb straight ahead to 1500 (1264)  
then turn left to NDB BDG  
climbing to 2300 (2064).  
Further instructions from ATC.  
Turn limited to 185 kt IAS max.

TRANSITION ALTITUDE 6500



SCALE 1 : 250 000

NM FROM THR RWY 26

OCA (OCH)					Distance FAF - MAPt 5.7 NM							
Cat. of ACFT	A	B	C	D	Speed	kt	80	100	120	140	160	180
	Straight - in	650 (414)	650 (414)	650 (414)	650 (414)	Time	min : s	4 : 16	3 : 25	2 : 51	2 : 26	2 : 08
When stepdown fix not received				Rate of descent	ft / min	430	540	640	750	850	960	
Circling	720 (484)	780 (544)	880 (644)	930 (694)	Final approach distance/altitude (height)							
					Distance		5	4	3	2		
				Altitude (height)		1830 (1594)	1510 (1274)	1190 (954)	870 (634)			

**INSTRUMENT  
APPROACH  
CHART - ICAO**

**BYDGOSZCZ / Szwederowo  
NDB z  
RWY 26 (CAT A/B/C/D)**

FIX / POINT	LATITUDE	LONGITUDE	FIX FORMATION	
IAF/SDF NDB BDG	53°06'11.1"N	018°03'11.1"E		
FAF (NDB-DME)	53°06'46.1"N	018°10'10.8"E	082.08° GEO (077° MAG) NDB BDG	6.49 NM DME BYD
MAPt	53°05'59.0"N	018°00'45.0"E	262.17° GEO (257° MAG) NDB BDG	0.76 NM DME BYD
Final approach descent angle: 3.00°				