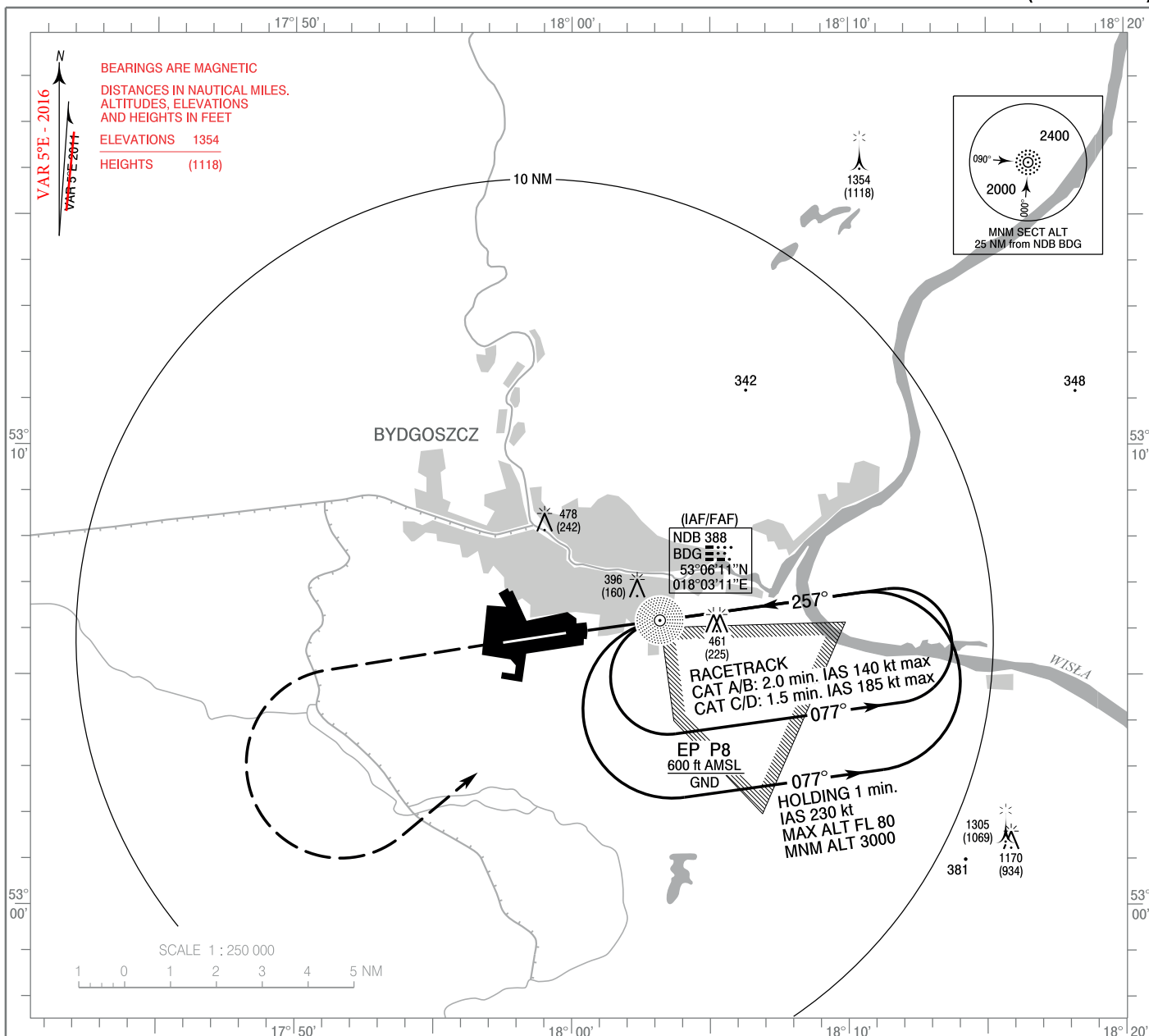


**INSTRUMENT
APPROACH
CHART - ICAO**

AERODROME ELEV 236 ft
THR RWY 26 ELEV 234 ft
HEIGHTS RELATED TO AD ELEV

TWR 131.000

**BYDGOSZCZ / Szwederowo
NDB y
RWY 26 (CAT A/B/C/D)**



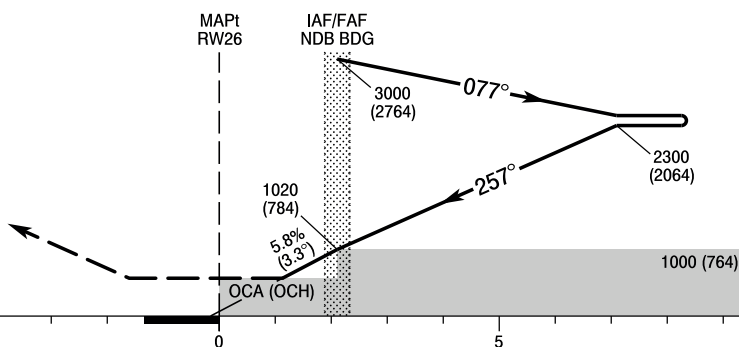
Correction: Note on PAPI. Editorial changes.

MISSED APPROACH

Climb straight ahead to 1500 (1264)
then turn left to NDB BDG
climbing to 2300 (2064).
Further instructions from ATC.
Turn limited to 185 kt IAS max.

Note:
PAPI 3°

TRANSITION ALTITUDE 6500



SCALE 1 : 250 000

NM FROM THR RWY 26

OCA (OCH)					Distance FAF - MAPt 2.1 NM							
Cat. of ACFT	A	B	C	D	Speed	kt	80	100	120	140	160	180
	Straight - in	620 (384)	620 (384)	620 (384)	620 (384)	Time	min : s	1 : 34	1 : 15	1 : 02	0 : 53	0 : 47
					Rate of descent	ft / min	480	600	710	830	950	1070
Circling	720 (484)	780 (544)	880 (644)	930 (694)								

**INSTRUMENT
APPROACH
CHART - ICAO**

**BYDGOSZCZ / Szwederowo
NDB y
RWY 26 (CAT A/B/C/D)**

FIX / POINT	LATITUDE	LONGITUDE	FIX FORMATION	
IAF/FAF NDB BDG	53°06'11.1"N	018°03'11.1"E		
MAPt RW26	53°05'54.1"N	017°59'46.2"E		
Final approach descent angle: 3.33°				