

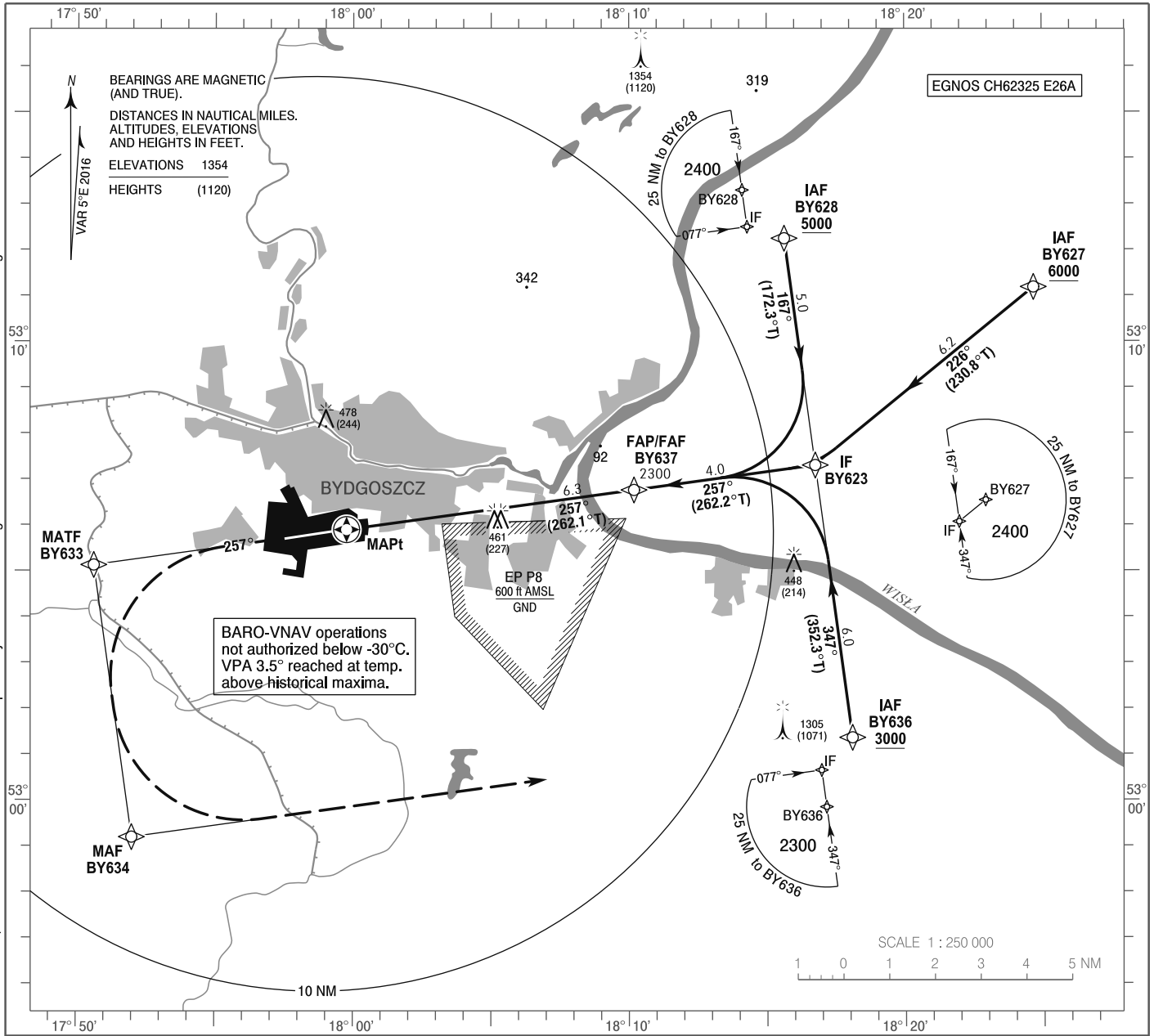
**INSTRUMENT
APPROACH
CHART - ICAO**

AERODROME ELEV 236 ft
THR RWY 26 ELEV 234 ft
HEIGHTS RELATED TO THR RWY 26

Bydgoszcz TOWER 131.000

**Bydgoszcz - Szvederowo
RNAV (GNSS)
RWY 26 (CAT A/B/C/D)**

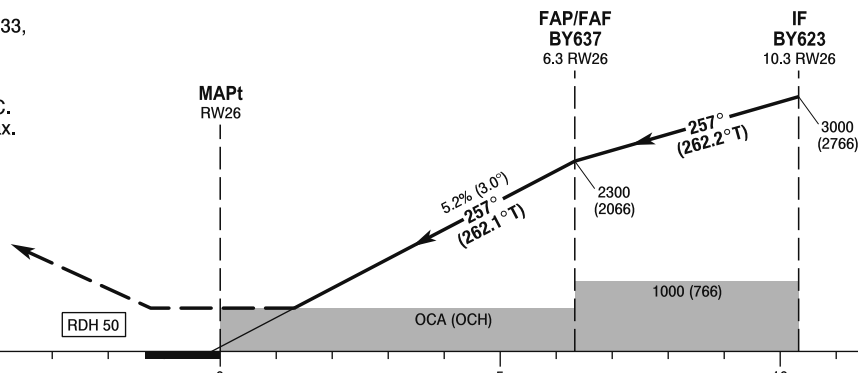
Correction: LNAV/VNAV and LPV minima added. MSA replaced by TAA. MA, Initial segments, NDB BDG withdrawn. Obstacles. Heights related to THR 26.



MISSED APPROACH

Climb on course 257° to BY633, then turn left to BY634, then turn left to BY636 climbing to 3000 (2766). Further instructions from ATC. Turn limited to 220 kt IAS max.

TRANSITION ALTITUDE 6500



SCALE 1 : 250 000

NM FROM THR RWY 26

OCA (OCH)					Distance FAF - MAPt 6.3								
Cat. of ACFT		A	B	C	D	Speed	kt	80	100	120	140	160	180
		Straight - in	LNAV	710 (476)	710 (476)	710 (476)	710 (476)	Time	min : s	4 : 46	3 : 49	3 : 11	2 : 43
LNAV / VNAV	470 (236)		480 (246)	490 (256)	500 (266)	Rate of descent	ft / min	420	530	630	740	840	950
LPV	434 (200)		446 (212)	454 (220)	465 (231)		Final approach distance/altitude (height)						
Circling (OCH AAL)		710 (474)	780 (544)	880 (644)	930 (694)	Distance		5	4	3	2		
						Altitude (height)		1880 (1646)	1560 (1326)	1240 (1006)	930 (696)		