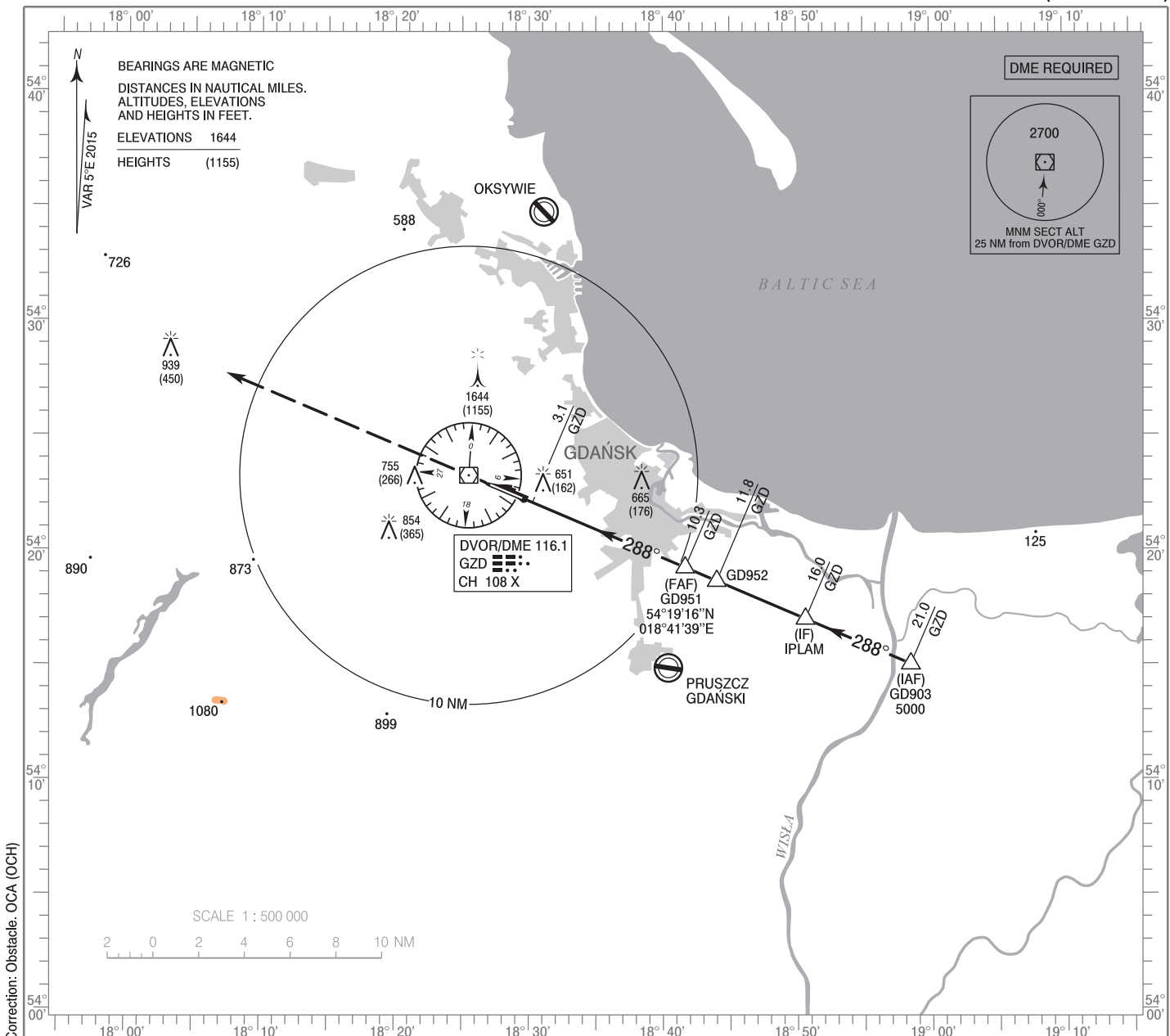


**INSTRUMENT
APPROACH
CHART - ICAO**

AERODROME ELEV 489 ft
THR RWY 29 ELEV 488 ft
HEIGHTS RELATED TO AD ELEV

Gdańsk DIRECTOR 119.650
Gdańsk APPROACH 127.275
Gdańsk TOWER 118.100
ATIS 129.625

**GDĄŃSK Lech Wałęsa
VOR
RWY 29 (CAT A/B/C/D)**



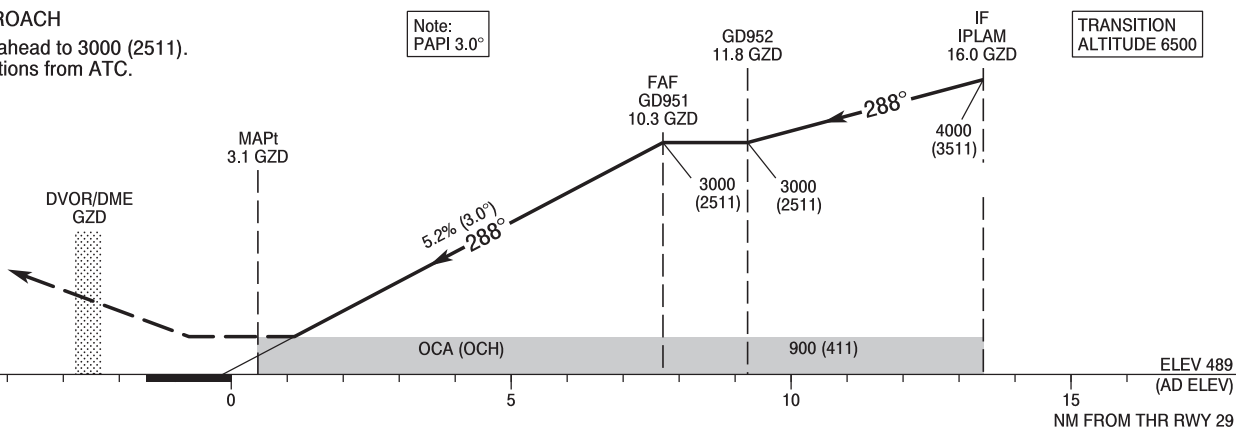
Correction: Obstacle: OCA (OCH)

MISSED APPROACH

Climb straight ahead to 3000 (2511).
Further instructions from ATC.

Note: PAPI 3.0°

TRANSITION ALTITUDE 6500



ELEV 489 (AD ELEV) NM FROM THR RWY 29

Cat. of ACFT	OCA (OCH)				Distance FAF - MAPt 7.2 NM							
	A	B	C	D	Speed	kt	80	100	120	140	160	180
Straight - in	900 (411)	900 (411)	900 (411)	900 (411)	Time	min : s	5 : 24	4 : 19	3 : 36	3 : 05	2 : 42	2 : 24
					Rate of descent	ft / min	430	530	640	740	850	950
					Final approach distance/altitude (height)							
Circling*	960 (471)	990 (501)	1160 (671)	1250 (761)	Distance		8	7	6	5		
					Altitude (height)		2280 (1791)	1960 (1471)	1650 (1161)	1330 (841)		

*ACFT cat. D circling south of aerodrome only.

INSTRUMENT
APPROACH
CHART - ICAOGDAŃSK / Lech Walesa
VOR
RWY 29 (CAT A/B/C/D)

FIX / POINT	LATITUDE	LONGITUDE	FIX FORMATION	
IAF GD903	54°15'02.5"N	018°58'26.7"E	112.92° GEO (108° MAG) DVOR GZD	20.98 NM DME GZD
IF REP IPLAM	54°17'00.8"N	018°50'37.0"E	112.93° GEO (108° MAG) DVOR GZD	15.98 NM DME GZD
GD952	54°18'40.2"N	018°44'00.7"E	112.93° GEO (108° MAG) DVOR GZD	11.77 NM DME GZD
FAF GD951	54°19'15.6"N	018°41'39.5"E	112.93° GEO (108° MAG) DVOR GZD	10.27 NM DME GZD
MAPt	54°22'04.4"N	018°30'20.9"E	112.93° GEO (108° MAG) DVOR GZD	3.07 NM DME GZD
Final approach descent angle: 3.00°				