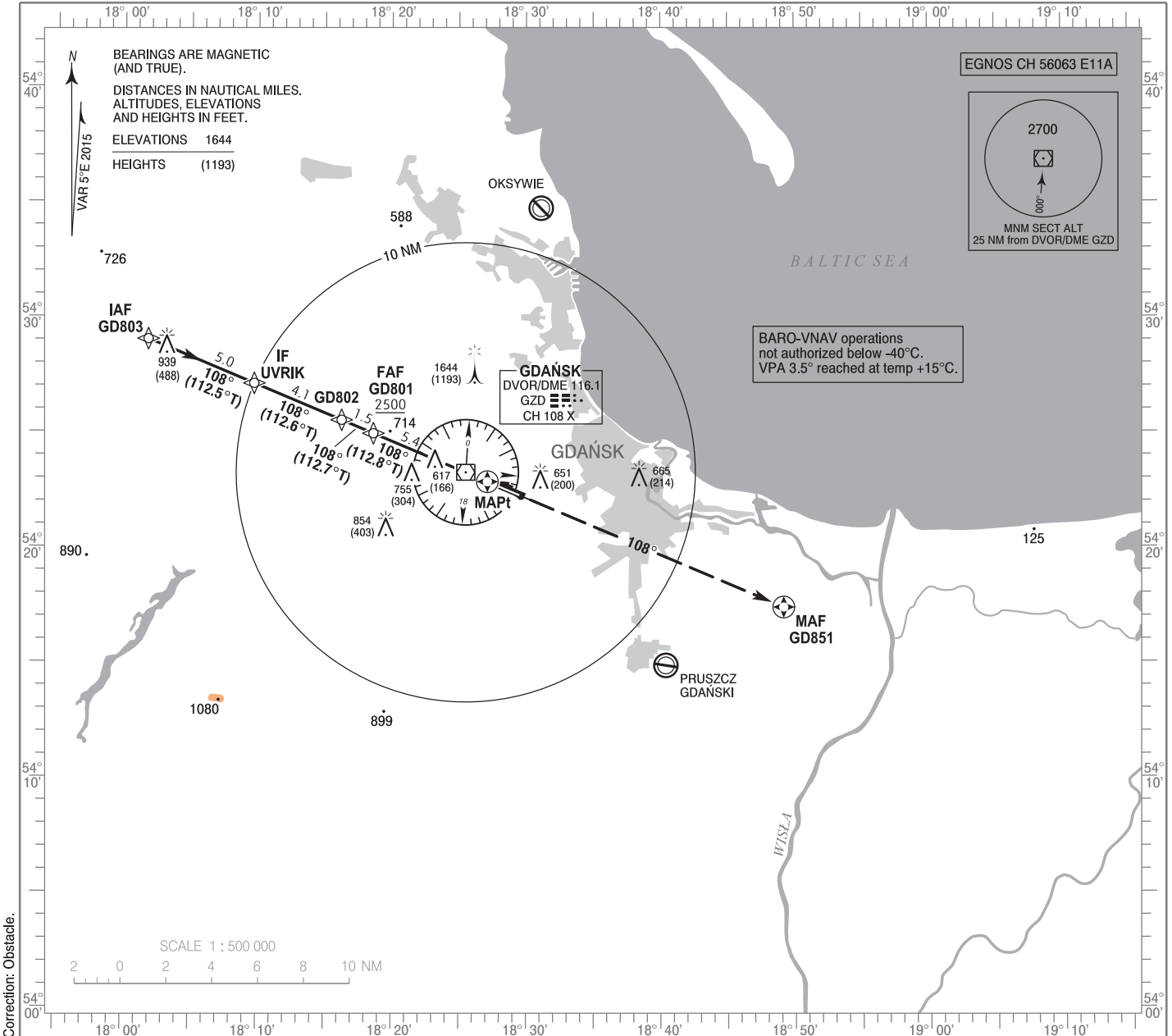


**INSTRUMENT  
APPROACH  
CHART - ICAO**

AERODROME ELEV 489 ft  
THR RWY 11 ELEV 451 ft  
HEIGHTS RELATED TO THR RWY 11

Gdańsk DIRECTOR 119.650  
Gdańsk APPROACH 127.275  
Gdańsk TOWER 118.100  
ATIS 129.625

**GDĄŃSK Lech Wałęsa**  
**RNAV (GNSS)**  
**RWY 11 (CAT A/B/C/D)**

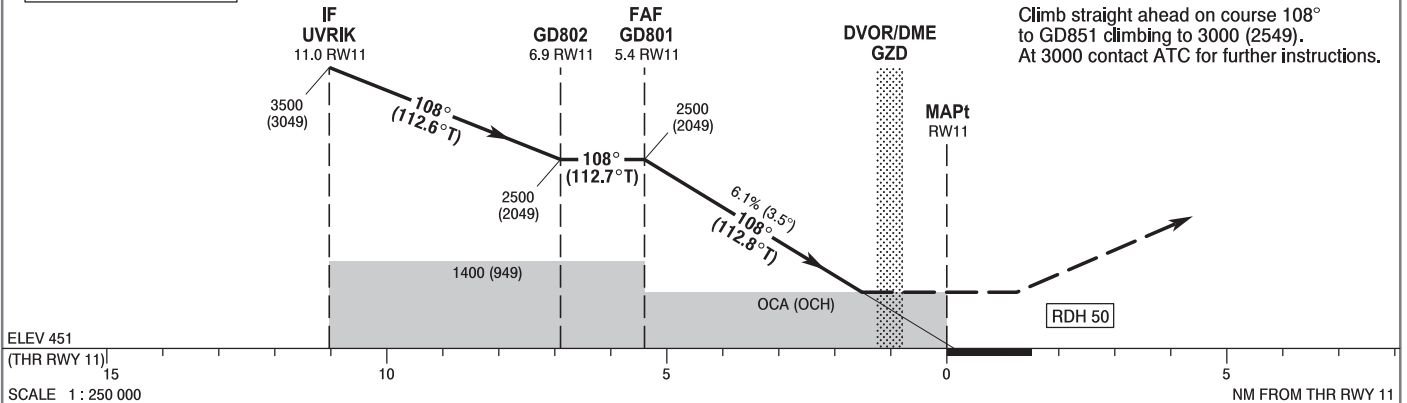


Correction: Obstacle.

TRANSITION ALTITUDE 6500

**MISSED APPROACH**

Climb straight ahead on course 108° to GD851 climbing to 3000 (2549).  
At 3000 contact ATC for further instructions.



ELEV 451 (THR RWY 11) 15 10 5 0 5 NM FROM THR RWY 11

OCA (OCH)					Distance FAF - MAPt 5.4 NM								
Cat. of ACFT	A	B	C	D	Speed	kt	80	100	120	140	160	180	
Straight - in	LNAV	1060 (609)	1060 (609)	1060 (609)	1060 (609)	Time	min : s	4 : 03	3 : 14	2 : 42	2 : 19	2 : 01	1 : 48
	LNAV / VNAV	740 (289)	750 (299)	760 (309)	770 (319)	Rate of descent	ft / min	500	620	750	870	990	1120
	LPV	727 (276)	741 (290)	751 (300)	764 (313)		Final approach distance/altitude (height)						
Circling (OCH AAL)*	1060 (571)	1060 (571)	1160 (671)	1250 (761)	Distance	5	4	3	2				
*ACFT cat. D circling south of aerodrome only.					Altitude (height)	2360 (1909)	1990 (1539)	1620 (1169)	1250 (799)				