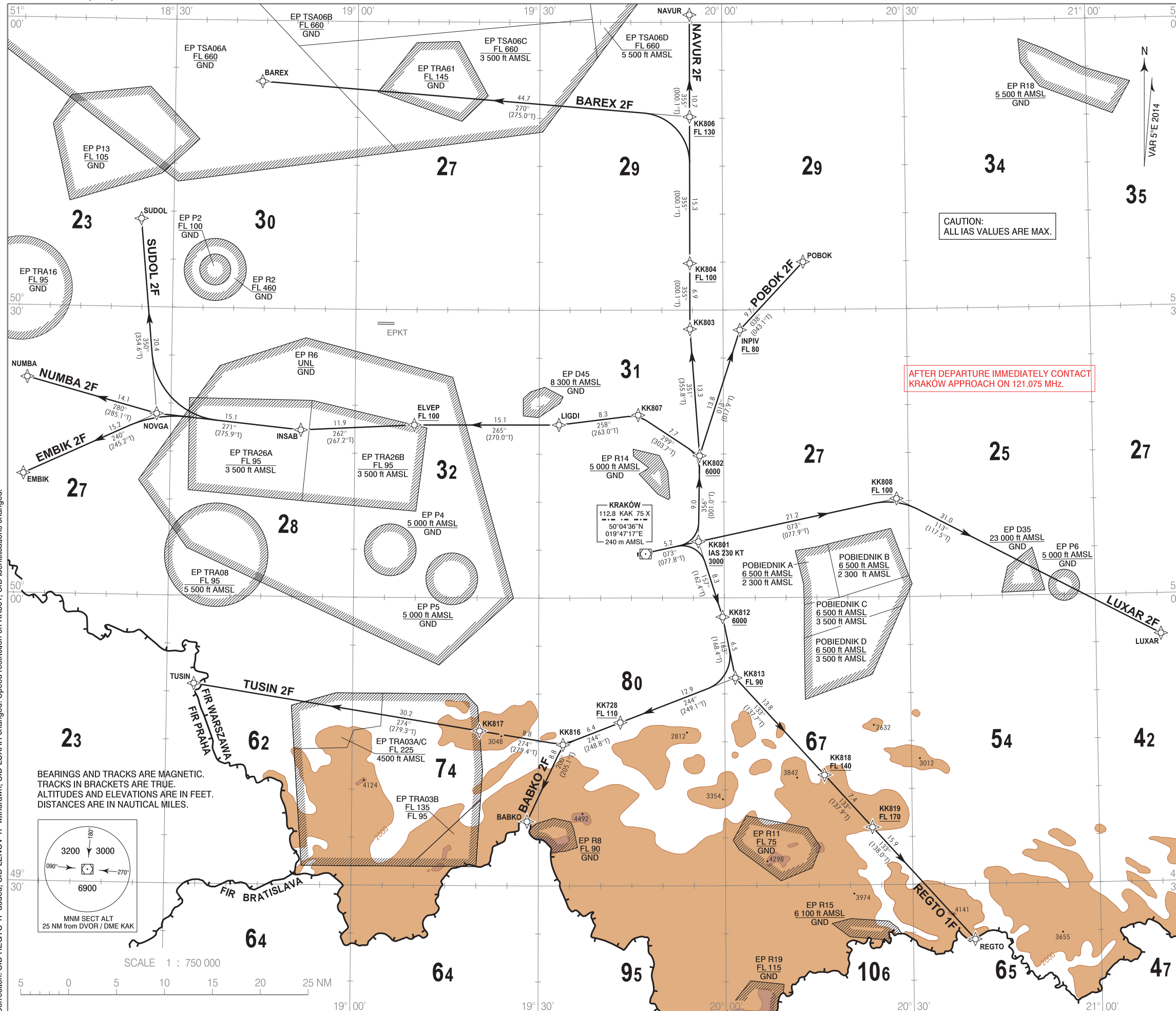


**RNAV 1 (GNSS)
STANDARD DEPARTURE CHART
INSTRUMENT (SID) - ICAO**

TRANSITION ALTITUDE 6500

Kraków DIRECTOR	126.525	Kraków GROUND	118.100
Kraków APPROACH	121.075, 135.400	Kraków TOWER	123.250
Kraków DELIVERY	121.975		

**Kraków - Balice
RWY 07**



CAUTION:
ALL IAS VALUES ARE MAX.

AFTER DEPARTURE IMMEDIATELY CONTACT
KRAKÓW APPROACH ON 121.075 MHz.

1. RNAV 1 approval required to conduct these procedures without additional restrictions. However it is possible to utilize RNAV 1 trajectories by RNAV 5 only approved aircraft. The following restriction applies: aircraft equipped with RNAV 5 systems without navigation database and requiring manual data input are exempted from the utilization of RNAV 1 procedures.
2. All aircraft which can not follow and utilize RNAV 1 procedures shall advise ATC before start up. Radar vectoring will be provided, usually along published procedures.
3. Expect direct routing/shortcuts by ATC whenever possible.
4. MAX IAS during initial turn as indicated in route description.
5. Initial SID climb: climb and maintain 6000 unless otherwise cleared by ATC.
6. Aircraft unable to achieve SID profile restrictions must request non-standard departure from ATC before start up.

RADIO COMMUNICATION FAILURE PROCEDURE

- SET TRANSPONDER TO 7600
- a) Continue on assigned and acknowledged SID. After 3 minutes climb to FPL flight level.
 - b) If being vectored, continue on assigned heading for 3 minutes, then proceed direct to last SID WPT climbing to FPL flight level.

Correction: SID REGTO 1F added, SID LENOV 1F withdrawn, SID LUXAR changed. Speed restriction on KK801, SID identifications changed.