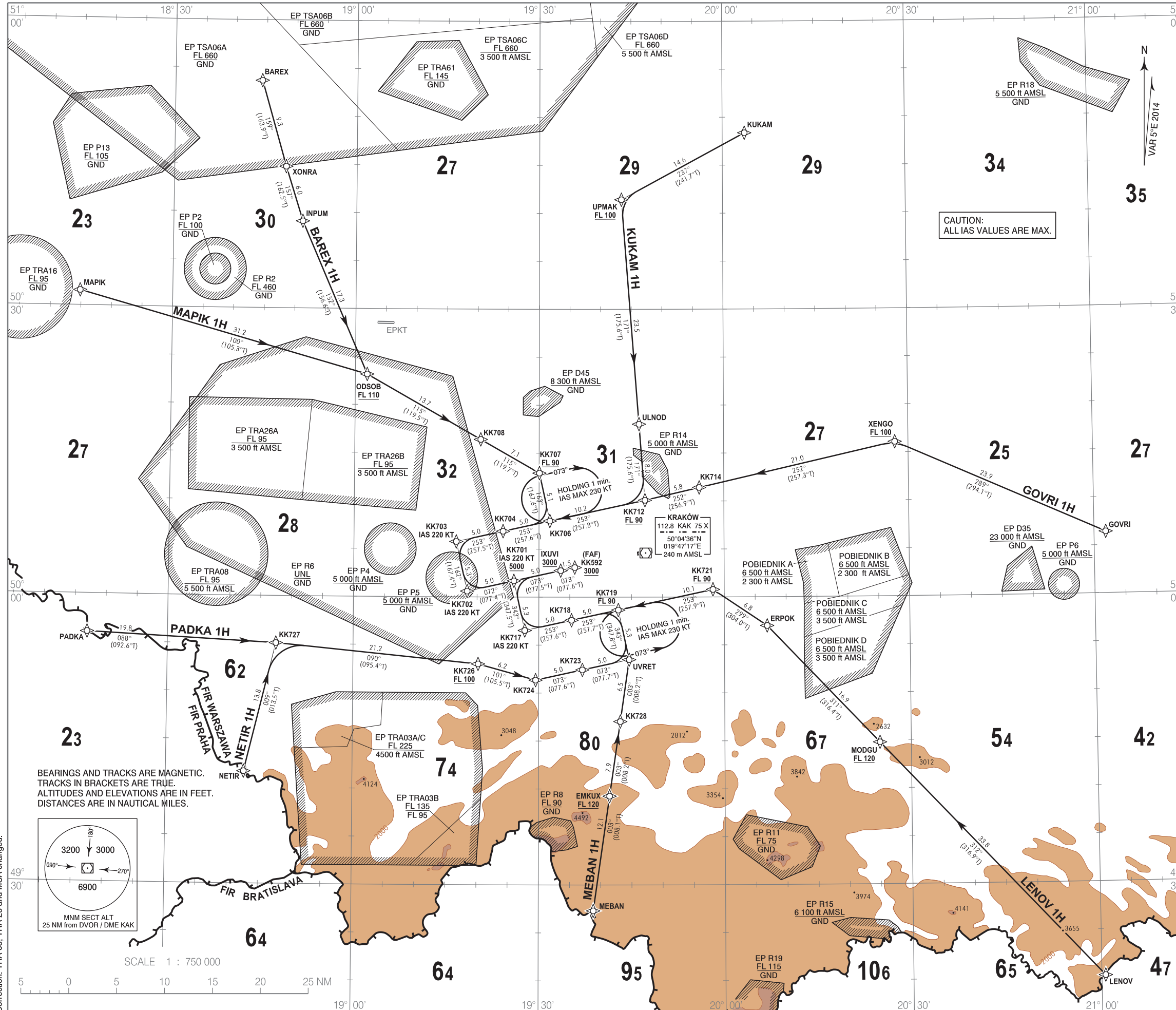


**RNAV 1 (GNSS)
STANDARD ARRIVAL CHART
INSTRUMENT (STAR) - ICAO**

TRANSITION ALTITUDE 6500

Kraków DIRECTOR 126.525 Kraków TOWER 123.250
Kraków APPROACH 121.075, 135.400
Kraków GROUND 118.100

**Kraków - Balice
RWY 07**



CAUTION:
ALL IAS VALUES ARE MAX.

1. RNAV 1 approval required to conduct these procedures without additional restrictions. However it is possible to utilize RNAV 1 trajectories by RNAV 5 only approved aircraft. The following restriction applies: aircraft equipped with RNAV 5 systems without navigation database and requiring manual data input are exempted from the utilization of RNAV 1 procedures.
2. All aircraft which can not follow and utilize RNAV 1 trajectories shall advise ATC upon first contact. Radar vectoring will be provided, usually along published procedures.
3. Holding patterns as directed by ATC, available for non RNAV 1 approved aircraft.
4. Expect direct routing/shortcuts by ATC whenever possible, the turn to final approach may be performed by radar vectors to expedite traffic handling and for separation reasons.
5. REP IXUVI is a tactical fix for non-standard shorter approach.

RADIO COMMUNICATION FAILURE PROCEDURE

- RNAV 1 APPROVED AIRCRAFT:
- a) If STAR was assigned and acknowledged by air crew, set transponder to 7600, continue with FPL and assigned STAR. Descending shall be executed in accordance with vertical restrictions specified on chart to IAF altitude (VOR, GNSS) after 3 min. from setting 7600. Then execute the approach.
 - b) If STAR was assigned and acknowledged by air crew and vectoring was initiated, set transponder to 7600 and continue on previously assigned heading and last cleared and acknowledged altitude for 3 min. from setting 7600. Then proceed direct to closest STAR WPT and continue with assigned STAR to IAF altitude (VOR, GNSS) and execute the approach. Descending shall be executed in accordance with vertical restrictions specified on chart.
 - c) If STAR was not assigned, set transponder to 7600, proceed according to FPL and FPL STAR, execute approach (VOR, GNSS) and land. Descending shall be executed in accordance with vertical restrictions specified on chart after 3 min. from setting 7600. If landing is not possible, execute missed approach and proceed to FAF of most convenient RWY.

- RNAV 1 NOT APPROVED AIRCRAFT:
- Set transponder to 7600 - if vectoring was initiated - continue on previously assigned heading for 3 min. Then proceed to FAF RWY 07 descending to 3000 ft altitude, execute approach and land. If landing is not possible, execute missed approach and proceed FAP/FAF of most convenient RWY, then execute approach and land.

Correction: TRA 03, TRA 26 and MSA changed.