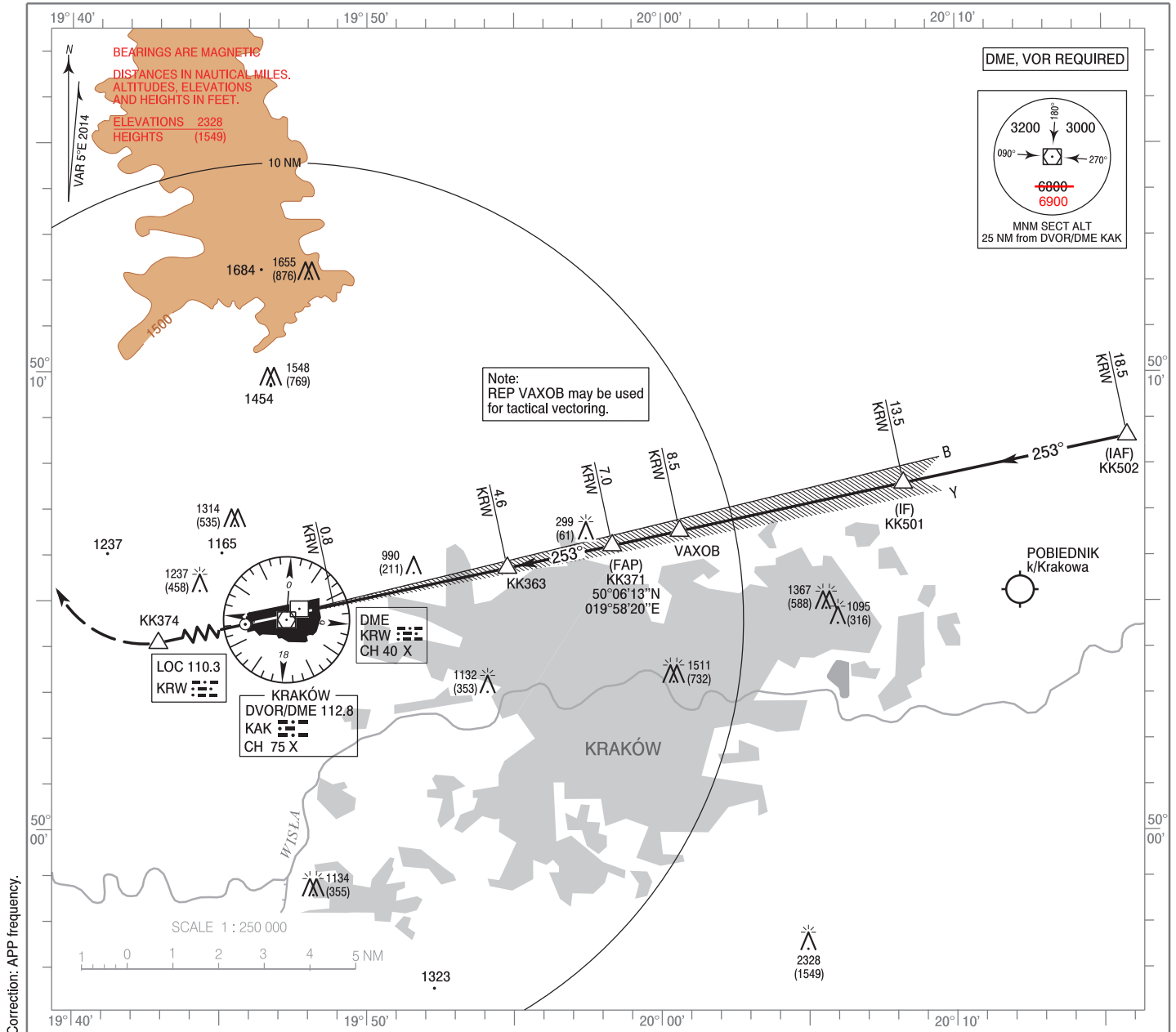


**INSTRUMENT  
APPROACH  
CHART - ICAO**

AERODROME ELEV 791 ft  
THR RWY 25 ELEV 779 ft  
HEIGHTS RELATED TO THR RWY 25

APP 121.075  
135.400  
ATIS 126.125  
TWR 123.250

**KRAKÓW / Balice  
ILS or LOC  
RWY 25 (CAT A/B/C/D)**

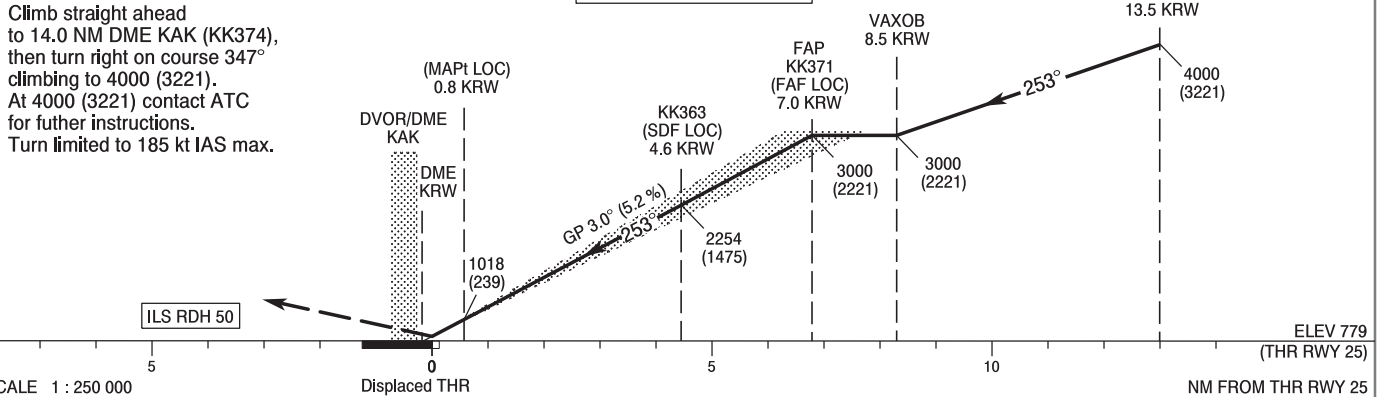


Correction: APP frequency.

**MISSED APPROACH**

Climb straight ahead to 14.0 NM DME KAK (KK374), then turn right on course 347° climbing to 4000 (3221). At 4000 (3221) contact ATC for further instructions. Turn limited to 185 kt IAS max.

TRANSITION ALTITUDE 6500



OCA (OCH)					Distance FAF - MAPt 6.2 NM							
Cat. of ACFT	A	B	C	D	Speed	kt						
					Time	80	100	120	140	160	180	
Straight - in	LOC	977 (198)	989 (210)	997 (218)	1008 (229)	min : s	4 : 40	3 : 44	3 : 07	2 : 40	2 : 20	2 : 05
		When stepdown fix not received				Rate of descent	ft / min					
		1250 (471)	1250 (471)	1250 (471)	1250 (471)		430	530	640	750	850	960
		1280 (501)	1280 (501)	1280 (501)	1280 (501)	Final approach distance/altitude (height)						
Circling (OCH AAL)*		1560 (769)	1620 (829)	1730 (939)	1950 (1159)	Distance	6	5	4	3	2	
						Altitude (height)	2690 (1911)	2380 (1610)	2060 (1281)	1740 (961)	1420 (641)	

INSTRUMENT  
APPROACH  
CHART - ICAOKRAKÓW / Balice  
ILS or LOC  
RWY 25 (CAT A/B/C/D)

FIX / POINT	LATITUDE	LONGITUDE	FIX FORMATION	
IAF KK502	50°08'35.9"N	020°15'49.3"E	077.78° GEO (073° MAG) LOC KRW	18.48 NM DME KRW
IF KK501	50°07'34.2"N	020°08'13.0"E	077.78° GEO (073° MAG) LOC KRW	13.48 NM DME KRW
REP VAXOB	50°06'31.9"N	020°00'37.0"E	077.78° GEO (073° MAG) LOC KRW	8.48 NM DME KRW
FAP KK371 (FAF LOC)	50°06'13.2"N	019°58'19.8"E	077.77° GEO (073° MAG) LOC KRW	6.98 NM DME KRW
KK363 (SDF LOC)	50°05'43.8"N	019°54'46.2"E	077.76° GEO (073° MAG) LOC KRW	4.63 NM DME KRW
MAPt (LOC)	50°04'54.7"N	019°48'52.6"E	077.76° GEO (073° MAG) LOC KRW	0.75 NM DME KRW
KK374	50°01'41.6"N	019°26'05.3"E	258.14° GEO (253° MAG) DVOR KAK	13.96 NM DME KAK
Final approach descent angle: 3.00°				