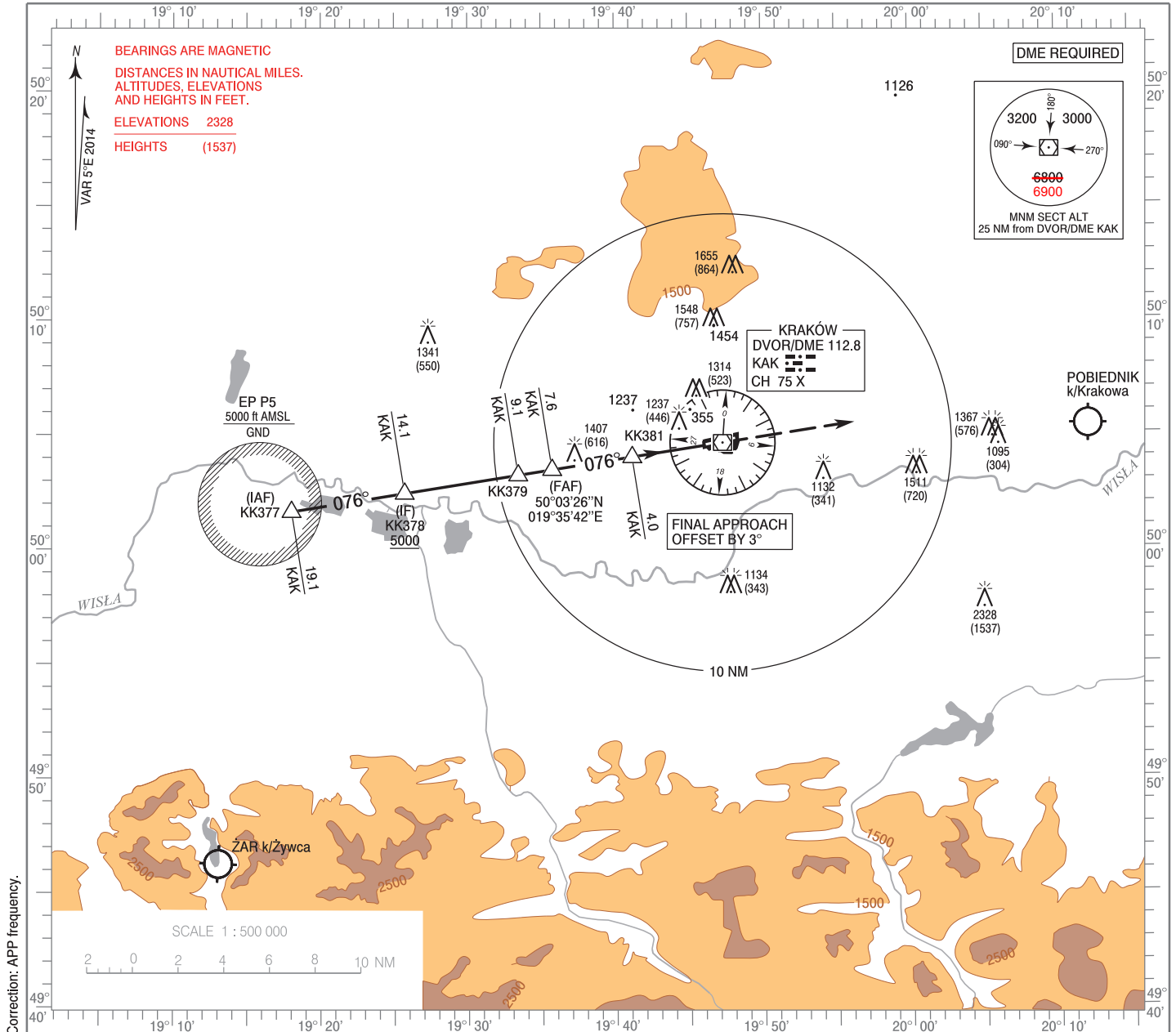


**INSTRUMENT
APPROACH
CHART - ICAO**

AERODROME ELEV 791 ft
THR RWY 07 ELEV 791 ft
HEIGHTS RELATED TO AD ELEV

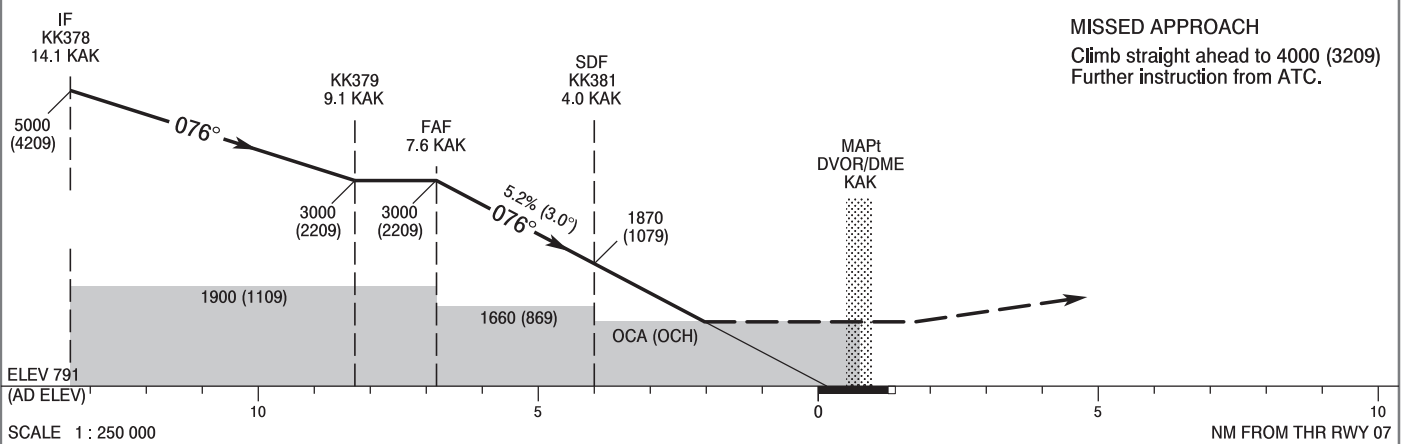
APP 121.075
135.400
ATIS 126.125
TWR 123.250

**KRAKÓW / Balice
VOR
RWY 07 (CAT A/B/C/D)**



Correction: APP frequency.

MISSED APPROACH
Climb straight ahead to 4000 (3209)
Further instruction from ATC.



OCA (OCH)					Distance FAF - MAPt 7.5 NM							
Cat. of ACFT	A	B	C	D	Speed	kt	80	100	120	140	160	180
Straight - in	1490 (699)	1490 (699)	1490 (699)	1490 (699)	Time	min : s	5 : 40	4 : 32	3 : 46	3 : 14	2 : 50	2 : 31
	When stepdown fix not received				Rate of descent	ft/min	430	530	640	740	850	950
Circling*	1660 (869)	1660 (869)	1730 (939)	1950 (1159)	Final approach distance/altitude (height)							
					Distance	6	5	4	3	2		
					Altitude (height)	2510 (1719)	2190 (1399)	1870 (1079)	1560 (769)	1240 (449)		

*Circling north of aerodrome only.

INSTRUMENT
APPROACH
CHART - ICAOKRAKÓW / Balice
VOR
RWY 07 (CAT A/B/C/D)

FIX / POINT	LATITUDE	LONGITUDE	FIX FORMATION	
IAF KK377	50°01'37.8"N	019°18'01.8"E	261.25° GEO (256° MAG) DVOR KAK	19.08 NM DME KAK
IF KK378	50°02'25.2"N	019°25'42.2"E	261.25° GEO (256° MAG) DVOR KAK	14.07 NM DME KAK
KK379	50°03'12.3"N	019°33'24.4"E	261.26° GEO (256° MAG) DVOR KAK	9.05 NM DME KAK
FAF	50°03'26.3"N	019°35'42.5"E	261.26° GEO (256° MAG) DVOR KAK	7.55 NM DME KAK
SDF KK381	50°03'58.8"N	019°41'08.7"E	261.21° GEO (256° MAG) DVOR KAK	4.00 NM DME KAK
MAPt DVOR/DME KAK	50°04'35.6"N	019°47'16.8"E		
Final approach descent angle: 3.00°				