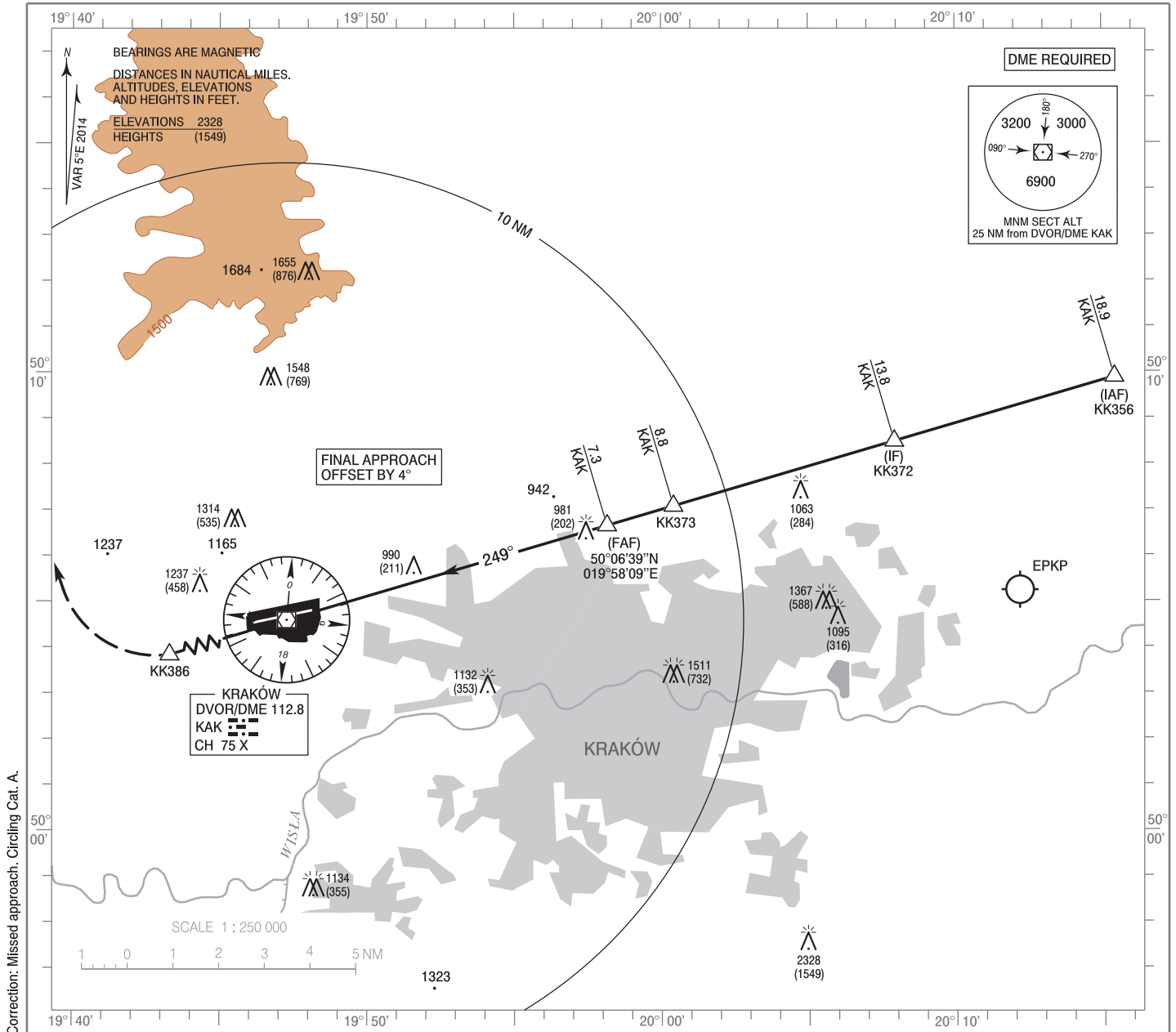


**INSTRUMENT
APPROACH
CHART - ICAO**

AERODROME ELEV 791 ft
THR RWY 25 ELEV 779 ft
HEIGHTS RELATED TO THR RWY 25

Kraków APPROACH 121.075, 135.400
ATIS 126.125
Kraków TOWER 123.250

**Kraków - Balice
VOR
RWY 25 (CAT A/B/C/D)**

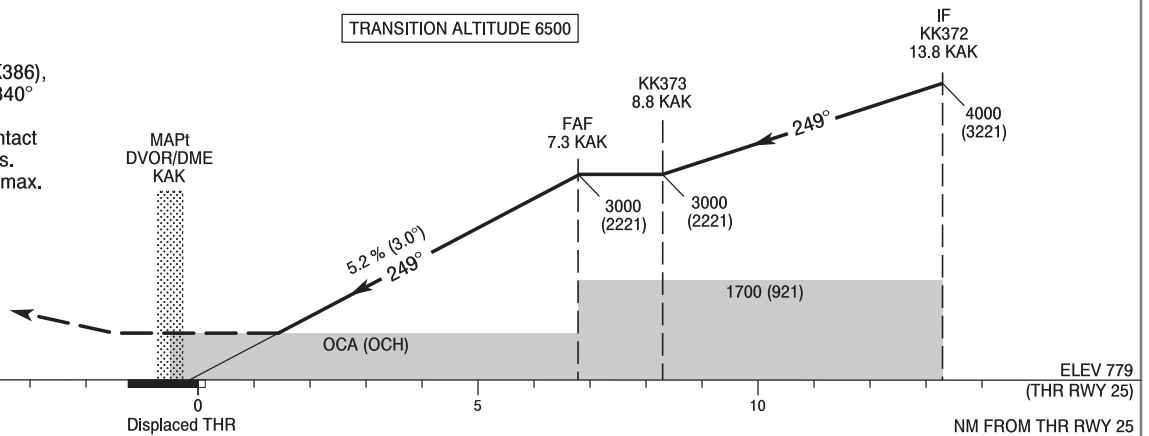


Correction: Missed approach. Circling Cat. A.

MISSED APPROACH

Climb straight ahead to 11.8 NM DME KAK (KK386), then turn right on course 340° climbing to 4000 (3221). Reaching 4000 (3221) contact ATC for further instructions. Turn limited to 220 kt IAS max.

TRANSITION ALTITUDE 6500



OCA (OCH)					Distance FAF - MAPt 7.3 NM							
Cat. of ACFT	A	B	C	D	Speed	kt	80	100	120	140	160	180
Straight - in	1290 (511)	1290 (511)	1290 (511)	1290 (511)	Time	min : s	5 : 28	4 : 23	3 : 39	3 : 08	2 : 44	2 : 26
					Rate of descent	ft / min	430	530	640	740	850	950
					Final approach distance/altitude (height)							
Circling (OCH AAL)*	1560 (769)	1620 (829)	1730 (939)	1950 (1159)	Distance	6	5	4	3	2		
*Circling north of aerodrome only.					Altitude (height)	2590 (1811)	2270 (1491)	1950 (1171)	1630 (851)	1320 (531)		

**INSTRUMENT
APPROACH
CHART - ICAO**

**Kraków - Balice
VOR
RWY 25 (CAT A/B/C/D)**

FIX / POINT	LATITUDE	LONGITUDE	FIX FORMATION	
IAF KK356	50°09'53.0"N	020°15'24.1"E	073.51° GEO (069° MAG) DVOR KAK	18.86 NM DME KAK
IF KK372	50°08'29.3"N	020°07'54.8"E	073.51° GEO (069° MAG) DVOR KAK	13.84 NM DME KAK
KK373	50°07'04.8"N	020°00'24.4"E	073.51° GEO (069° MAG) DVOR KAK	8.81 NM DME KAK
FAF	50°06'39.2"N	019°58'09.2"E	073.52° GEO (069° MAG) DVOR KAK	7.30 NM DME KAK
MAPt DVOR/DME KAK	50°04'35.6"N	019°47'16.8"E		
KK386	50°01'13.3"N	019°29'44.3"E	253.50° GEO (249° MAG) DVOR KAK	11.80 NM DME KAK
Final approach descent angle: 3.00°				