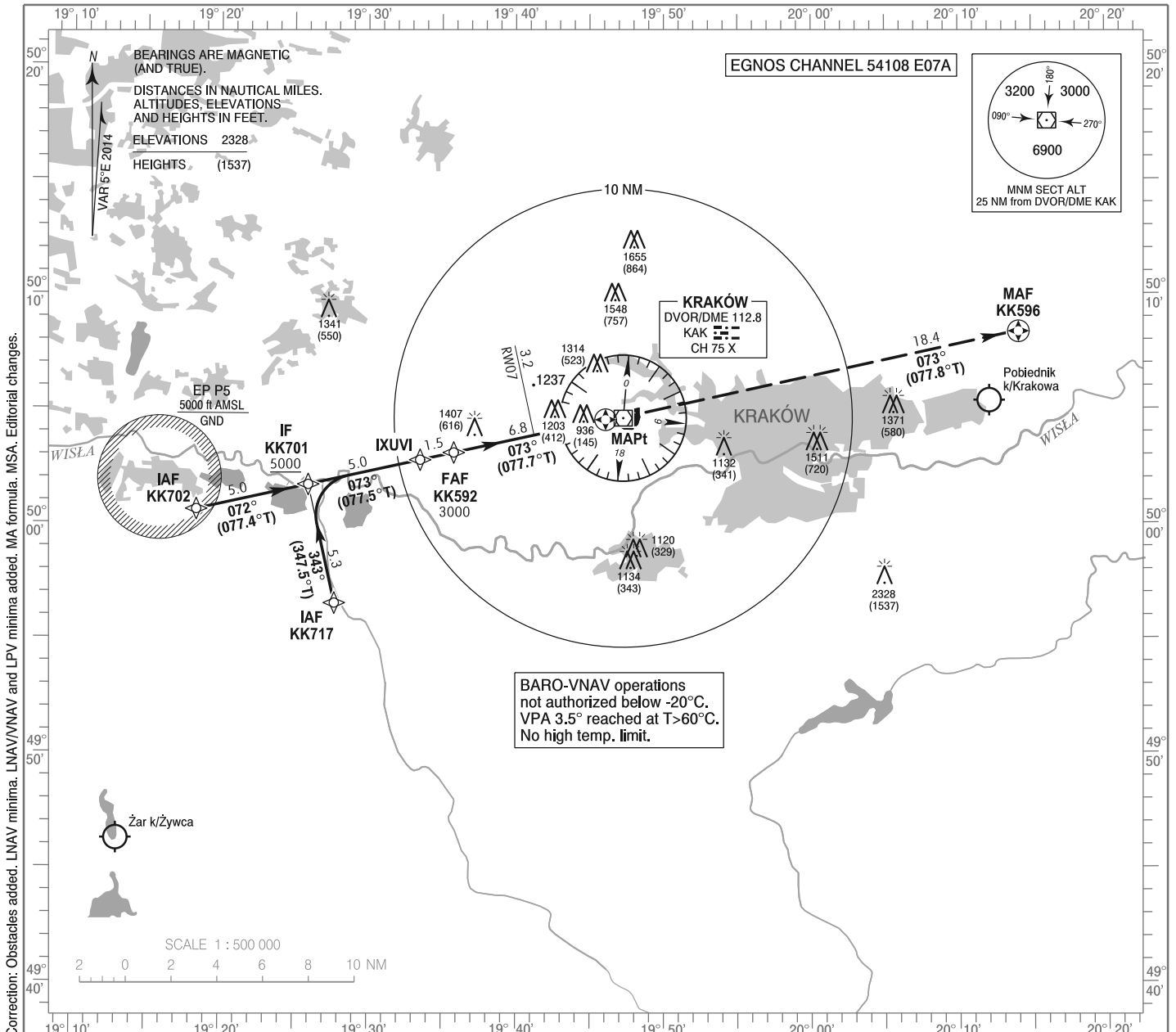


**INSTRUMENT
APPROACH
CHART - ICAO**

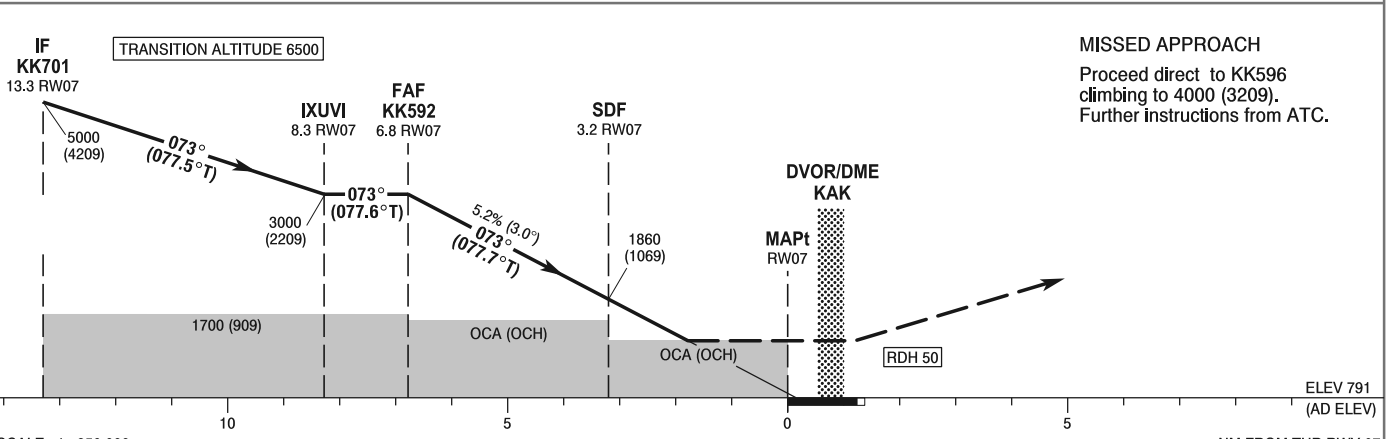
AERODROME ELEV 791 ft
THR RWY 07 ELEV 791 ft
HEIGHTS RELATED TO AD ELEV

Kraków APPROACH 121.075, 135.400
Kraków TOWER 123.250
ATIS 126.125

**Kraków - Balice
RNAV (GNSS)
RWY 07 (CAT A/B/C/D)**



Correction: Obstacles added. LNAV/VNAV and LPV minima. LNAV/VNAV and LPV minima added. MA formula. MSA. Editorial changes.



OCA (OCH)					Distance FAF - MAPt 6.8 NM								
Cat. of ACFT		A	B	C	D	Speed	kt	80	100	120	140	160	180
		Straight - in	LNAV	1410 (619)	1410 (619)	1410 (619)	1410 (619)	Time	min : s	5 : 05	4 : 04	3 : 23	2 : 54
When stepdown fix not received				Rate of descent	ft / min	430	530	640	740	850	960		
LNAV / VNAV	1310 (519)		1310 (519)	1320 (529)	1330 (539)	Final approach distance/altitude (height)							
LPV	1066 (275)		1078 (287)	1086 (295)	1097 (306)	Distance		6	5	4	3		
Circling (north of aerodrome only)		1630 (839)	1630 (839)	1730 (939)	1950 (1159)	Altitude (height)		2760 (1969)	2440 (1649)	2120 (1329)	1800 (1009)		