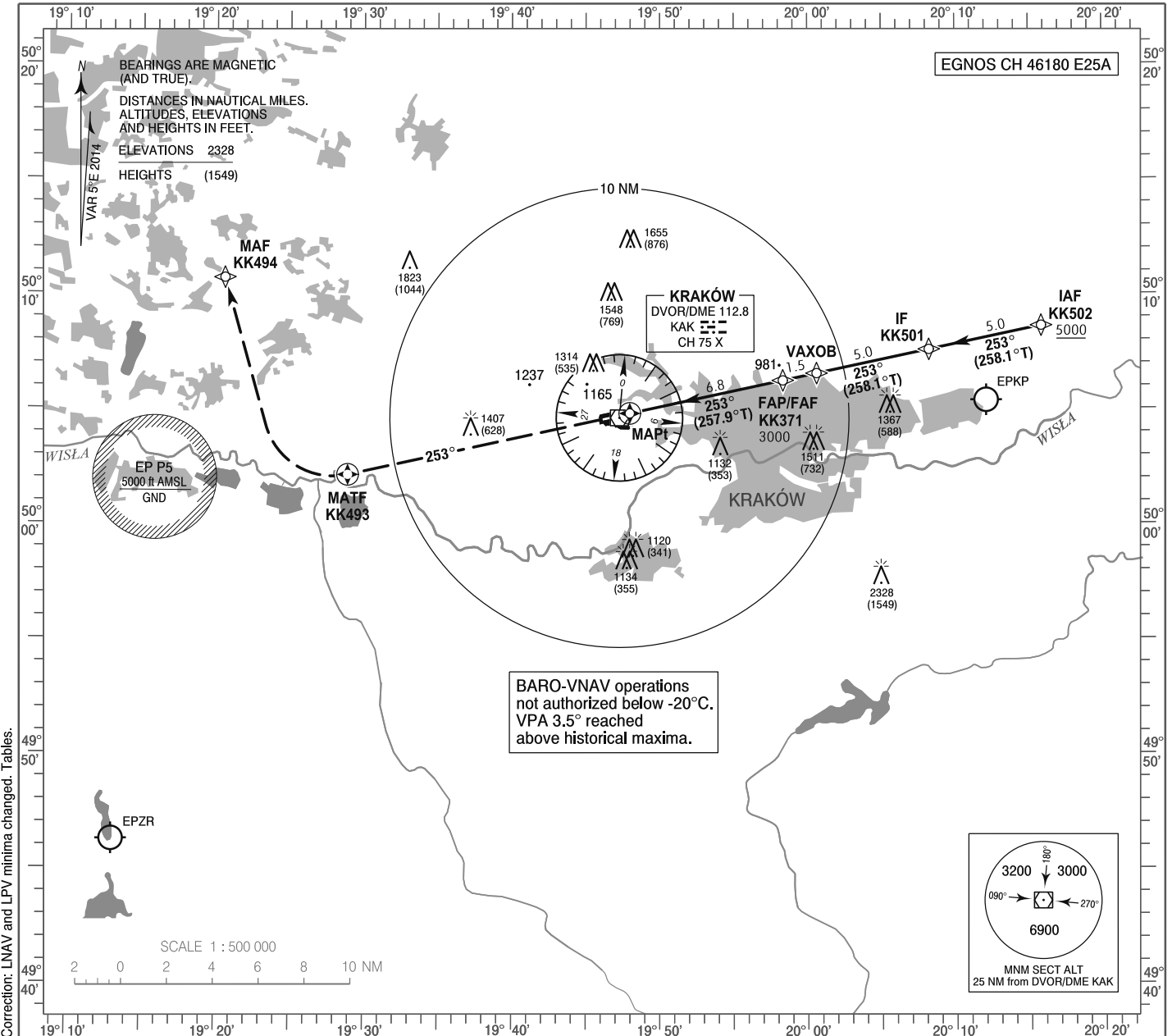


**INSTRUMENT
APPROACH
CHART - ICAO**

AERODROME ELEV 791 ft
THR RWY 25 ELEV 779 ft
HEIGHTS RELATED TO THR RWY 25

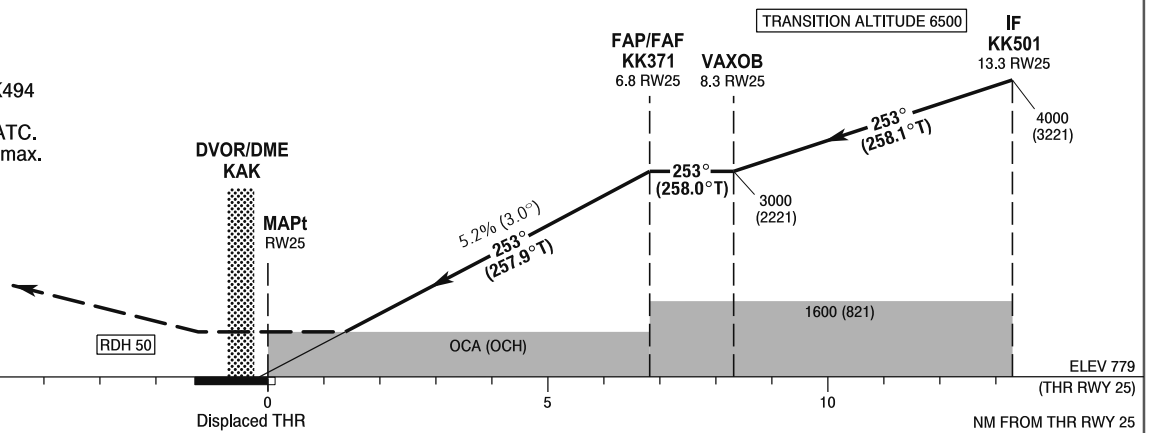
Kraków APPROACH 121.075, 135.400
Kraków TOWER 123.250
ATIS 126.125

**Kraków - Balice
RNAV (GNSS)
RWY 25 (CAT A/B/C/D)**



MISSED APPROACH

Climb straight ahead on course 253° to KK493, then turn right direct to KK494 climbing to 4000 (3221). Further instructions from ATC. Turn limited to 220 kt IAS max.



OCA (OCH)					Distance FAF - MAPt 6.8 NM								
Cat. of ACFT	A	B	C	D	Speed	kt	80	100	120	140	160	180	
Straight - in	LNAV	1280 (501)	1280 (501)	1280 (501)	1280 (501)	Time	min : s	5 : 07	4 : 06	3 : 25	2 : 56	2 : 34	2 : 17
	LNAV / VNAV	1110 (331)	1120 (341)	1130 (351)	1140 (361)	Rate of descent	ft / min	420	530	630	740	840	950
	LPV	977 (198)	990 (211)	998 (219)	1008 (229)		Final approach distance/altitude (height)						
Circling (OCH AAL)*	1570 (779)	1620 (829)	1730 (939)	1950 (1159)	Distance		6	5	4	3	2		
* Circling north of aerodrome only.					Altitude (height)		2740 (1961)	2420 (1641)	2100 (1321)	1790 (1011)	1460 (701)		