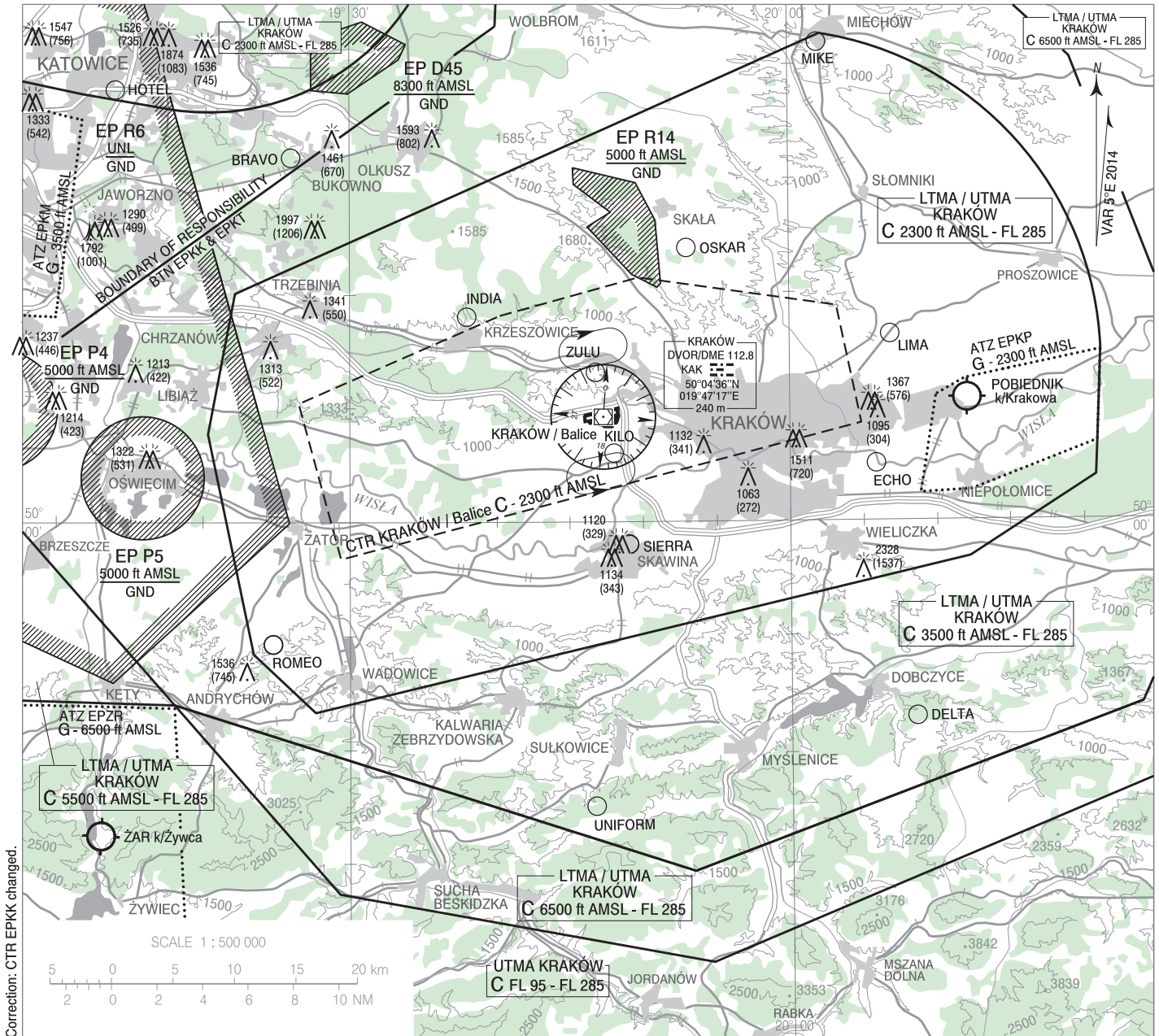


**VISUAL
OPERATION
CHART**

AERODROME ELEV 791 ft
HEIGHTS RELATED TO AD ELEV

Kraków APPROACH	121.075
Kraków TOWER	135.400
	123.250

Kraków - Balice



Correction: CTR EPKK changed.

RADIO COMMUNICATION MANDATORY POINTS
(see AIP Poland AD 2 EPKK and EPKT)

POINT ID	LATITUDE	LONGITUDE	POINT DESCRIPTION
BRAVO	50°16'00"N	019°26'00"E	Bukowno
DELTA	49°51'25"N	020°08'30"E	near Dobczyce
ECHO	50°02'31"N	020°05'52"E	Water power plant on the Vistula River
HOTEL	50°19'00"N	019°14'00"E	Strzemieszyce - junction of S1 and 94 roads
INDIA	50°09'00"N	019°38'00"E	Krzeszowice - mine, north of the city
KILO	50°03'00"N	019°48'00"E	Kryspinów - to the south of the water reservoir
LIMA	50°08'11"N	020°06'52"E	Luborzycza town
MIKE	50°21'00"N	020°02'00"E	Miechów
OSKAR	50°12'00"N	019°53'00"E	Smardzowice - church
ROMEO	49°54'39"N	019°24'46"E	near Radocza
SIERRA	49°59'00"N	019°49'00"E	Skawina
UNIFORM	49°47'31"N	019°46'41"E	near Sułkowice
ZULU	50°06'33"N	019°46'46"E	Zabierzów - radar dome