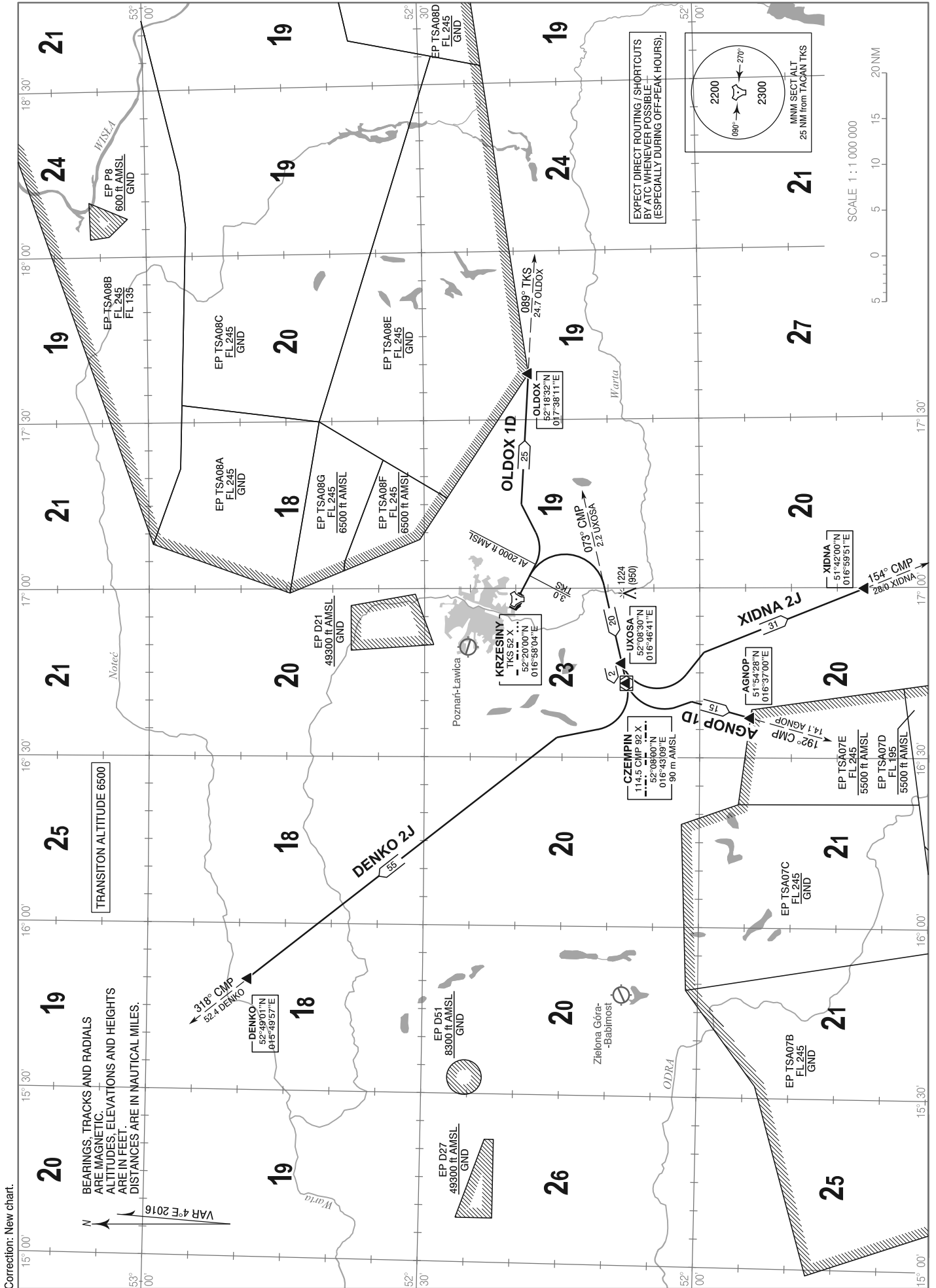


**STANDARD DEPARTURE CHART  
INSTRUMENT  
(SID) - ICAO**

AERODROME ELEV 276 ft  
THR RWY 29 ELEV 274 ft  
HEIGHTS RELATED TO THR RWY 29

Poznań APPROACH 129.025  
Krzesiny TOWER 121.025

**POZNAŃ / Krzesiny  
RWY 11**



**STANDARD DEPARTURE CHART  
INSTRUMENT (SID)**
**POZNAŃ / Krzesiny  
RWY 11**

DESIGNATOR	ROUTE DESCRIPTION SID 11	REMARKS
DENKO 2J	Climb gradient of 9.8 % is required up to FL110 for ATC purposes. On RWY track to 3 NM TKS. Then turn right direct to DVOR/DME CMP. Turn limited to IAS 250 kt max. At DVOR/DME CMP turn right to intercept RDL 318 CMP to DENKO. Turn limited to IAS 290 kt max. Further instructions from ATC.	<b>SID routes requirements:</b> - bank angle of 15°, - standard PDG = 3.3 % (except when otherwise mentioned in SID route description).  For turns at DVOR/DME CMP, UXOSA required bank angle is 25°.
AGNOP 1D	Climb gradient of 9.8 % is required up to FL110 for ATC purposes. On RWY track to 3 NM TKS. Then turn right direct to DVOR/DME CMP. Turn limited to IAS 250 kt max. At DVOR/DME CMP turn left to intercept RDL 192 CMP to AGNOP. Turn limited to IAS 290 kt max. Further instructions from ATC.	
XIDNA 2J	Climb gradient of 9.8 % is required up to FL110 for ATC purposes. On RWY track to 3 NM TKS. Then turn right direct to intercept RDL 073 CMP to UXOSA. Turn limited to IAS 250 kt max. At UXOSA turn left to intercept RDL 154 CMP to XIDNA. Turn limited to IAS 290 kt max. Further instructions from ATC.	
OLDOX 1D	Climb gradient of 7.5 % is required up to FL 100 due to airspace restrictions. On RWY track to ALT 2000 ft AMSL. Then turn left to intercept RDL 089 TKS to OLDOX. Turn limited to IAS 250 kt max. Further instructions from ATC.	

ACFT unable to achieve SID profile restrictions must request non-standard departure from ATC services before start-up.

**AFTER DEPARTURE IMMEDIATELY  
CONTACT POZNAŃ APP**