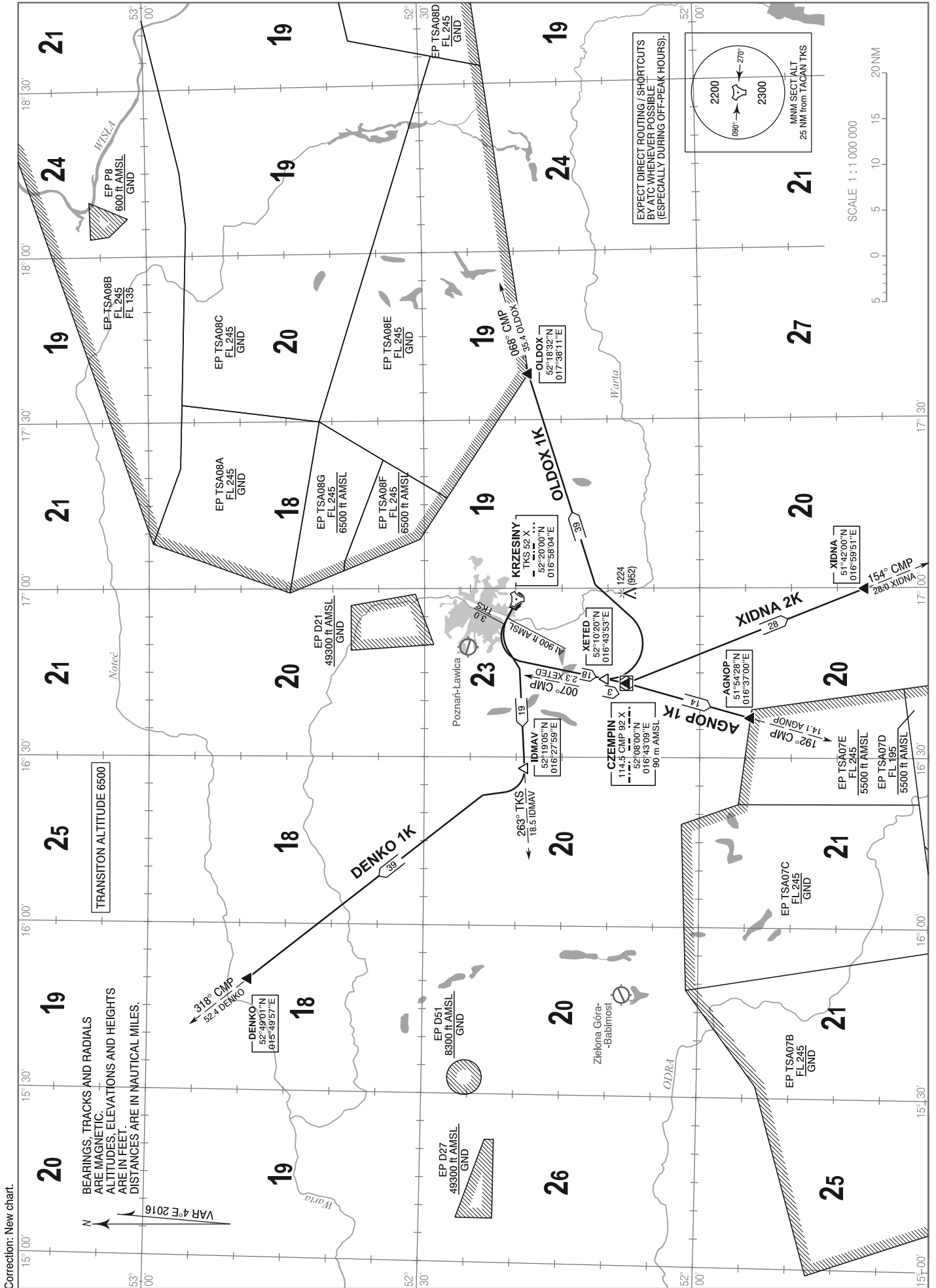


**STANDARD DEPARTURE CHART  
INSTRUMENT  
(SID) - ICAO**

AERODROME ELEV 276 ft  
THR RWY 11 ELEV 272 ft  
HEIGHTS RELATED TO THR RWY 11

Poznań APPROACH 129.025  
Krzesiny TOWER 121.025

**POZNAŃ / Krzesiny  
RWY 29**

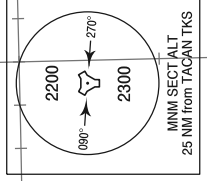


Correction: New chart.

BEARINGS, TRACKS AND RADIALS  
ARE MAGNETIC  
ALTITUDES, ELEVATIONS AND HEIGHTS  
ARE IN FEET.  
DISTANCES ARE IN NAUTICAL MILES.

VAR 4°E 2016

EXPECT DIRECT ROUTING / SHORTCUTS  
BY ATC WHENEVER POSSIBLE  
(ESPECIALLY DURING OFF-PEAK HOURS).



SCALE 1 : 1 000 000



**STANDARD DEPARTURE CHART  
INSTRUMENT (SID)**
**POZNAŃ / Krzesiny  
RWY 29**

DESIGNATOR	ROUTE DESCRIPTION SID 29	REMARKS
DENKO 1K	Climb gradient of 5.5 % is required up to FL100 due to airspace restrictions. On RWY track to ALT 900 ft AMSL. Then turn left to intercept RDL 263 TKS to IDMAV. At IDMAV turn right to intercept RDL 318 CMP to DENKO. Turns limited to IAS 250 kt max. Further instructions from ATC.	<b>SID routes requirements:</b> - bank angle of 15°, - standard PDG = 3.3 % (except when otherwise mentioned in SID route description).
AGNOP 1K	Climb gradient of 10 % is required up to FL110 for ATC purposes. On RWY track to 3 NM TKS. Then turn left direct to DVOR/DME CMP. Turn limited to IAS 250 kt max. At DVOR/DME CMP intercept RDL 192 CMP to AGNOP. Further instructions from ATC.	For turns at DVOR/DME CMP, IDMAV, XETED required bank angle is 25°.
XIDNA 2K	Climb gradient of 10 % is required up to FL110 for ATC purposes. On RWY track to 3 NM TKS. Then turn left direct to DVOR/DME CMP. Turn limited to IAS 250 kt max. At DVOR/DME CMP intercept RDL 154 CMP to XIDNA. Further instructions from ATC.	ACFT unable to achieve SID profile restrictions must request non-standard departure from ATC services before start-up.
OLDOX 1K	Climb gradient of 10 % is required up to FL110 for ATC purposes. On RWY track to 3 NM TKS. Then turn left to intercept RDL 007 CMP to XETED. Turn limited to IAS 250 kt max. At XETED turn left to intercept RDL 068 CMP to OLDOX. Turn limited to IAS 290 kt max. Further instructions from ATC.	<b>AFTER DEPARTURE IMMEDIATELY CONTACT POZNAŃ APP</b>