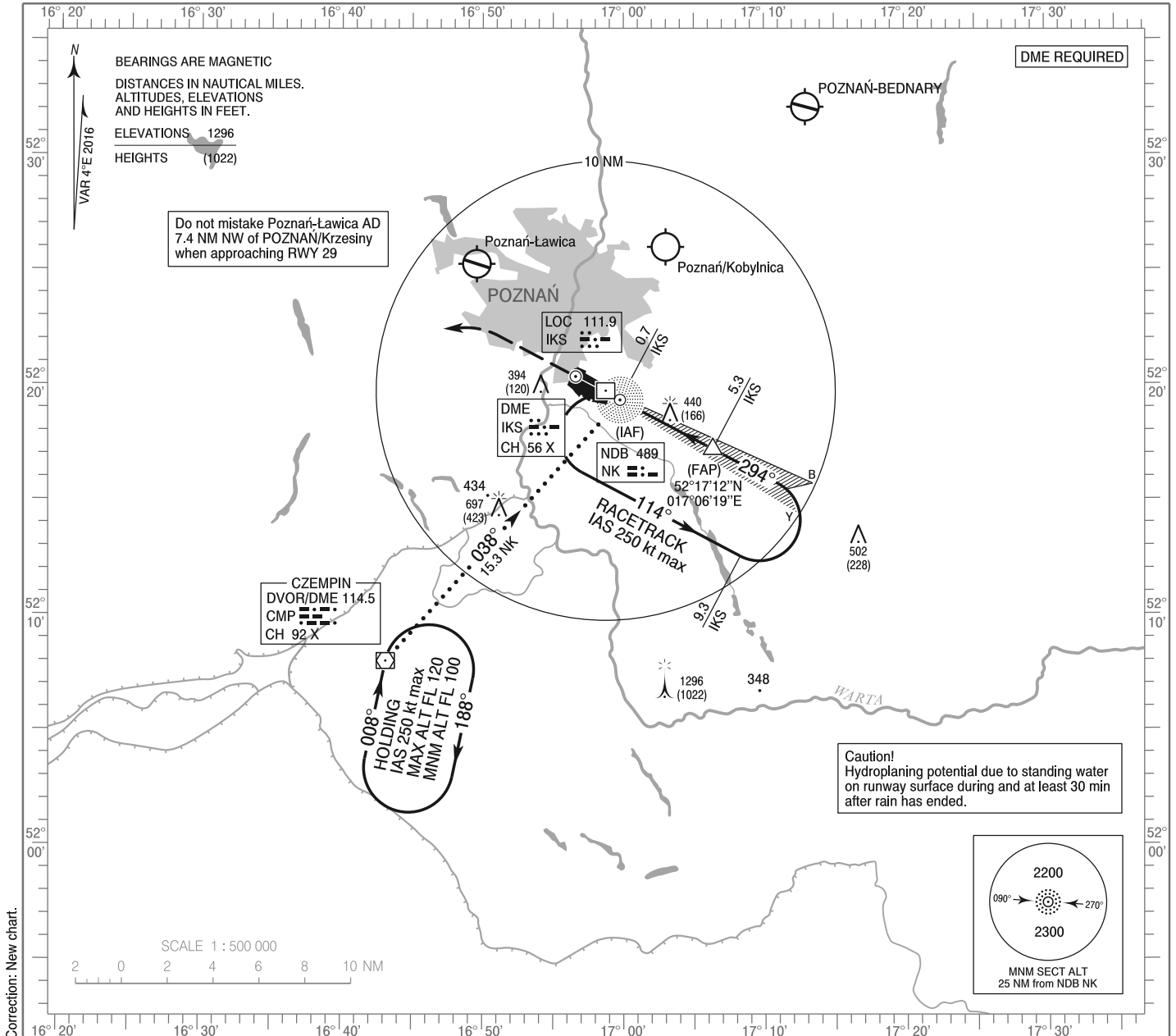


**INSTRUMENT  
APPROACH  
CHART - ICAO**

AERODROME ELEV 276 ft  
THR RWY 29 ELEV 274 ft  
HEIGHTS RELATED TO THR RWY 29

Poznań APPROACH 129.025  
Krzesiny GROUND 121.750  
Krzesiny TOWER 121.025  
ATIS 128.725

**POZNAŃ / Krzesiny  
ILS z or LOC z  
RWY 29 (CAT A/B/C/D/E)**

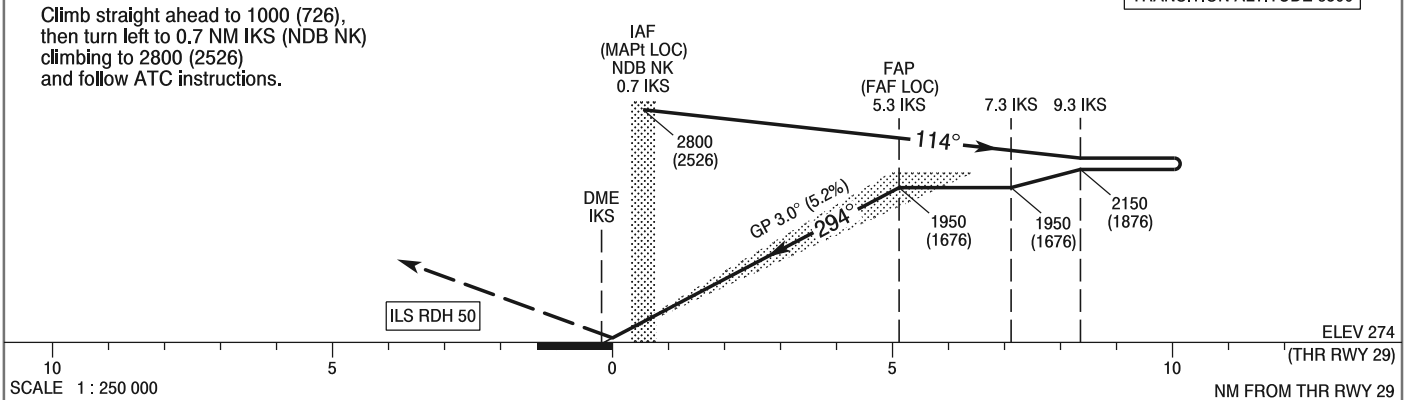


Correction: New chart.

**MISSED APPROACH**

Climb straight ahead to 1000 (726),  
then turn left to 0.7 NM IKS (NDB NK)  
climbing to 2800 (2526)  
and follow ATC instructions.

TRANSITION ALTITUDE 6500



| OCA (OCH)           |        |           |           |            |            | Distance FAF - MAPt 4.6 NM |                 |          |        |        |        |        |        |        |
|---------------------|--------|-----------|-----------|------------|------------|----------------------------|-----------------|----------|--------|--------|--------|--------|--------|--------|
| Cat. of ACFT        | A      | B         | C         | D          | E          | Speed                      | kt              | 75       | 100    | 135    | 170    | 200    | 230    |        |
| Straight-in         | Cat. I | 504 (230) | 514 (240) | 514 (240)  | 524 (250)  | 544 (270)                  | Time            | min : s  | 3 : 41 | 2 : 44 | 2 : 00 | 1 : 34 | 1 : 19 | 1 : 08 |
|                     | LOC    | 634 (360) | 634 (360) | 634 (360)  | 634 (360)  | 634 (360)                  | Rate of descent | ft / min | 394    | 531    | 709    | 905    | 1063   | 1220   |
| Circling* (OCH AAL) |        | 676 (400) | 776 (500) | 1106 (830) | 1106 (830) | 1206 (930)                 |                 |          |        |        |        |        |        |        |

\*Circling south of the aerodrome only.

**INSTRUMENT  
APPROACH  
CHART - ICAO**

**POZNAŃ / Krzesiny**  
ILS z or LOC z  
RWY 29 (CAT A/B/C/D/E)

| FIX / POINT                         | LATITUDE     | LONGITUDE     | FIX FORMATION                        |                    |
|-------------------------------------|--------------|---------------|--------------------------------------|--------------------|
| IAF<br>NDB NK                       | 52°19'20.9"N | 016°59'45.2"E |                                      |                    |
| FAP<br>(FAF LOC)                    | 52°17'12.4"N | 017°06'18.9"E | 298.05° GEO<br>(294° MAG)<br>LOC IKS | 5.30 NM<br>DME IKS |
| MAPt<br>(LOC)                       | 52°19'20.9"N | 016°59'45.2"E | 298.05° GEO<br>(294° MAG)<br>LOC IKS | 0.73 NM<br>DME IKS |
| Final approach descent angle: 3.00° |              |               |                                      |                    |