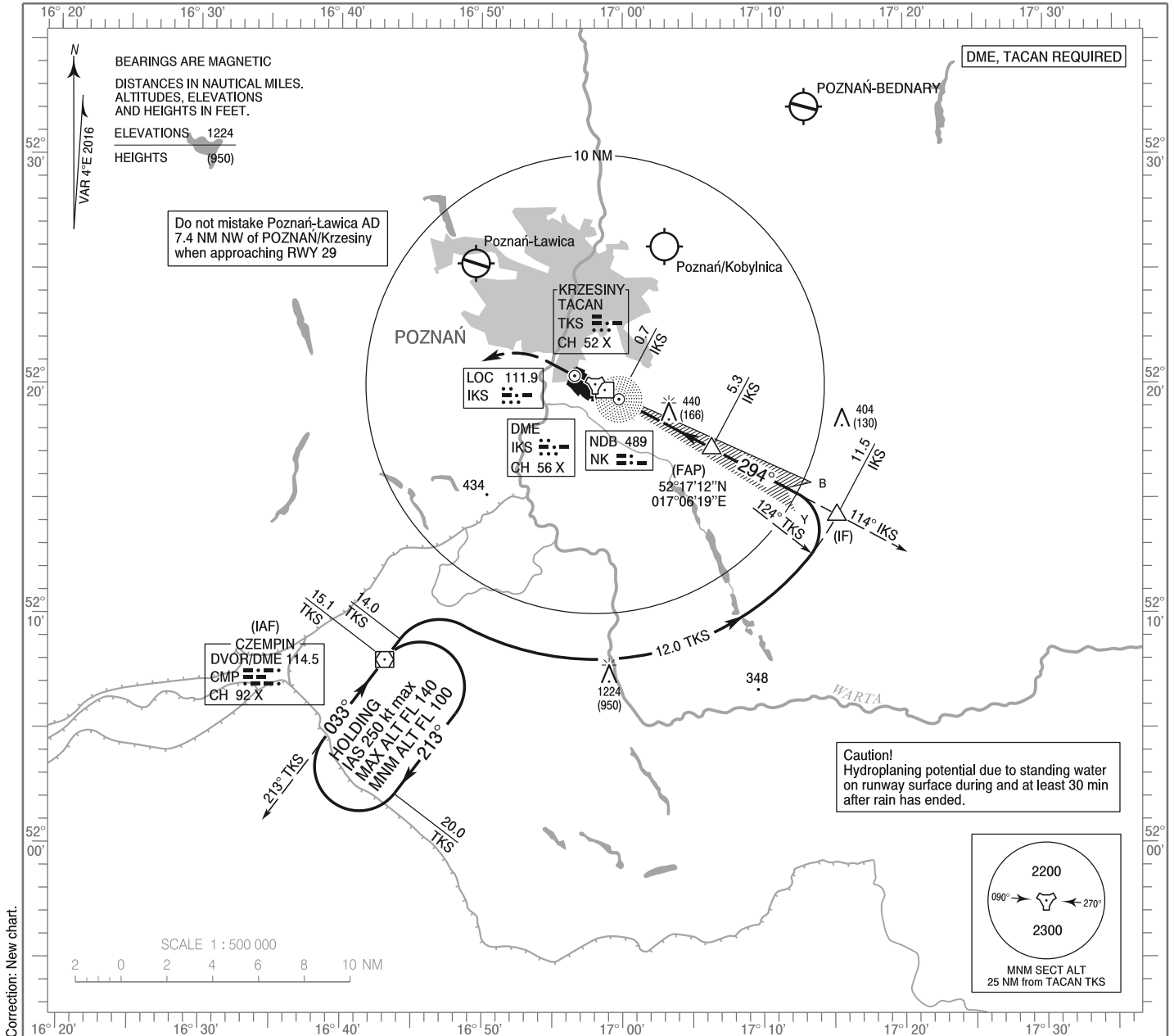


**INSTRUMENT  
APPROACH  
CHART - ICAO**

AERODROME ELEV 276 ft  
THR RWY 29 ELEV 274 ft  
HEIGHTS RELATED TO THR RWY 29

Poznań APPROACH 129.025  
Krzesiny GROUND 121.750  
Krzesiny TOWER 121.025  
ATIS 128.725

**POZNAŃ / Krzesiny  
ILS y or LOC y  
RWY 29 (CAT A/B/C/D/E)**

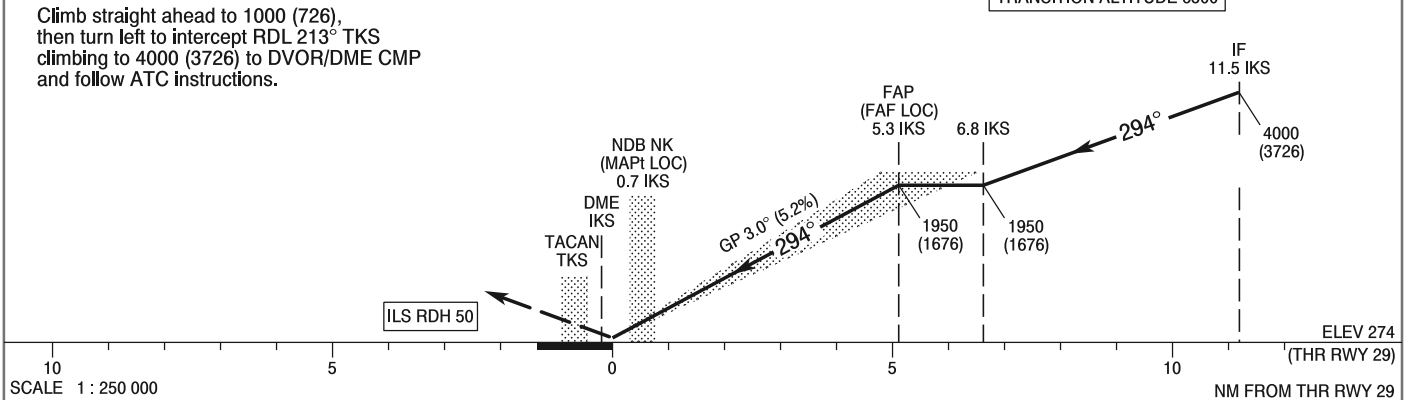


Correction: New chart.

**MISSED APPROACH**

Climb straight ahead to 1000 (726), then turn left to intercept RDL 213° TKS climbing to 4000 (3726) to DVOR/DME CMP and follow ATC instructions.

TRANSITION ALTITUDE 6500



ELEV 274 (THR RWY 29)

SCALE 1 : 250 000

Cat. of ACFT	OCA (OCH)					Distance FAF - MAPt 4.6 NM								
	A	B	C	D	E	Speed	kt	75	100	135	170	200	230	
Straight-in	Cat.I	504 (230)	514 (240)	514 (240)	524 (250)	544 (270)	Time	min : s	3 : 41	2 : 44	2 : 00	1 : 34	1 : 19	1 : 08
	LOC	634 (360)	634 (360)	634 (360)	634 (360)	634 (360)	Rate of descent	ft / min	394	531	709	905	1063	1220
Circling* (OCH AAL)		676 (400)	776 (500)	1106 (830)	1106 (830)	1206 (930)								

\*Circling south of the aerodrome only.

**INSTRUMENT  
APPROACH  
CHART - ICAO**

**POZNAŃ / Krzesiny**  
ILS y or LOC y  
RWY 29 (CAT A/B/C/D/E)

FIX / POINT	LATITUDE	LONGITUDE	FIX FORMATION	
IAF DVOR/DME CMP	52°07'59.9"N	016°43'08.5"E		
IF	52°14'17.6"N	017°15'13.2"E	298.12° GEO (294° MAG) LOC IKS	11.50 NM DME IKS
FAP (FAF LOC)	52°17'12.4"N	017°06'18.9"E	298.05° GEO (294° MAG) LOC IKS	5.30 NM DME IKS
MAPt (LOC)	52°19'20.9"N	016°59'45.2"E	298.05° GEO (294° MAG) LOC IKS	0.73 NM DME IKS
Final approach descent angle: 3.00°				