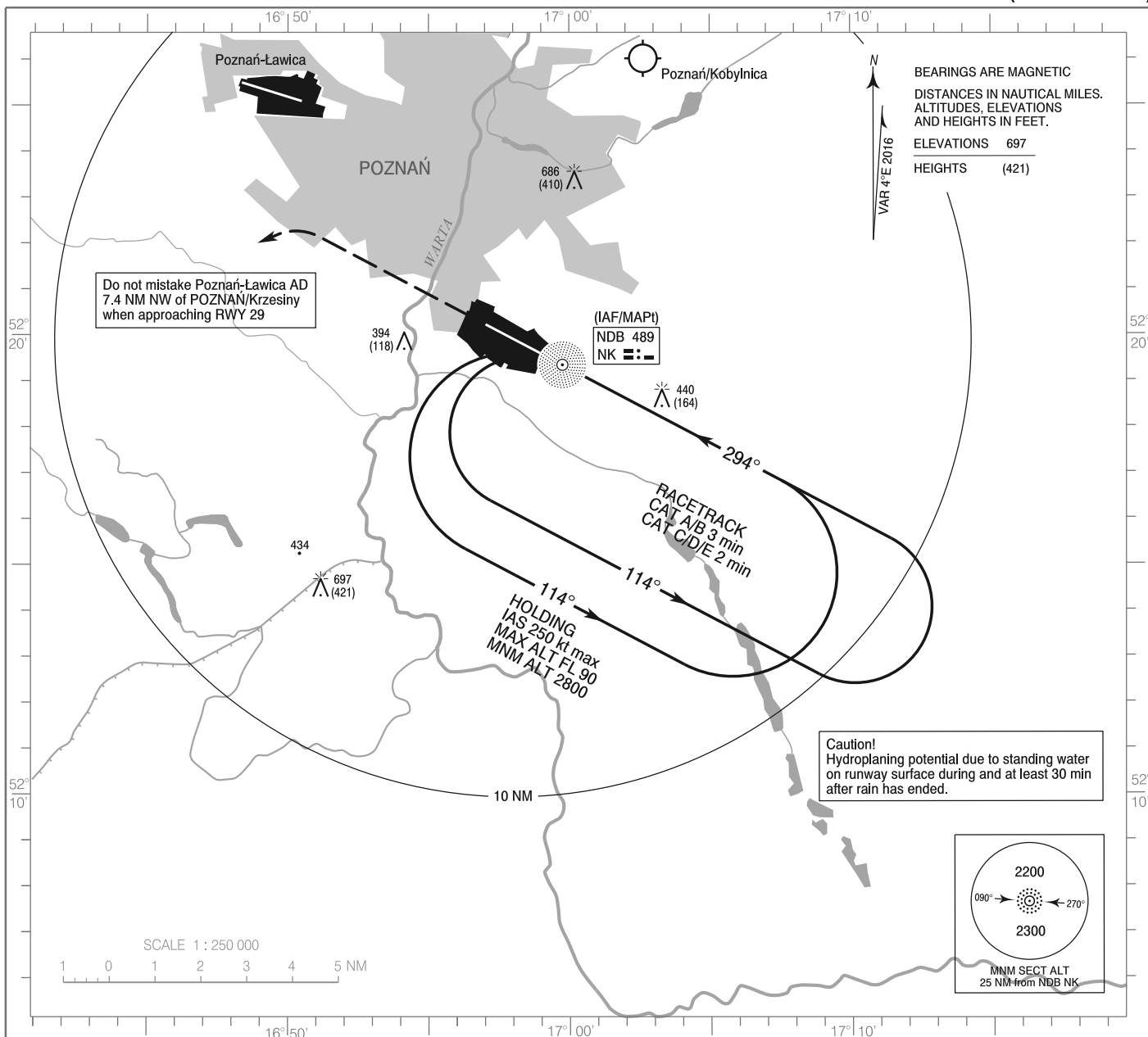


**INSTRUMENT  
APPROACH  
CHART - ICAO**

AERODROME ELEV 276 ft  
THR RWY 29 ELEV 274 ft  
HEIGHTS RELATED TO AD ELEV

Poznań APPROACH 129.025  
Krzesiny GROUND 121.750  
Krzesiny TOWER 121.025  
ATIS 128.725

**POZNAŃ / Krzesiny  
NDB  
RWY 29 (CAT A/B/C/D/E)**

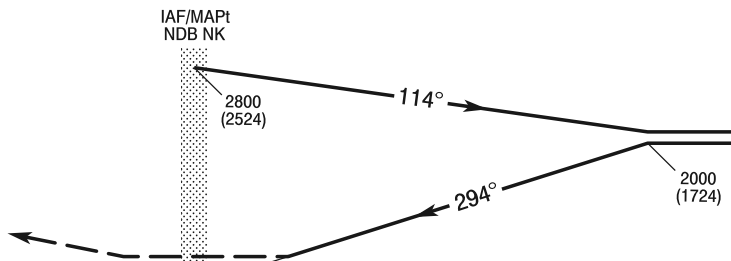


Correction: New chart.

**MISSED APPROACH**

Climb straight ahead to 1300 (1024),  
then turn left to NDB NK  
climbing to 2800 (2524)  
and follow ATC instructions.

TRANSITION ALTITUDE 6500



ELEV 276  
(AD ELEV)

SCALE 1 : 250 000 NM FROM THR RWY 29

| OCA (OCH)     |           |           |            |            |            |
|---------------|-----------|-----------|------------|------------|------------|
| Cat. of ACFT  | A         | B         | C          | D          | E          |
| Straight - in | 746 (470) | 746 (470) | 746 (470)  | 746 (470)  | 746 (470)  |
|               |           |           |            |            |            |
| Circling*     | 746 (470) | 776 (500) | 1106 (830) | 1106 (830) | 1206 (930) |

\*Circling south of the aerodrome only.

**INSTRUMENT  
APPROACH  
CHART - ICAO**

**POZNAŃ / Krzesiny  
NDB  
RWY 29 (CAT A/B/C/D/E)**

| FIX / POINT    | LATITUDE     | LONGITUDE     | FIX FORMATION |  |
|----------------|--------------|---------------|---------------|--|
| IAF<br>NDB NK  | 52°19'20.9"N | 016°59'45.2"E |               |  |
| MAPt<br>NDB NK | 52°19'20.9"N | 016°59'45.2"E |               |  |
|                |              |               |               |  |