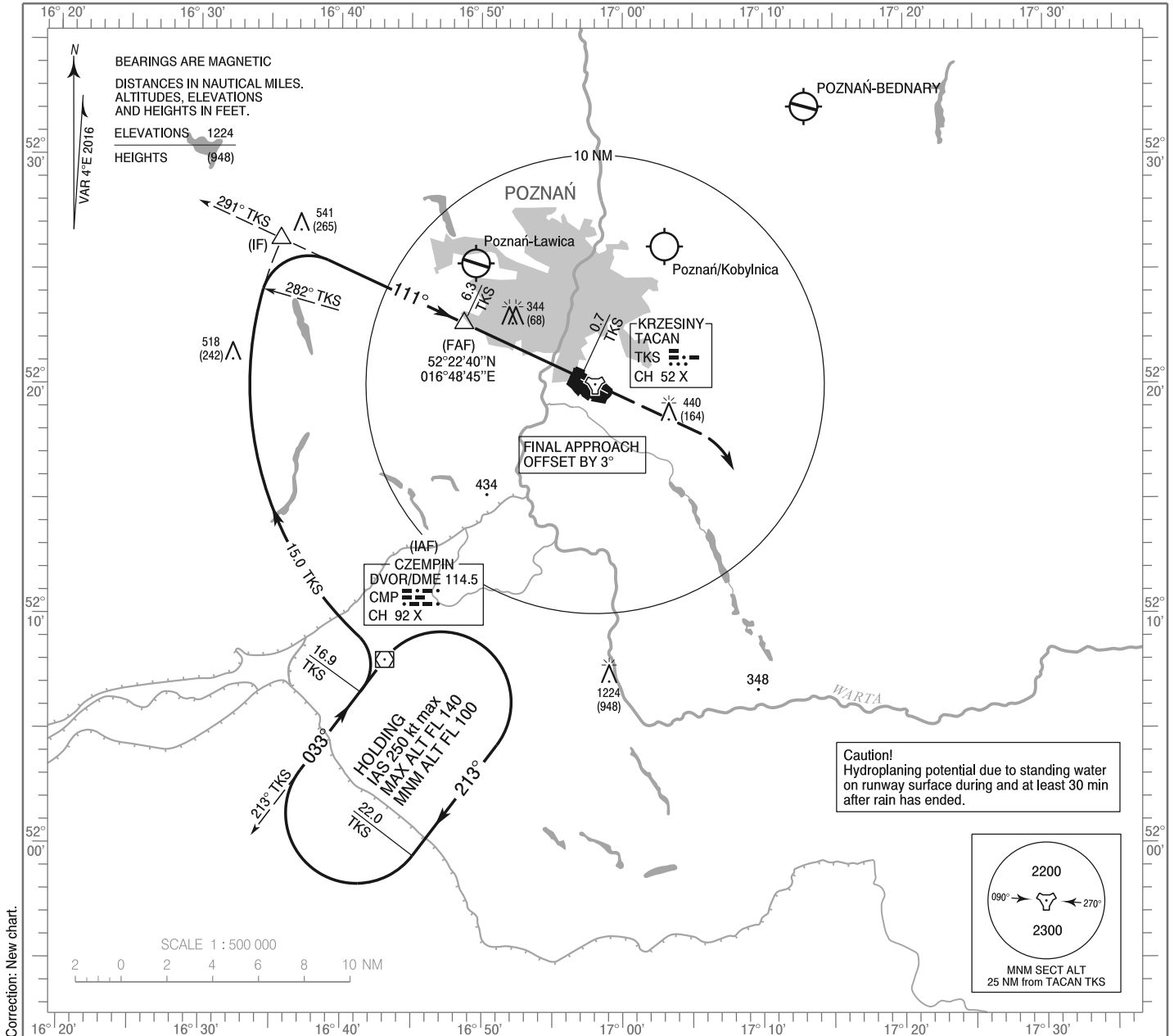


**INSTRUMENT  
APPROACH  
CHART - ICAO**

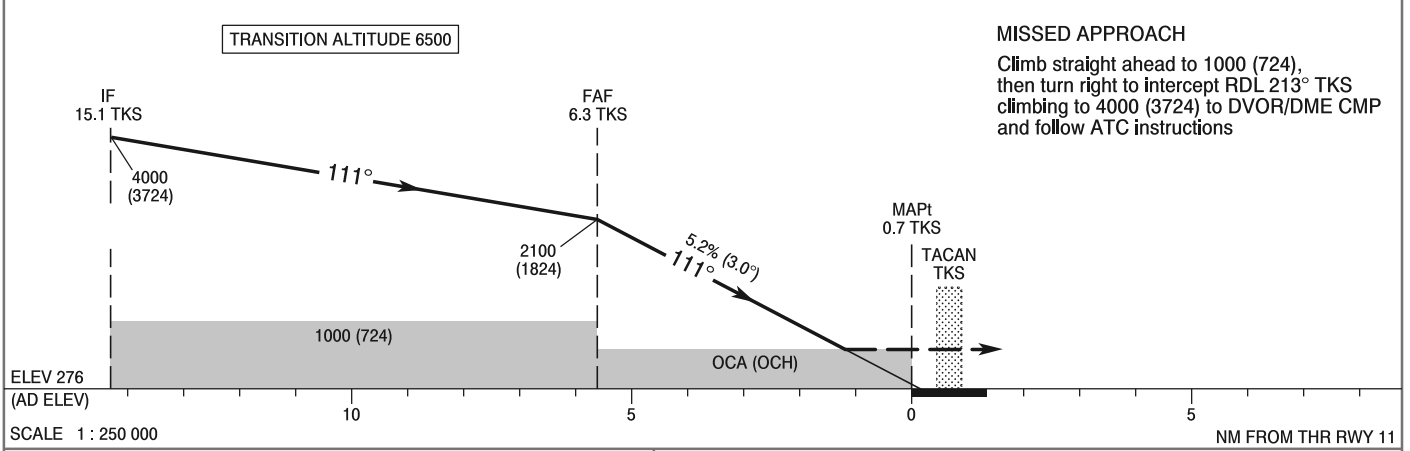
AERODROME ELEV 276 ft  
THR RWY 11 ELEV 272 ft  
HEIGHTS RELATED TO AD ELEV

Poznań APPROACH 129.025  
Krzesiny GROUND 121.750  
Krzesiny TOWER 121.025  
ATIS 128.725

**POZNAŃ / Krzesiny  
TACAN  
RWY 11 (CAT A/B/C/D/E)**



Correction: New chart.



OCA (OCH)						Distance FAF - MAPt 5.6 NM							
Cat. of ACFT	A	B	C	D	E	Speed	kt	70	100	130	160	200	230
Straight - in	696 (420)	696 (420)	696 (420)	696 (420)	696 (420)	Time	min : s	4 : 41	3 : 16	2 : 32	2 : 01	1 : 38	1 : 25
						Rate of descent	ft / min	374	551	709	886	1102	1280
Circling*	696 (420)	776 (500)	1106 (830)	1106 (830)	1206 (930)								

\*Circling south of the aerodrome only.

**INSTRUMENT  
APPROACH  
CHART - ICAO**

**POZNAŃ / Krzesiny  
TACAN  
RWY 11 (CAT A/B/C/D/E)**

FIX / POINT	LATITUDE	LONGITUDE	FIX FORMATION	
IAF DVOR/DME CMP	52°07'59.9"N	016°43'08.5"E		
IF	52°26'20.1"N	016°35'41.8"E	294.87° GEO (291° MAG) TACAN TKS	15.11 NM TACAN TKS
FAF	52°22'39.6"N	016°48'44.5"E	294.98° GEO (291° MAG) TACAN TKS	6.30 NM TACAN TKS
MAPt	52°20'17.6"N	016°57'01.5"E	295.00° GEO (291° MAG) TACAN TKS	0.70 NM TACAN TKS
Final approach descent angle: 3.00°				