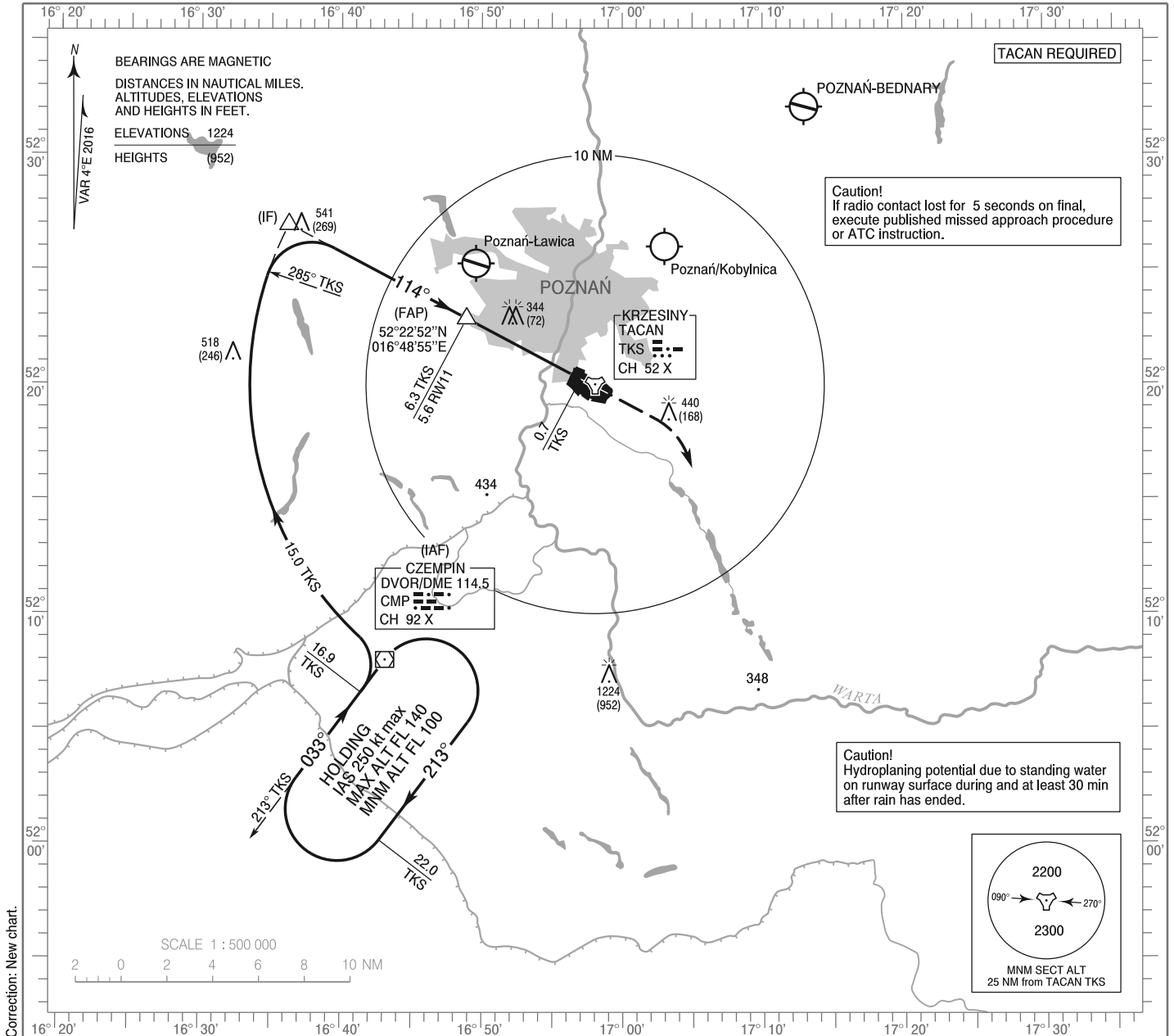


**INSTRUMENT  
APPROACH  
CHART - ICAO**

AERODROME ELEV 276 ft  
THR RWY 11 ELEV 272 ft  
HEIGHTS RELATED TO THR RWY 11

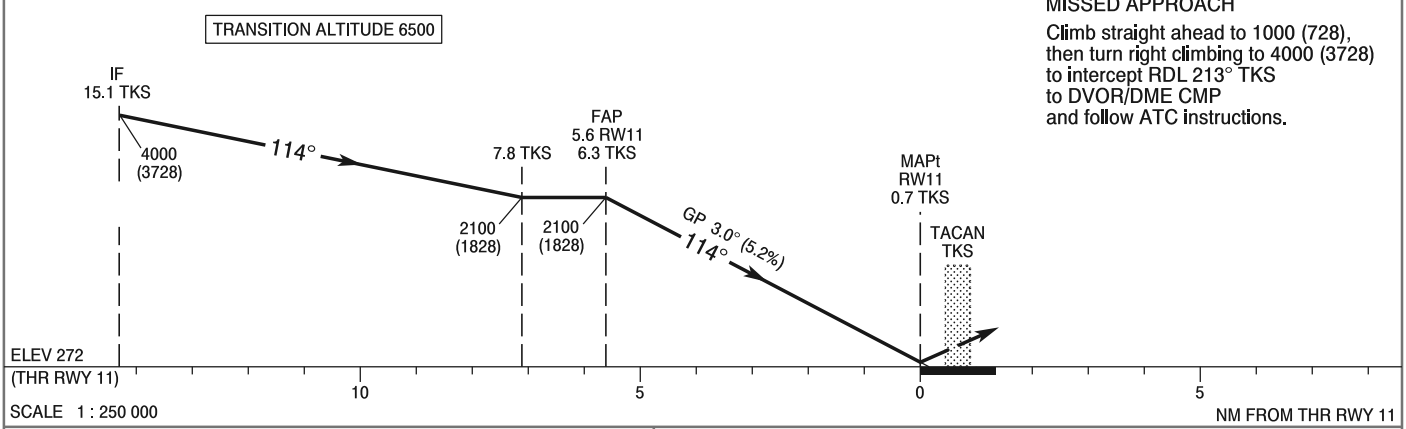
Poznań APPROACH	129.025	Krzesiny TOWER	121.025
Krzesiny PRECISION	120.750	ATIS	128.725
Krzesiny GROUND	121.750		

**POZNAŃ / Krzesiny  
PAR  
RWY 11 (CAT A/B/C/D/E)**



Correction: New chart.

**MISSED APPROACH**  
Climb straight ahead to 1000 (728), then turn right climbing to 4000 (3728) to intercept RDL 213° TKS to DVOR/DME CMP and follow ATC instructions.



Cat. of ACFT	OCA (OCH)					Distance FAF - MAPt 5.6 NM								
	A	B	C	D	E	Speed	kt	70	100	135	170	200	230	
Straight - in	PAR	552 (280)	552 (280)	552 (280)	552 (280)	552 (280)	Time	min : s	4 : 41	3 : 16	2 : 32	2 : 01	1 : 38	1 : 25
							Rate of descent	ft / min	374	552	709	886	1102	1260
Circling*		676 (400)	776 (500)	1106 (830)	1106 (830)	1206 (930)								

**INSTRUMENT  
APPROACH  
CHART - ICAO**

**POZNAŃ / Krzesiny  
PAR  
RWY 11 (CAT A/B/C/D/E)**

FIX / POINT	LATITUDE	LONGITUDE	FIX FORMATION	
IAF DVOR/DME CMP	52°07'59.9"N	016°43'08.5"E		
FAF	52°22'52.0"N	016°48'55.0"E	117.91° GEO (114° MAG) APCH COURSE	6.29 NM TACAN TKS 5.63 NM RW11
MAPt RW11	52°20'13.8"N	016°57'01.7"E	117.85° GEO (114° MAG) APCH COURSE	0.67 NM TACAN TKS RW11
Final approach descent angle: 3.00°				