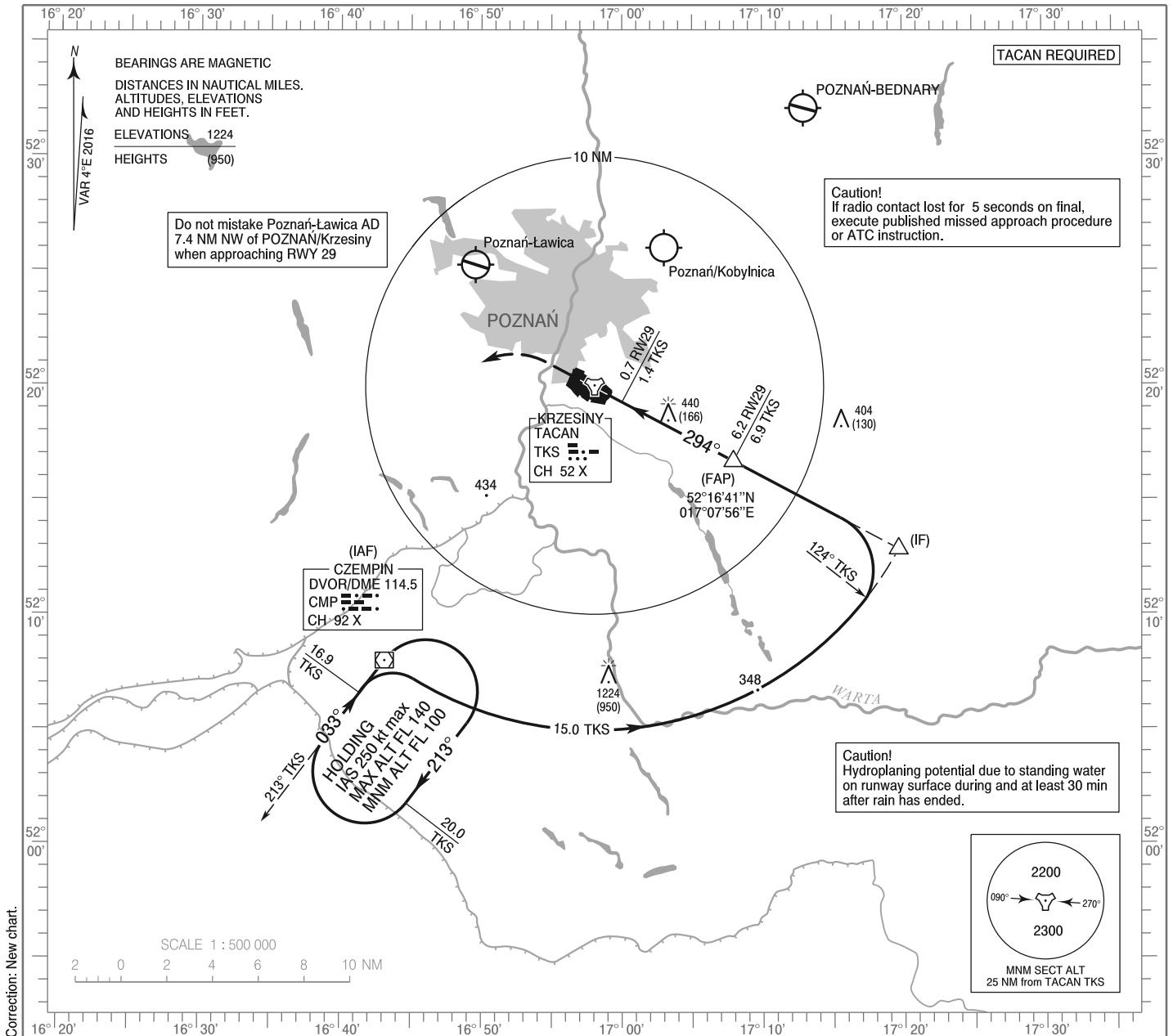


**INSTRUMENT
APPROACH
CHART - ICAO**

AERODROME ELEV 276 ft
THR RWY 29 ELEV 274 ft
HEIGHTS RELATED TO THR RWY 29

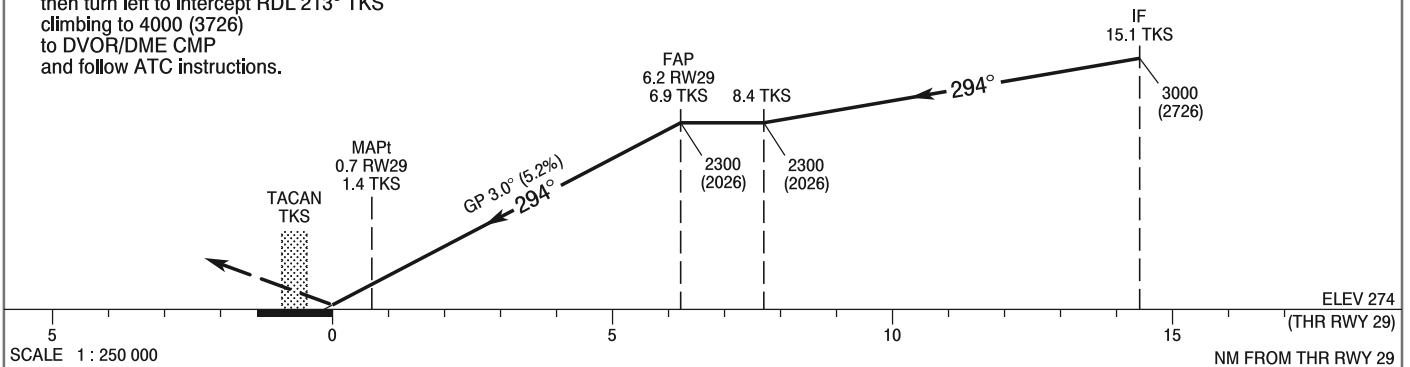
Poznań APPROACH	129.025	Krzesiny TOWER	121.025
Krzesiny PRECISION	120.750	ATIS	128.725
Krzesiny GROUND	121.750		

**POZNAŃ / Krzesiny
PAR
RWY 29 (CAT A/B/C/D/E)**



MISSED APPROACH
Climb straight ahead to 1000 (726),
then turn left to intercept RDL 213° TKS
climbing to 4000 (3726)
to DVOR/DME CMP
and follow ATC instructions.

TRANSITION ALTITUDE 6500



Cat. of ACFT	OCA (OCH)					Distance FAF - MAPt 5.5 NM								
	A	B	C	D	E	Speed	kt	75	100	135	170	200	230	
Straight - in	PAR	554 (280)	554 (280)	554 (280)	554 (280)	554 (280)	Time	min : s	4 : 25	3 : 18	2 : 27	1 : 56	1 : 39	1 : 26
							Rate of descent	ft / min	440	595	800	1015	1195	1370
Circling* (OCH AAL)		676 (400)	776 (500)	1106 (830)	1106 (830)	1206 (930)								

*Circling south of the aerodrome only.

**INSTRUMENT
APPROACH
CHART - ICAO**

**POZNAŃ / Krzesiny
PAR
RWY 29 (CAT A/B/C/D/E)**

FIX / POINT	LATITUDE	LONGITUDE	FIX FORMATION	
IAF DVOR/DME CMP	52°07'59.9"N	016°43'08.5"E		
FAF	52°16'41.0"N	017°07'56.0"E	298.00° GEO (294° MAG) APCH COURSE	6.91 NM TACAN TKS 6.23 NM RW29
MAPt	52°19'15.8"N	017°00'00.0"E	298.05° GEO (294° MAG) APCH COURSE	1.40 NM TACAN TKS 0.72 NM RW29
Final approach descent angle: 3.00°				