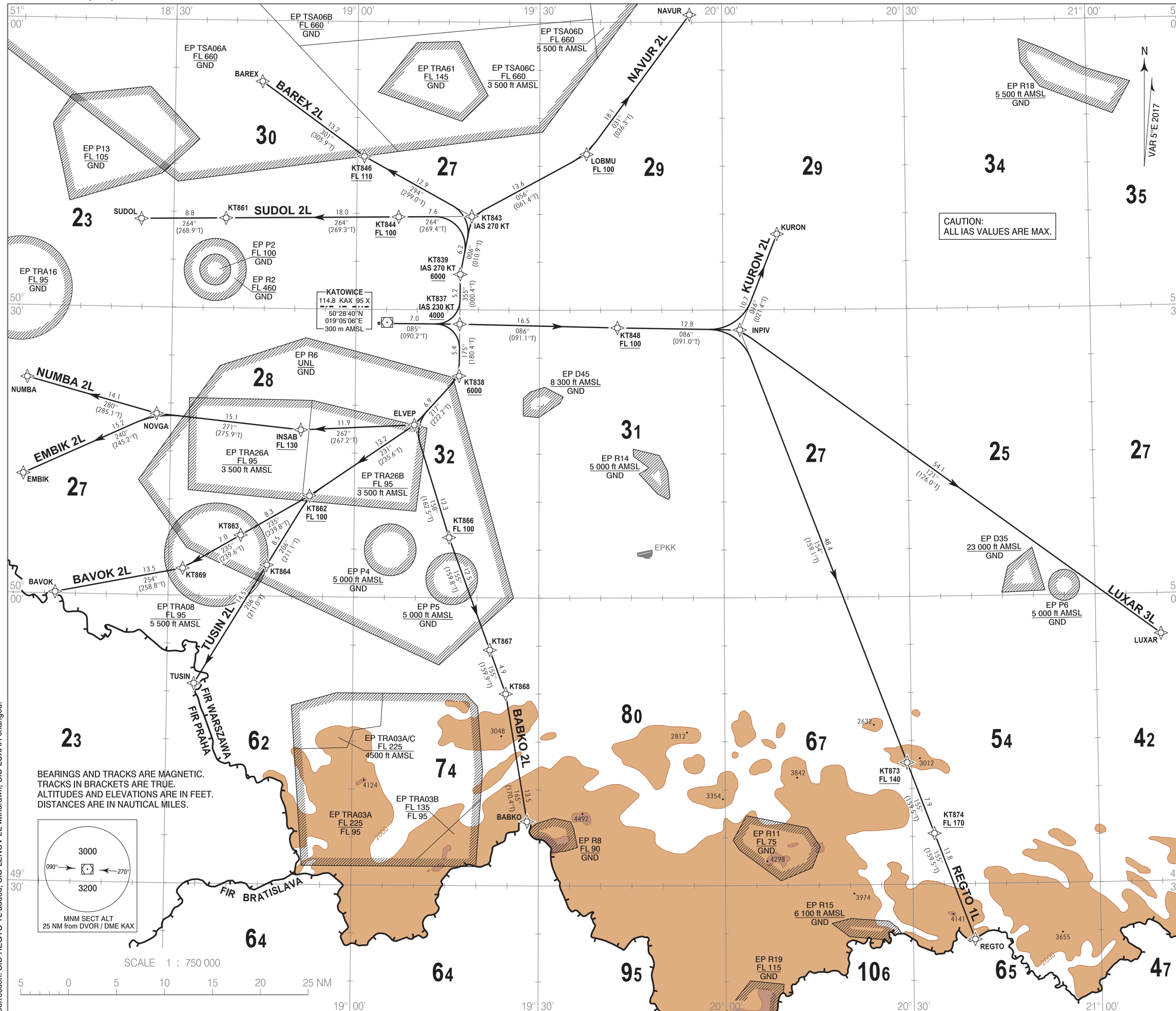


**RNAV 1 (GNSS)
STANDARD DEPARTURE CHART
INSTRUMENT (SID) - ICAO**

TRANSITION ALTITUDE 6500

Kraków APPROACH 121.075, 135.400
Katowice DELIVERY 121.800
Katowice TOWER 129.250

**Katowice - Pyrzowice
RWY 09**



1. RNAV 1 approval required to conduct these procedures without additional restrictions. However it is possible to utilize RNAV 1 trajectories by RNAV 5 only approved aircraft. The following restriction applies: aircraft equipped with RNAV 5 systems without navigation database and requiring manual data input are exempted from the utilization of RNAV 1 procedures.
2. All aircraft which can not follow and utilize RNAV 1 procedures shall advise ATC before start up. Radar vectoring will be provided, usually along published procedures.
3. Expect direct routing/shortcuts by ATC whenever possible.
4. MAX IAS during initial turn as indicated in route description.
5. Initial SID climb: climb and maintain 6000 unless otherwise cleared by ATC.
6. Aircraft unable to achieve SID profile restrictions must request non-standard departure from ATC before start up.

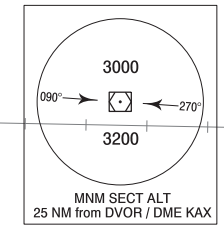
RADIO COMMUNICATION FAILURE PROCEDURE

- SET TRANSPONDER TO 7600
- a) Continue on assigned and acknowledged SID. After 3 minutes climb to FPL flight level.
 - b) If being vectored, continue on assigned heading for 3 minutes, then proceed direct to last SID WPT climbing to FPL flight level.

CAUTION:
ALL IAS VALUES ARE MAX.

Correction: SID REGTO 1L added, SID LENOV 2L withdrawn, SID LUXAR changed.

BEARINGS AND TRACKS ARE MAGNETIC.
TRACKS IN BRACKETS ARE TRUE.
ALTITUDES AND ELEVATIONS ARE IN FEET.
DISTANCES ARE IN NAUTICAL MILES.



SCALE 1 : 750 000

