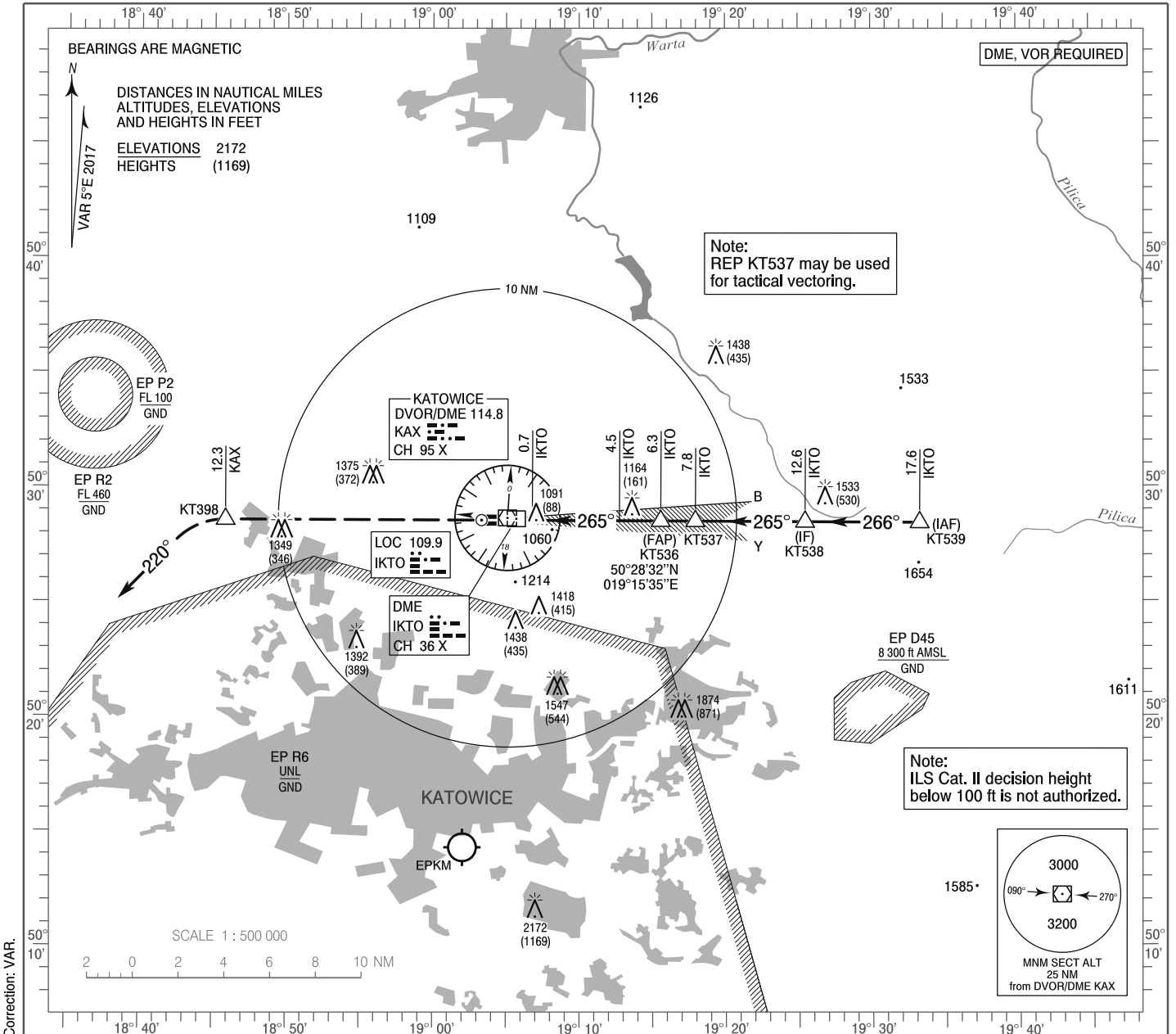


**INSTRUMENT
APPROACH
CHART - ICAO**

AERODROME ELEV 1007 ft
THR RWY 27 ELEV 1003 ft
HEIGHTS RELATED TO THR RWY 27

Kraków APPROACH 121.075, 135.400
Katowice TOWER 129.250
ATIS 120.225

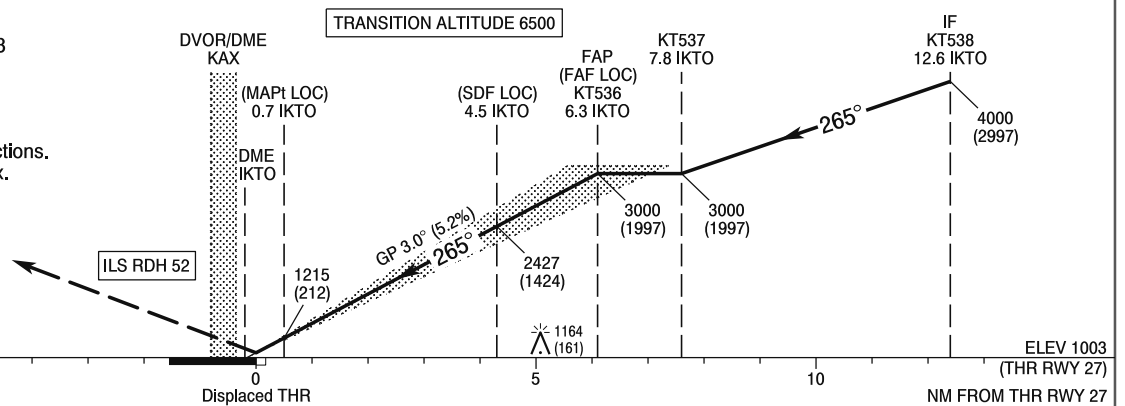
**Katowice - Pyrzowice
ILS CAT II or LOC
RWY 27 (CAT A/B/C/D)**



Correction: VAR.

MISSED APPROACH

Climb straight ahead to KT398
12.3 NM DME KAX,
then turn left on course 220°
climbing to 4000 (2997).
Reaching 4000 (2997)
contact ATC for further instructions.
Turn limited to 220 kt IAS max.



OCA (OCH)					Distance FAF - MAPt 5.6 NM								
Cat. of ACFT		A	B	C	D	Speed	kt	80	100	120	140	160	180
Straight-in	Cat. I	1221 (218)	1233 (230)	1241 (238)	1252 (249)	Time	min : s	4 : 12	3 : 22	2 : 48	2 : 24	2 : 06	1 : 52
	Cat. II	1083 (80)	1100 (97)	1112 (109)	1126 (123)	Rate of descent	ft / min	430	530	640	740	850	960
	LOC	1340 (337)	1340 (337)	1340 (337)	1340 (337)	Final approach distance/altitude (height)							
		When stepdown fix not received				Distance	6	5	4	3	2		
Circling (OCH AAL)*		1460 (453)	1610 (603)	1820 (813)	1840 (833)	Altitude (height)	2910 (1907)	2590 (1587)	2270 (1267)	1950 (947)	1640 (637)		

*ACFT cat. D circling north of aerodrome only.

**INSTRUMENT
APPROACH
CHART - ICAO**

**Katowice - Pyrzowice
ILS CAT II or LOC
RWY 27 (CAT A/B/C/D)**

FIX / POINT	LATITUDE	LONGITUDE	FIX FORMATION	
IAF KT539	50°28'26.3"N	019°33'16.1"E	270.56° GEO (266° MAG) LOC IKTO	17.60 NM DME IKTO
IF KT538	50°28'29.0"N	019°25'26.5"E	270.46° GEO (265° MAG) LOC IKTO	12.60 NM DME IKTO
KT537	50°28'31.1"N	019°17'56.8"E	270.37° GEO (265° MAG) LOC IKTO	7.82 NM DME IKTO
FAP (FAF LOC) KT536	50°28'31.7"N	019°15'34.7"E	270.34° GEO (265° MAG) LOC IKTO	6.30 NM DME IKTO
SDF (LOC)	50°28'32.3"N	019°12'45.4"E	270.30° GEO (265° MAG) LOC IKTO	4.50 NM DME IKTO
MAPt (LOC)	50°28'33.3"N	019°06'48.2"E	270.22° GEO (265° MAG) LOC IKTO	0.70 NM DME IKTO
KT398	50°28'34.6"N	018°45'50.4"E	270.18° GEO (265° MAG) DVOR KAX	12.31 NM DME KAX
Final approach descent angle: 3.00°				