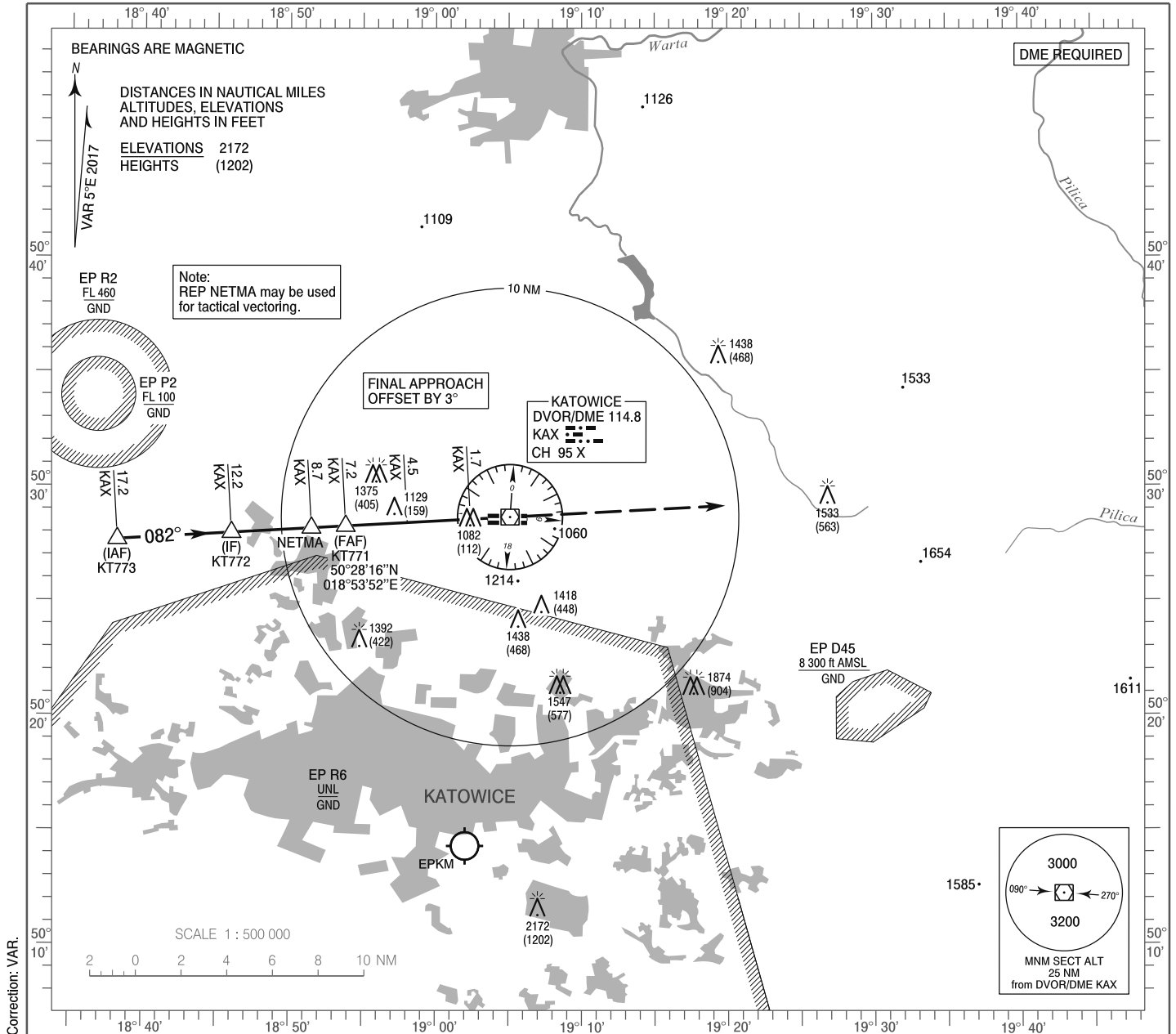


**INSTRUMENT
APPROACH
CHART - ICAO**

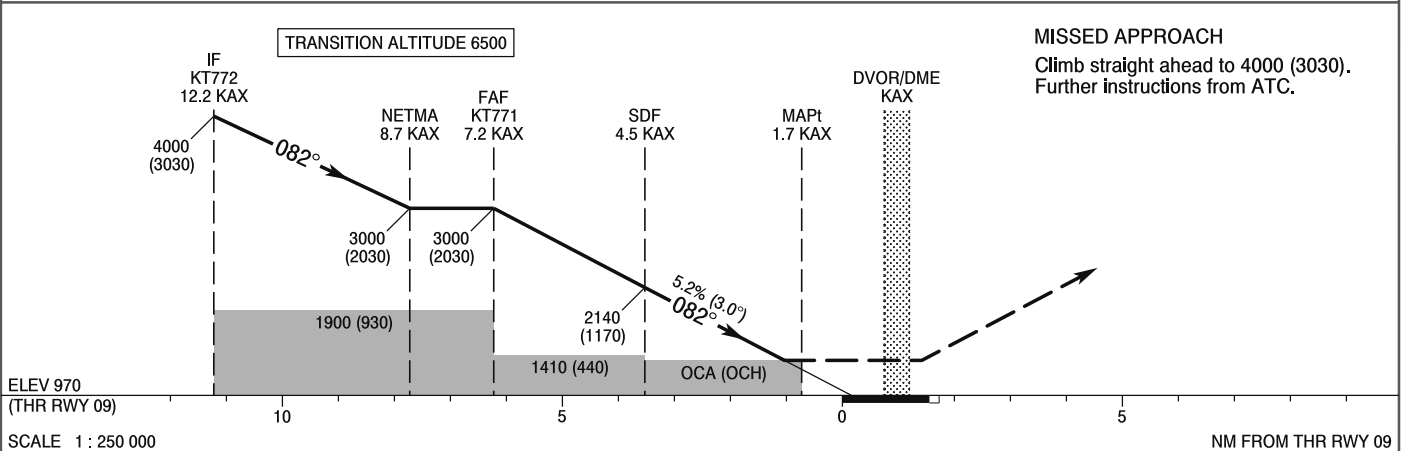
AERODROME ELEV 1007
THR RWY 09 ELEV 970 ft
HEIGHTS RELATED TO THR RWY 09

Kraków APPROACH 121.075, 135.400
Katowice TOWER 129.250
ATIS 120.225

**Katowice - Pyrzowice
VOR
RWY 09 (CAT A/B/C/D)**



Correction: VAR.



OCA (OCH)					Distance FAF - MAPt 5.5 NM							
Cat. of ACFT	A	B	C	D	Speed	kt	80	100	120	140	160	180
Straight - in	1350 (380)	1350 (380)	1350 (380)	1350 (380)	Time	min : s	4 : 06	3 : 16	2 : 44	2 : 20	2 : 03	1 : 49
	When stepdown fix not received				Rate of descent	ft / min	430	540	640	750	850	960
Circling (OCH AAL)*	1460 (453)	1610 (603)	1820 (813)	1840 (833)	Final approach distance/altitude (height)							
					Distance		6	5	4	3		
*ACFT cat. D circling north of aerodrome only.					Altitude (height)		2620 (1650)	2300 (1330)	1990 (1020)	1670 (700)		

**INSTRUMENT
APPROACH
CHART - ICAO**

**Katowice - Pyrzowice
VOR
RWY 09 (CAT A/B/C/D)**

FIX / POINT	LATITUDE	LONGITUDE	FIX FORMATION	
IAF KT773	50°27'40.1"N	018°38'14.1"E	266.86° GEO (262° MAG) DVOR KAX	17.20 NM DME KAX
IF KT772	50°27'58.1"N	018°46'02.8"E	266.86° GEO (262° MAG) DVOR KAX	12.20 NM DME KAX
NETMA	50°28'10.3"N	018°51'30.9"E	266.86° GEO (262° MAG) DVOR KAX	8.70 NM DME KAX
FAF KT771	50°28'15.5"N	018°53'51.6"E	266.86° GEO (262° MAG) DVOR KAX	7.20 NM DME KAX
SDF	50°28'24.7"N	018°58'04.4"E	266.86° GEO (262° MAG) DVOR KAX	4.50 NM DME KAX
MAPt	50°28'33.9"N	019°02'23.4"E	266.86° GEO (262° MAG) DVOR KAX	1.74 NM DME KAX
Final approach descent angle: 3.00°				