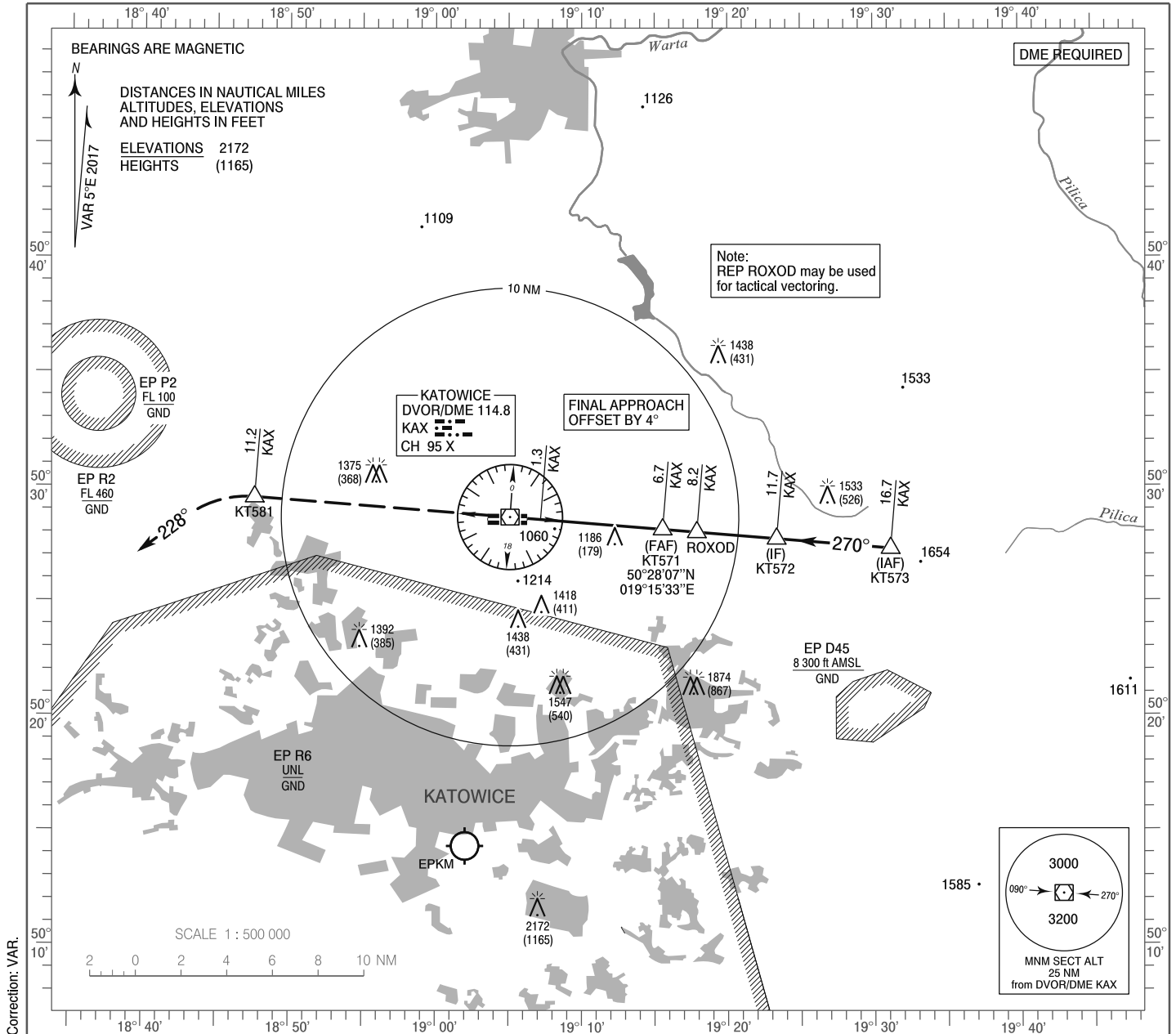


**INSTRUMENT
APPROACH
CHART - ICAO**

AERODROME ELEV 1007 ft
THR RWY 27 ELEV 1003 ft
HEIGHTS RELATED TO AD ELEV

Kraków APPROACH 121.075, 135.400
Katowice TOWER 129.250
ATIS 120.225

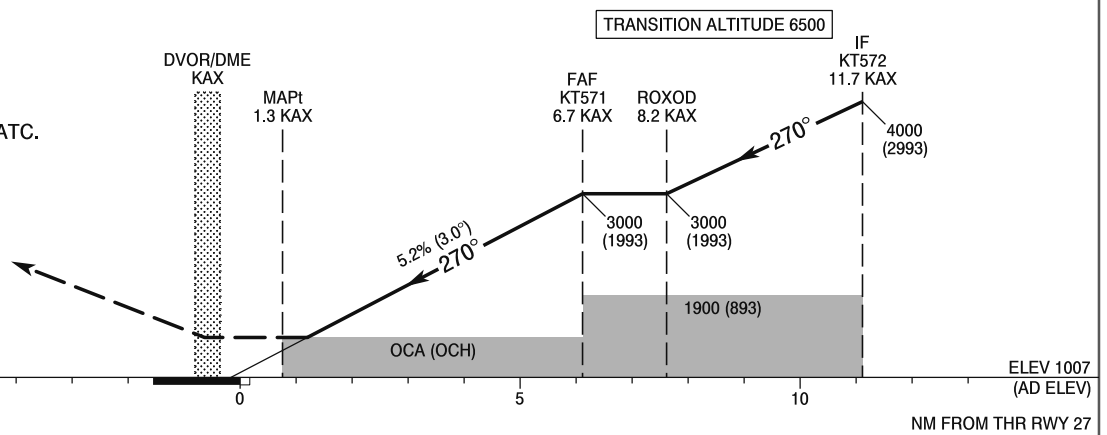
**Katowice - Pyrzowice
VOR
RWY 27 (CAT A/B/C/D)**



Correction: VAR.

MISSED APPROACH

Climb straight ahead to 11.2 NM DME KAX (KT581), then turn left on course 228° climbing to 4000 (2993). For further instructions contact ATC.



SCALE 1 : 250 000

NM FROM THR RWY 27

OCA (OCH)					Distance FAF - MAPt 5.4 NM							
Cat. of ACFT	A	B	C	D	Speed	kt	80	100	120	140	160	180
Straight-in	1440 (433)	1440 (433)	1440 (433)	1440 (433)	Time	min : s	4 : 01	3 : 13	2 : 41	2 : 18	2 : 00	1 : 47
					Rate of descent	ft / min	430	540	640	750	850	960
					Final approach distance/altitude (height)							
Circling*	1460 (453)	1610 (603)	1820 (813)	1840 (833)	Distance		6	5	4	3		
					Altitude (height)		2790 (1783)	2470 (1463)	2150 (1143)	1830 (823)		

*ACFT cat. D circling north of aerodrome only.

**INSTRUMENT
APPROACH
CHART - ICAO**

**Katowice - Pyrzowice
VOR
RWY 27 (CAT A/B/C/D)**

FIX / POINT	LATITUDE	LONGITUDE	FIX FORMATION	
IAF KT573	50°27'17.4"N	019°31'08.5"E	094.55° GEO (090° MAG) DVOR KAX	16.69 NM DME KAX
IF KT572	50°27'42.7"N	019°23'20.7"E	094.55° GEO (090° MAG) DVOR KAX	11.69 NM DME KAX
ROXOD	50°28'00.0"N	019°17'53.2"E	094.55° GEO (090° MAG) DVOR KAX	8.19 NM DME KAX
FAF KT 571	50°28'07.4"N	019°15'32.8"E	094.55° GEO (090° MAG) DVOR KAX	6.69 NM DME KAX
MAPt	50°28'33.3"N	019°07'11.5"E	094.55° GEO (090° MAG) DVOR KAX	1.34 NM DME KAX
KT581	50°29'31.5"N	018°47'37.3"E	274.54° GEO (270° MAG) DVOR KAX	11.20 NM DME KAX
Final approach descent angle: 3.00°				