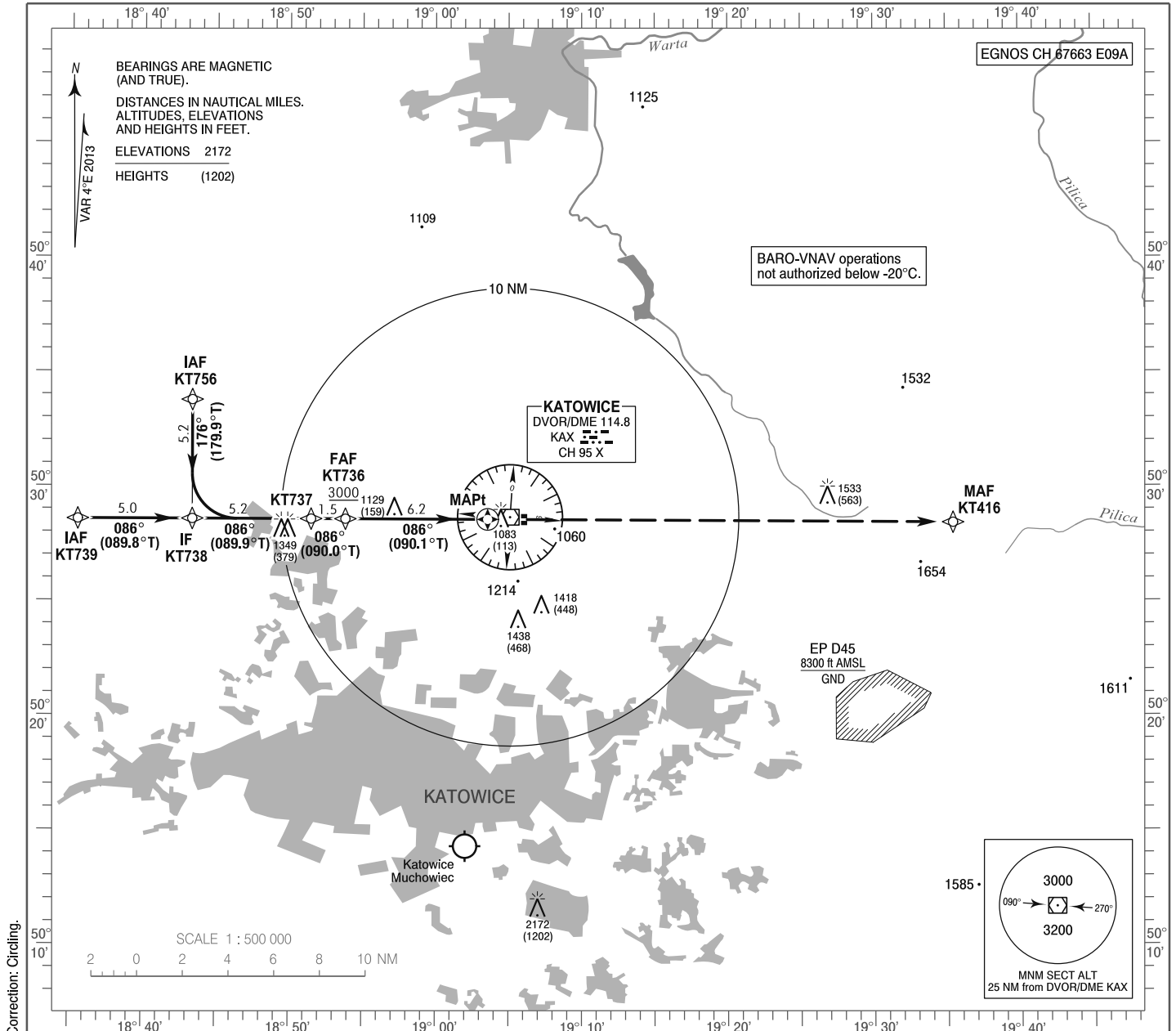


**INSTRUMENT  
APPROACH  
CHART - ICAO**

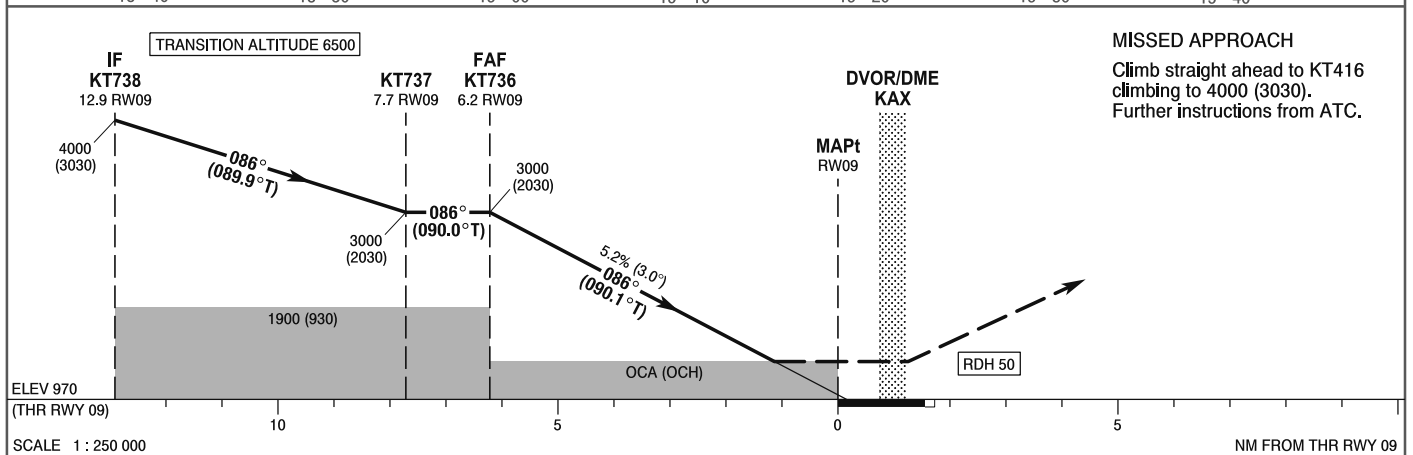
AERODROME ELEV 1007 ft  
THR RWY 09 ELEV 970 ft  
HEIGHTS RELATED TO THR 09

Kraków APPROACH 121.075, 135.400  
Katowice TOWER 129.250  
ATIS 120.225

**Katowice - Pyrzowice  
RNAV (GNSS)  
RWY 09 (CAT A/B/C/D)**



Correction: Circling.



OCA (OCH)					Distance FAF - MAPt 6.2								
Cat. of ACFT		A	B	C	D	Speed	kt	80	100	120	140	160	180
		Straight - in	LNAV	1380 (410)	1380 (410)	1380 (410)	1380 (410)	Time	min : s	4 : 40	3 : 44	3 : 07	2 : 40
LNAV / VNAV	1220 (250)		1230 (260)	1240 (270)	1250 (280)	Rate of descent	ft / min	425	531	637	743	849	955
LPV	1213 (243)		1225 (255)	1233 (263)	1244 (274)	Final approach distance/altitude (height)							
Circling (OCH AAL)*		1460 (453)	1610 (603)	1820 (813)	1840 (833)	Distance	6	5	4	3	2		
*ACFT cat. D circling north of aerodrome only.						Altitude (height)	2940 (1970)	2620 (1650)	2300 (1330)	1980 (1010)	1660 (690)		