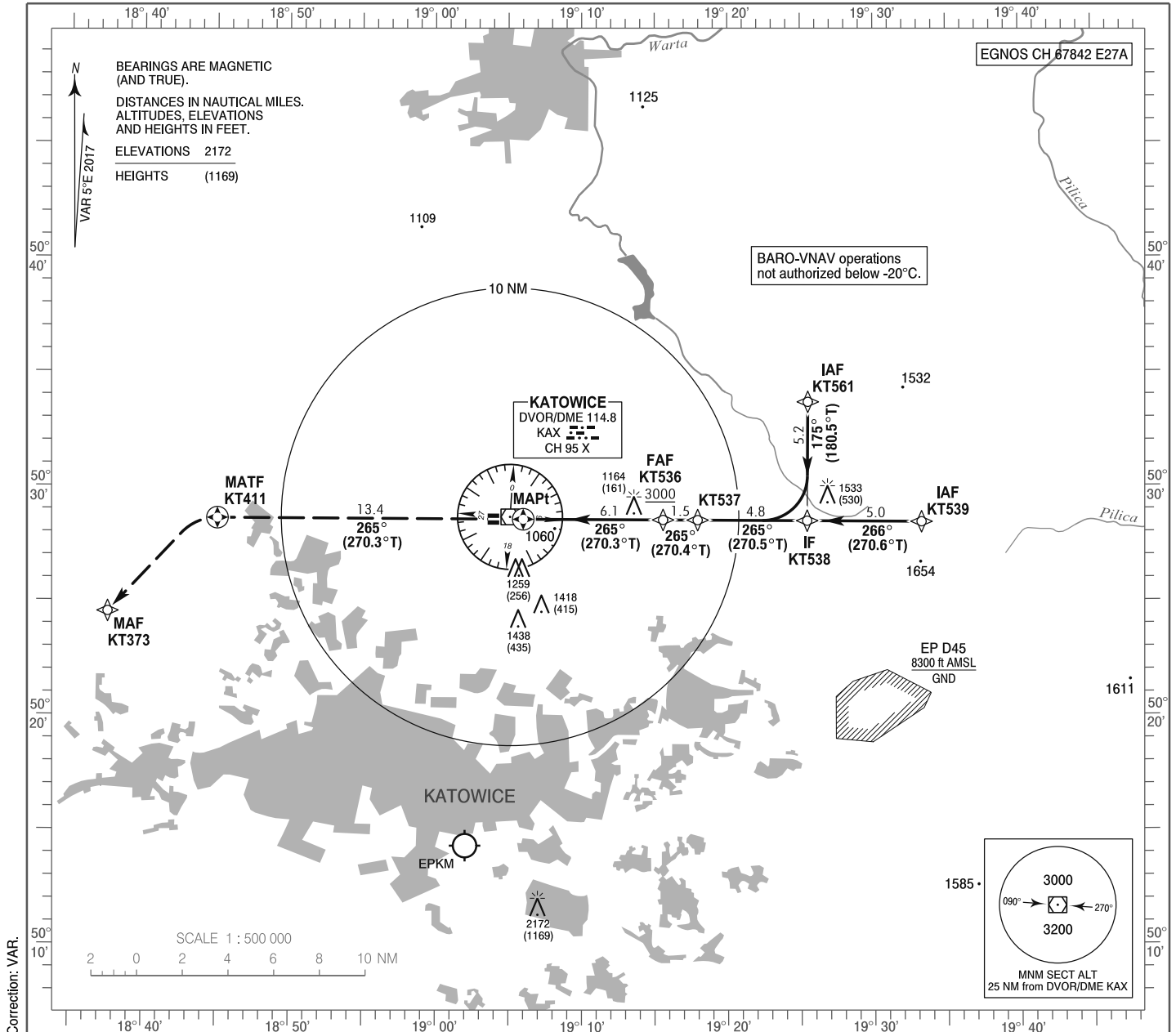


**INSTRUMENT
APPROACH
CHART - ICAO**

AERODROME ELEV 1007 ft
THR RWY 27 ELEV 1003 ft
HEIGHTS RELATED TO THR RWY 27

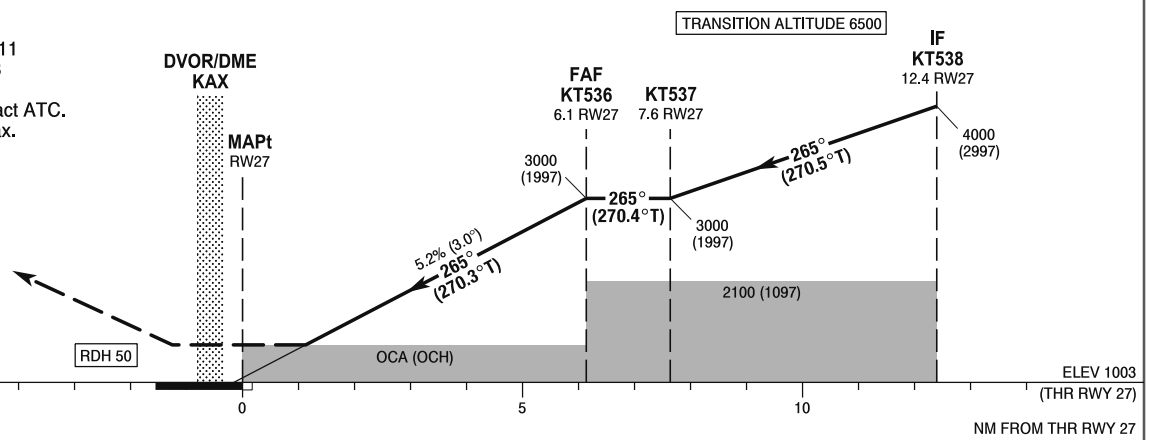
Kraków APPROACH 121.075, 135.400
Katowice TOWER 129.250
ATIS 120.225

**Katowice - Pyrzowice
RNAV (GNSS)
RWY 27 (CAT A/B/C/D)**



MISSED APPROACH

Climb straight ahead to KT411 then turn left direct to KT373 climbing to 4000 (2997). For further instructions contact ATC. Turn limited to 185 kt IAS max.



NM FROM THR RWY 27

OCA (OCH)					Distance FAF - MAPt 6.1								
Cat. of ACFT		A	B	C	D	Speed	kt	80	100	120	140	160	180
		Straight - in	LNAV	1410 (407)	1410 (407)	1410 (407)	1410 (407)	Time	min : s	4 : 35	3 : 40	3 : 03	2 : 37
LNAV / VNAV	1260 (257)		1260 (257)	1260 (257)	1270 (267)	Rate of descent	ft / min	425	531	637	743	849	955
LPV	1222 (219)		1234 (231)	1242 (239)	1253 (250)	Final approach distance/altitude (height)							
Circling (OCH AAL)*		1460 (453)	1610 (603)	1820 (813)	1840 (833)	Distance		6	5	4	3	2	
*ACFT cat. D circling north of aerodrome only.						Altitude (height)		2970 (1967)	2650 (1647)	2330 (1327)	2010 (1007)	1700 (697)	