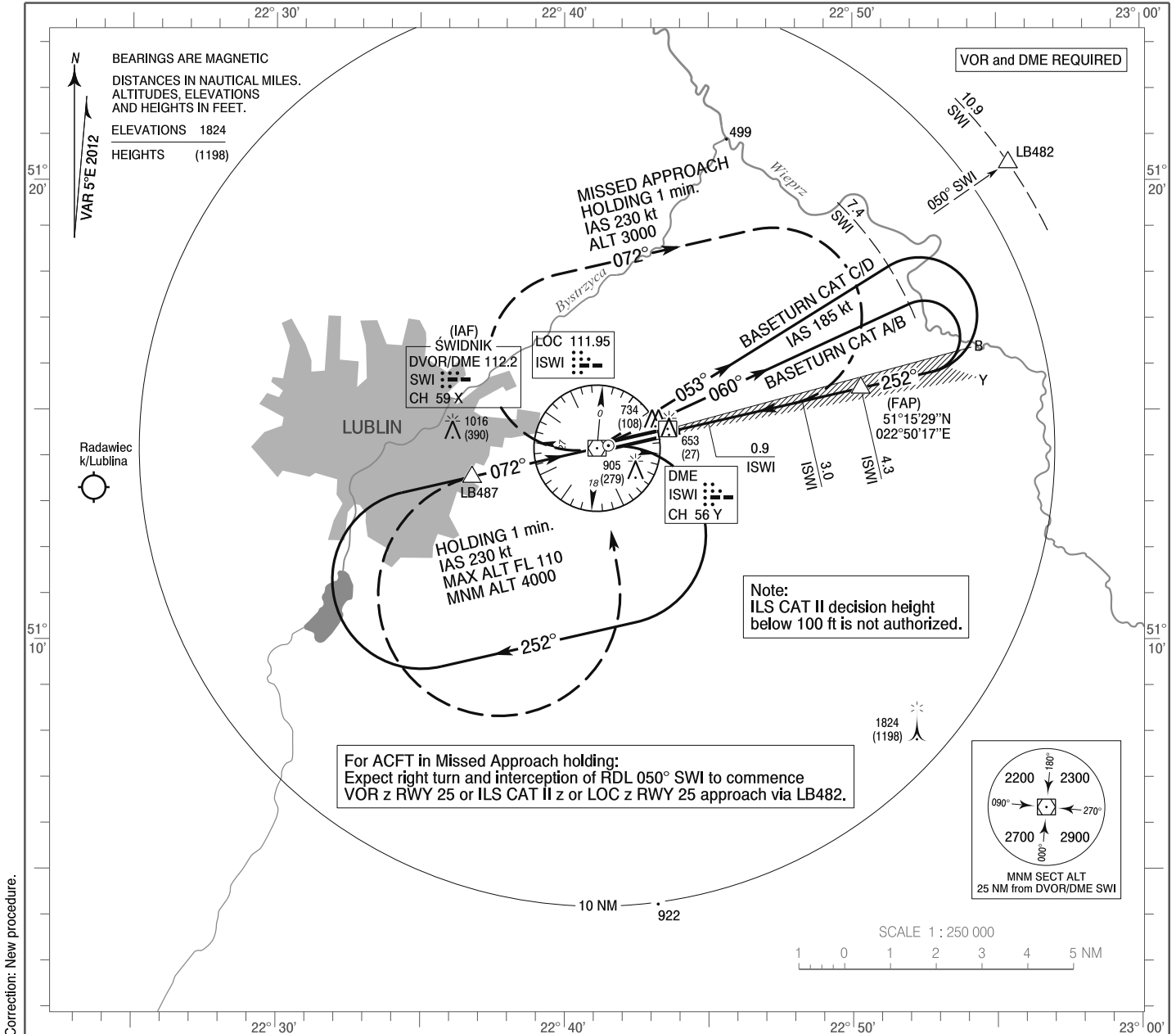


**INSTRUMENT
APPROACH
CHART - ICAO**

AERODROME ELEV 633 ft
THR RWY 25 ELEV 626 ft
HEIGHTS RELATED TO THR RWY 25

Lublin TOWER 136.425

**Lublin
ILS CAT II y or LOC y
RWY 25 (CAT A/B/C/D)**

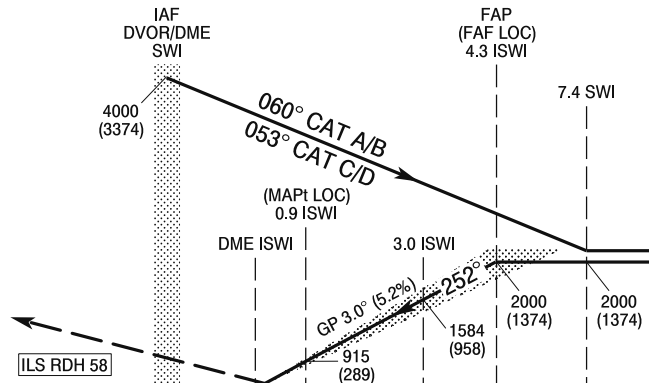


Correction: New procedure.

MISSED APPROACH

Climb straight ahead to LB487 then turn left to DVOR/DME SWI and join Missed Approach holding at SWI climbing to 3000 (2374). Turn limited to 210 kt IAS max.

TRANSITION ALTITUDE 6500



ELEV 626 (THR RWY 25)
SCALE 1 : 250 000
NM FROM THR RWY 25

OCA (OCH)					Distance FAF - MAPt 3.4 NM								
Cat. of ACFT		A	B	C	D	Speed	kt						
		Straight-in	Cat. I	864 (238)	876 (250)	884 (258)	895 (269)	Time	min : s	80	100	120	140
Cat. II	695 (69)		712 (86)	724 (98)	738 (112)	Rate of descent	ft / min	430	540	640	740	850	960
LOC	960 (334)		960 (334)	960 (334)	960 (334)			Final approach distance/altitude (height)					
Circling (OCH AAL)*		1200 (567)	1200 (567)	1410 (777)	1410 (777)	Distance	4	3	2	1			
*Circling south of aerodrome only						Altitude (height)	1900 (1274)	1580 (954)	1260 (634)	940 (314)			

**INSTRUMENT
APPROACH
CHART - ICAO**

Lublin
ILS CAT II y or LOC y
RWY 25 (CAT A/B/C/D)

FIX / POINT	LATITUDE	LONGITUDE	FIX FORMATION	
IAF DVOR/DME SWI	51°14'10.2"N	022°41'07.7"E		
FAP (FAF LOC)	51°15'28.6"N	022°50'16.8"E	257.23° GEO (252° MAG) LOC ISWI	4.31 NM DME ISWI
MAPt (LOC)	51°14'43.3"N	022°44'59.7"E	257.17° GEO (252° MAG) LOC ISWI	0.90 NM DME ISWI
LB487	51°13'32.6"N	022°36'47.3"E	257.08° GEO (252° MAG) DVOR SWI	2.80 NM DME SWI
Final approach descent angle: 3.00°				