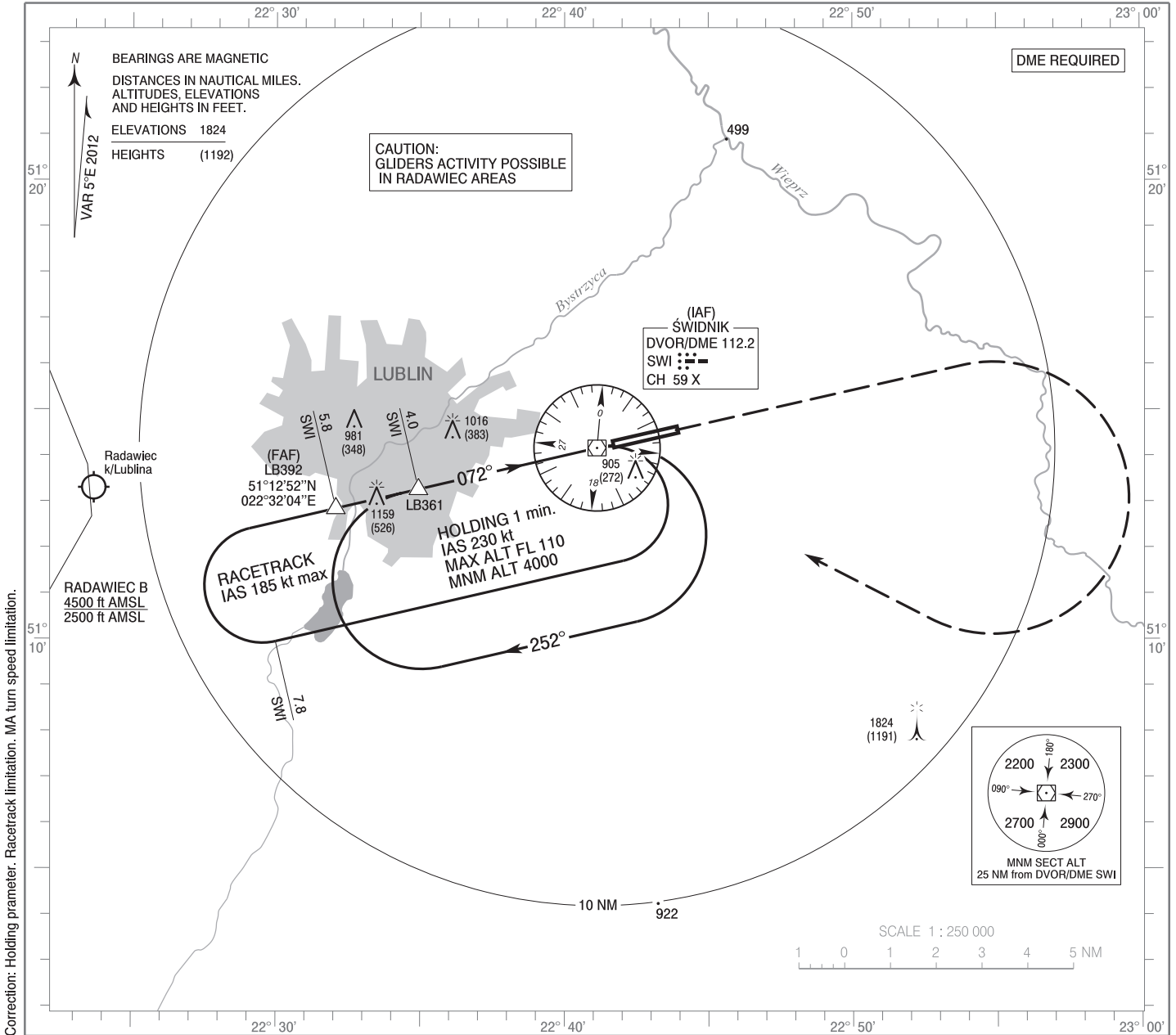


**INSTRUMENT
APPROACH
CHART - ICAO**

AERODROME ELEV 633 ft
THR RWY 07 ELEV 632 ft
HEIGHTS RELATED TO AD ELEV

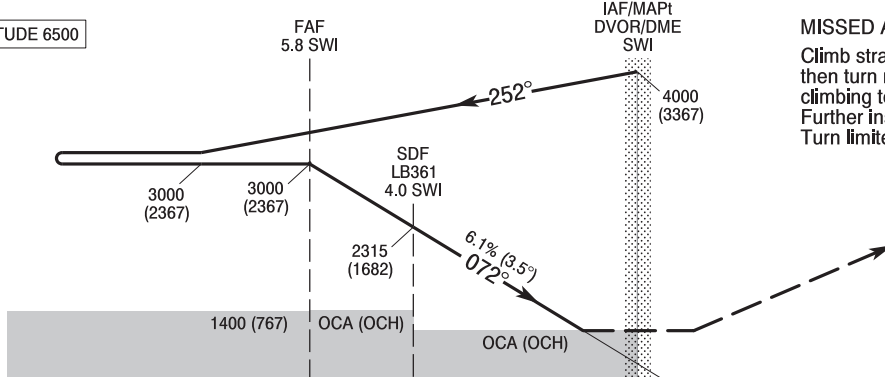
Lublin TOWER 136.425

**Lublin
VOR y
RWY 07 (CAT A/B/C/D)**



Correction: Holding parameter. Racetrack limitation. MA turn speed limitation.

TRANSITION ALTITUDE 6500



MISSED APPROACH

Climb straight ahead to 2500 (1867), then turn right and return to DVOR/DME SWI climbing to 4000 (3367). Further instructions from ATC. Turn limited to 220 kt IAS max.

ELEV 633
(AD ELEV)

SCALE 1 : 250 000

NM FROM THR RWY 07

OCA (OCH)					Distance FAF - MAPt 5.8 NM							
Cat. of ACFT	A	B	C	D	Speed	kt	80	100	120	140	160	180
Straight - in	1190 (557)	1190 (557)	1190 (557)	1190 (557)	Time	min : s	4 : 23	3 : 31	2 : 55	2 : 30	2 : 12	1 : 57
	When stepdown fix not received				Rate of descent	ft / min	490	620	740	870	990	1110
Circling*	1410 (777)	1410 (777)	1410 (777)	1410 (777)	Final approach distance/altitude (height)							
	1410 (777)	1410 (777)	1410 (777)	1410 (777)	Distance	5	4	3	2	1		
*Circling south of aerodrome only					Altitude (height)	2690 (2057)	2320 (1687)	1950 (1317)	1580 (947)	1210 (577)		

**INSTRUMENT
APPROACH
CHART - ICAO**

LUBLIN
VOR y
RWY 07 (CAT A/B/C/D)

FIX / POINT	LATITUDE	LONGITUDE	FIX FORMATION	
IAF DVOR/DME SWI	51°14'10.2"N	022°41'07.7"E		
FAF LB392	51°12'51.7"N	022°32'03.7"E	257.13° GEO (252° MAG) DVOR SWI	5.85 NM DME SWI
SDF LB361	51°13'16.5"N	022°34'55.8"E	257.12° GEO (252° MAG) DVOR SWI	4.00 NM DME SWI
MAPt DVOR/DME SWI	51°14'10.2"N	022°41'07.7"E		
Final approach descent angle: 3.50°				