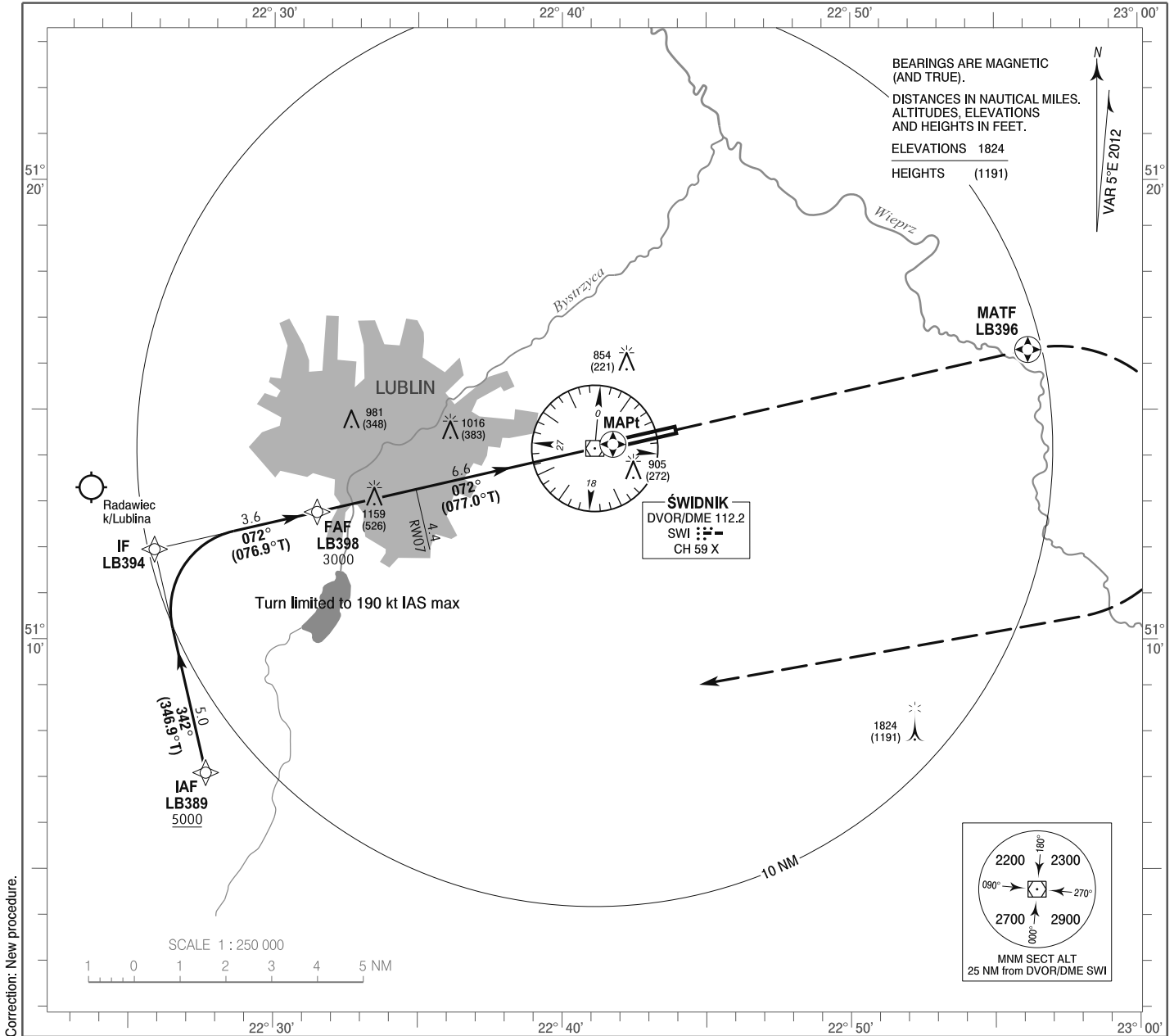


**INSTRUMENT  
APPROACH  
CHART - ICAO**

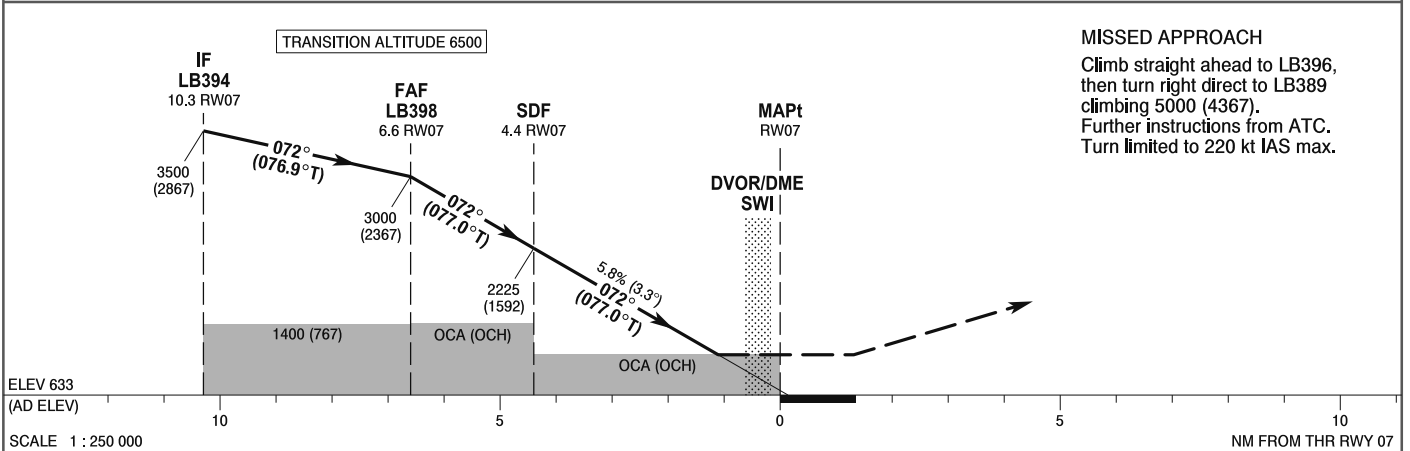
AERODROME ELEV 633 ft  
THR RWY 07 ELEV 632 ft  
HEIGHTS RELATED TO AD ELEV

Lublin TOWER 136.425

**Lublin**  
**RNAV (GNSS)**  
**RWY 07 (CAT A/B/C/D)**



Correction: New procedure.



**MISSED APPROACH**  
Climb straight ahead to LB396, then turn right direct to LB389 climbing 5000 (4367). Further instructions from ATC. Turn limited to 220 kt IAS max.

|                                   |                   | OCA (OCH)     |            |            |                 | Distance FAF - MAPt 6.6                   |             |             |             |             |            |        |        |
|-----------------------------------|-------------------|---------------|------------|------------|-----------------|---|-------------|-------------|-------------|-------------|------------|--------|--------|
| Cat. of ACFT                      | LNAV              | A             | B          | C          | D               | Speed                                     | kt          | 80          | 100         | 120         | 140        | 160    | 180    |
|                                   |                   | Straight - in |            | 1070 (437) | 1070 (437)      | 1070 (437)                                | 1070 (437)  | Time        | min : s     | 4 : 58      | 3 : 58     | 3 : 10 | 2 : 50 |
|                                   | SDF not available |               |            |            | Rate of descent | ft / min                                  | 470         | 590         | 710         | 820         | 940        | 1060   |        |
|                                   |                   | 1410 (777)    | 1410 (777) | 1410 (777) | 1410 (777)      | Final approach distance/altitude (height) |             |             |             |             |            |        |        |
| Circling*                         |                   | 1410 (777)    | 1410 (777) | 1410 (777) | 1410 (777)      | Distance                                  | 6           | 5           | 4           | 3           | 2          |        |        |
| *Circling south of aerodrome only |                   |               |            |            |                 | Altitude (height)                         | 2800 (2167) | 2450 (1817) | 2100 (1467) | 1730 (1097) | 1380 (747) |        |        |