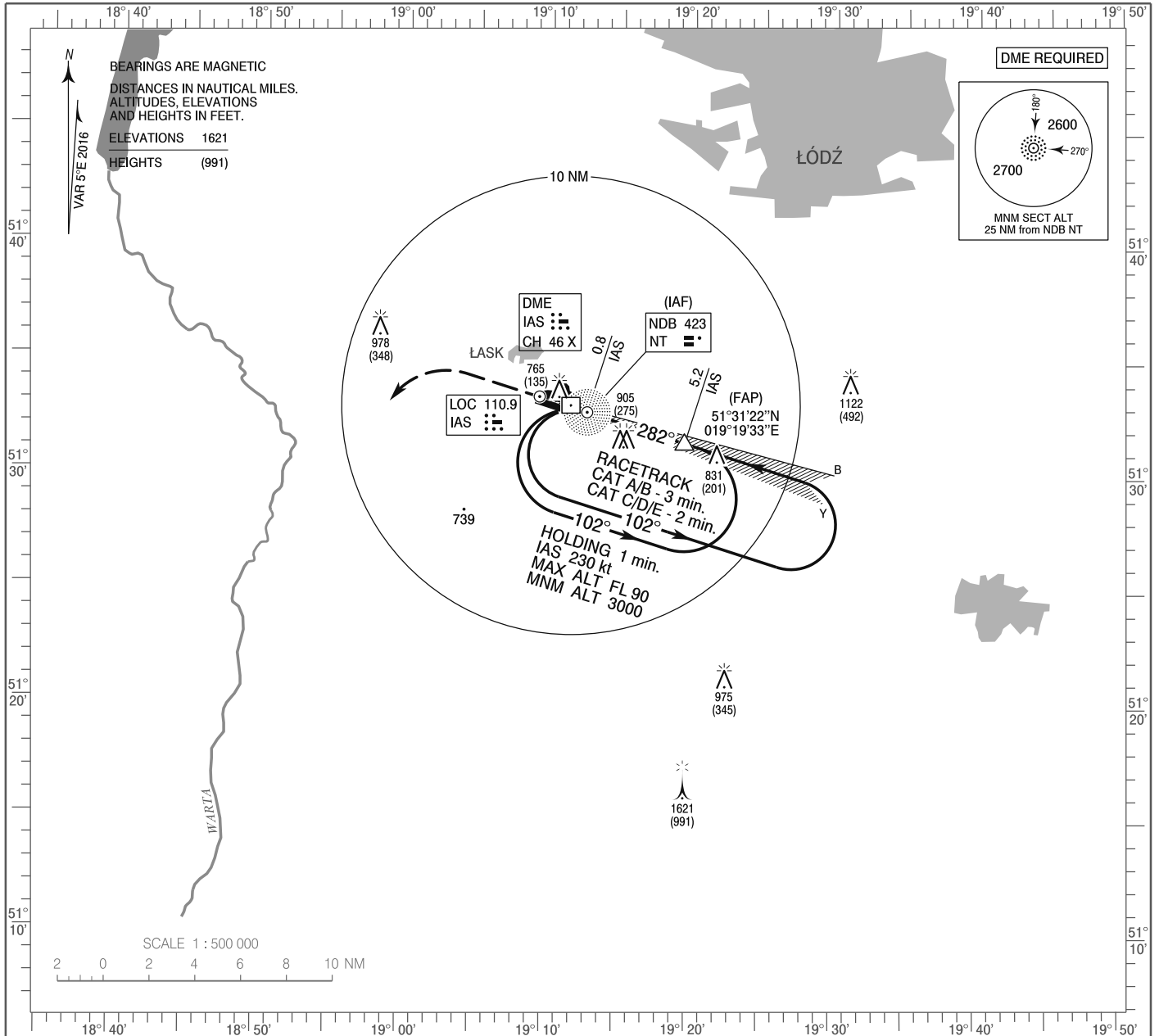


**INSTRUMENT
APPROACH
CHART - ICAO**

AERODROME ELEV 640 ft
THR RWY 28 ELEV 630 ft
HEIGHTS RELATED TO THR RWY 28

Łask APPROACH 125.350
Łask TOWER 133.075
ATIS 306.775

ŁASK
ILS z or LOC z
RWY 28 (CAT A/B/C/D/E)

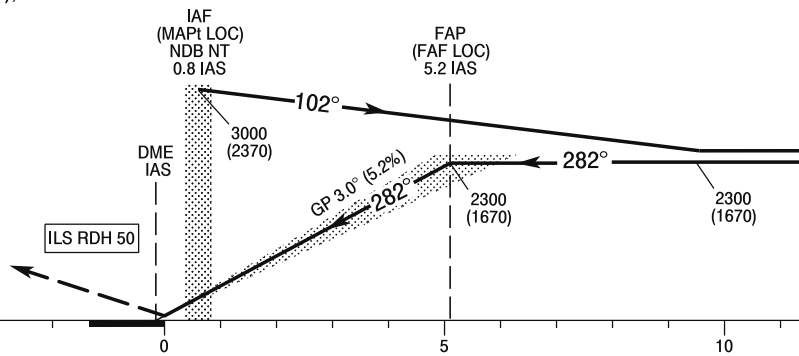


Correction: MSA.

MISSED APPROACH

Climb straight ahead to 1700 (1070),
then turn left to NDB NT
climbing to 3000 (2370)
and follow ATC instructions.

TRANSITION ALTITUDE 6500



ELEV 630
(THR RWY 28)

SCALE 1 : 250 000

NM FROM THR RWY 28

Cat. of ACFT	OCA (OCH)					Speed	kt	Distance FAF - MAPt 4.5 NM						
	A	B	C	D	E			70	100	135	170	200	230	
Straight - in	Cat. I	870 (240)	880 (250)	890 (260)	900 (270)	920 (290)	Time	min : s	3 : 44	2 : 37	2 : 01	1 : 32	1 : 18	1 : 08
	LOC	1150 (520)	1150 (520)	1150 (520)	1150 (520)	1150 (520)	Rate of descent	ft / min	375	550	710	925	1080	1260
Circling* (OCH AAL)		1160 (520)	1160 (520)	1320 (680)	1320 (680)	1420 (780)								

*Circling south of the aerodrome only.

**INSTRUMENT
APPROACH
CHART - ICAO**

ŁASK
ILS z or LOC z
RWY 28 (CAT A/B/C/D/E)

FIX / POINT	LATITUDE	LONGITUDE	FIX FORMATION	
IAF NDB NT	51°32'43.0"N	019°12'42.4"E		
FAP (FAF LOC)	51°31'22.3"N	019°19'32.7"E	287.49° GEO (282° MAG) LOC IAS	5.24 NM DME IAS
MAPt (LOC)	51°32'43.0"N	019°12'42.4"E	287.38° GEO (282° MAG) LOC IAS	0.77 NM DME IAS
Final approach descent angle: 3.00°				