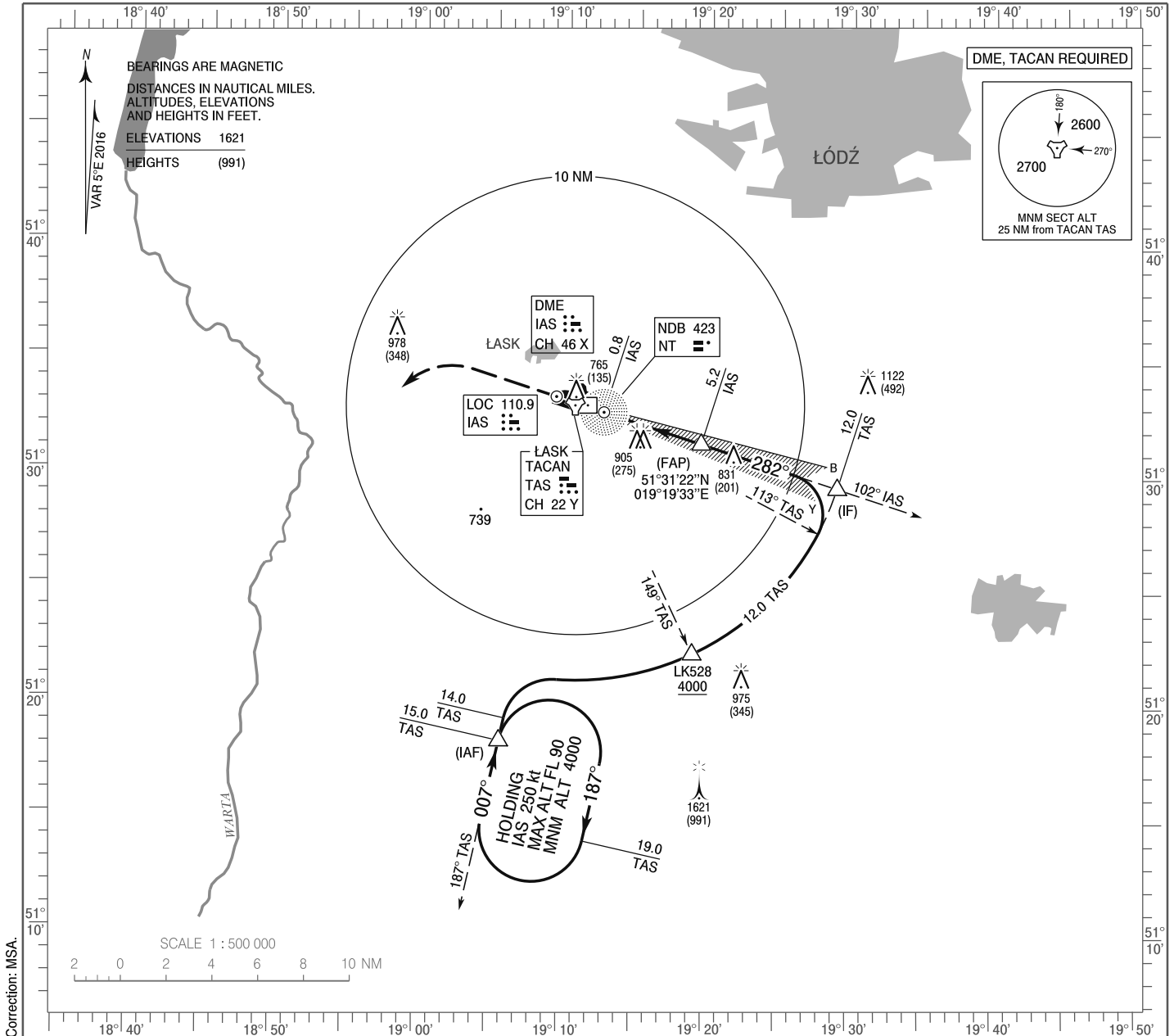


**INSTRUMENT  
APPROACH  
CHART - ICAO**

AERODROME ELEV 640 ft  
THR RWY 28 ELEV 630 ft  
HEIGHTS RELATED TO THR RWY 28

Łask APPROACH 125.350  
Łask TOWER 133.075  
ATIS 306.775

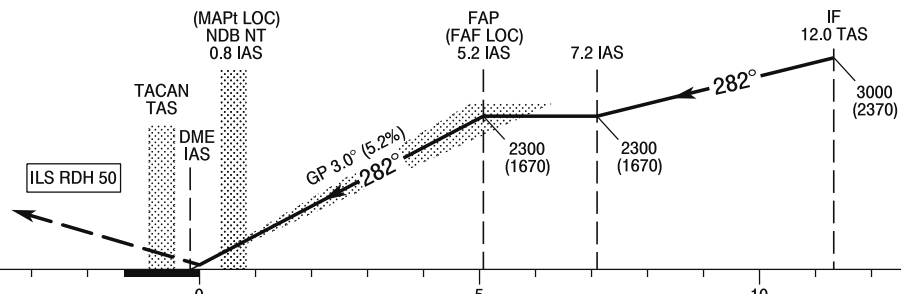
**ŁASK**  
**ILS y or LOC y**  
**RWY 28 (CAT A/B/C/D/E)**



**MISSED APPROACH**

Climb straight ahead to 1700 (1070), then turn left to intercept RDL 187° TAS climbing to 4000 (3370) to 15 NM TAS (IAF) or follow ATC instructions.

TRANSITION ALTITUDE 6500



ELEV 630  
(THR RWY 28)

SCALE 1 : 250 000

NM FROM THR RWY 28

Cat. of ACFT	OCA (OCH)					Speed	kt	Distance FAF - MAPt 4.5 NM						
	A	B	C	D	E			70	100	135	170	200	230	
Straight - in	Cat. I	870 (240)	880 (250)	890 (260)	900 (270)	920 (290)	Time	min : s	3 : 44	2 : 37	2 : 01	1 : 32	1 : 18	1 : 08
	LOC	1150 (520)	1150 (520)	1150 (520)	1150 (520)	1150 (520)	Rate of descent	ft / min	375	550	710	925	1080	1260
Circling* (OCH AAL)		1160 (520)	1160 (520)	1320 (680)	1320 (680)	1420 (780)								

\*Circling south of the aerodrome only.

**INSTRUMENT  
APPROACH  
CHART - ICAO**

**ŁASK**  
ILS y or LOC y  
RWY 28 (CAT A/B/C/D/E)

FIX / POINT	LATITUDE	LONGITUDE	FIX FORMATION	
IAF	51°18'20.4"N	019°05'43.4"E	192.00° GEO (187° MAG) TACAN TAS	15.00 NM TACAN TAS
LK528	51°22'13.2"N	019°19'05.2"E	154.00° GEO (149° MAG) TACAN TAS	12.00 NM TACAN TAS
IF	51°29'29.3"N	019°29'03.8"E	287.49° GEO (282° MAG) LOC IAS	12.00 NM TACAN TAS
FAP (FAF LOC)	51°31'22.3"N	019°19'32.7"E	287.49° GEO (282° MAG) LOC IAS	5.24 NM DME IAS
MAPt (LOC)	51°32'43.0"N	019°12'42.4"E	287.38° GEO (282° MAG) LOC IAS	0.77 NM DME IAS
Final approach descent angle: 3.00°				