

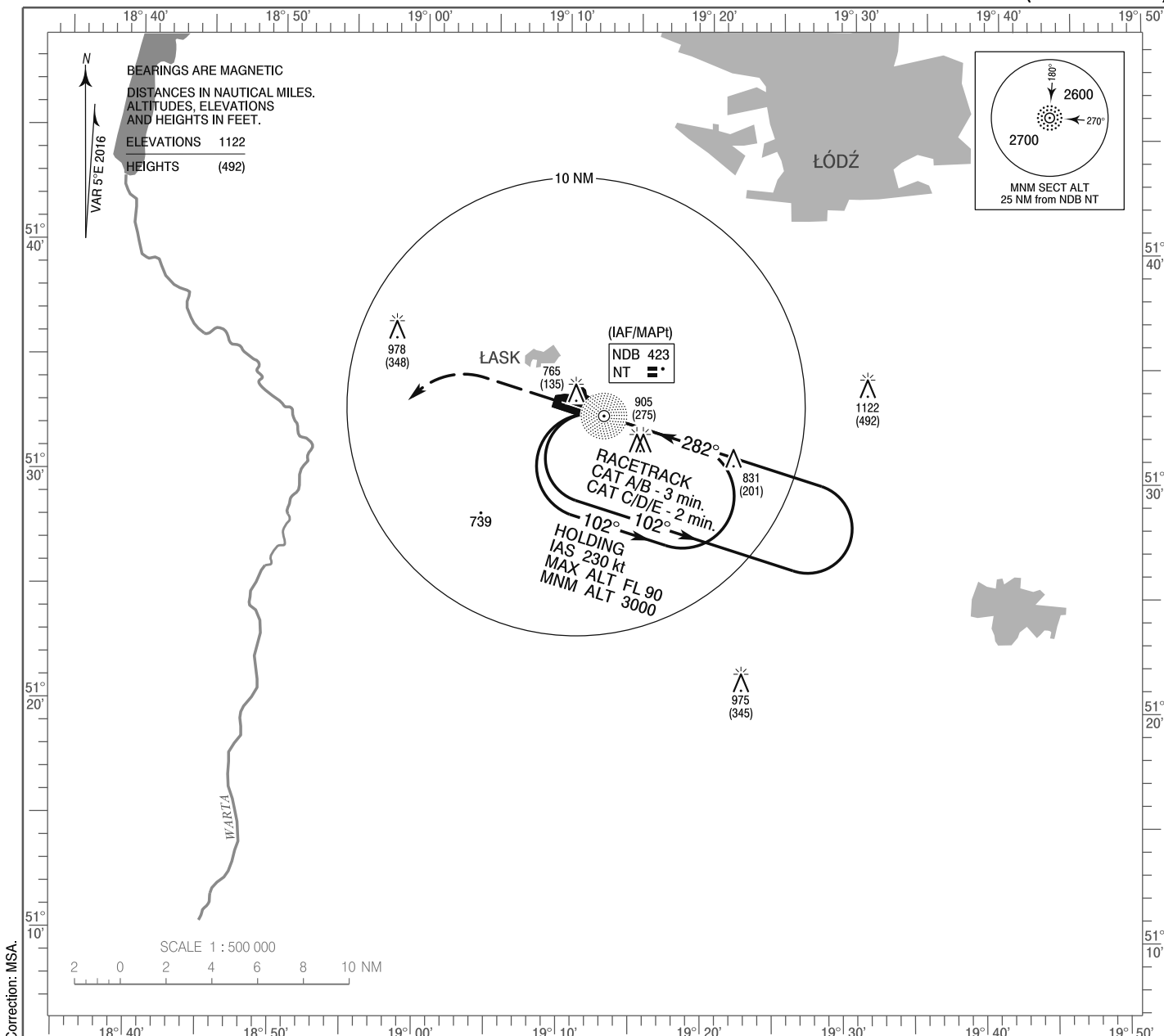
**INSTRUMENT  
APPROACH  
CHART - ICAO**

AERODROME ELEV 640 ft  
THR RWY 28 ELEV 630 ft  
HEIGHTS RELATED TO THR RWY 28

Łask APPROACH 125.350  
Łask TOWER 133.075  
ATIS 306.775

**ŁASK  
NDB**

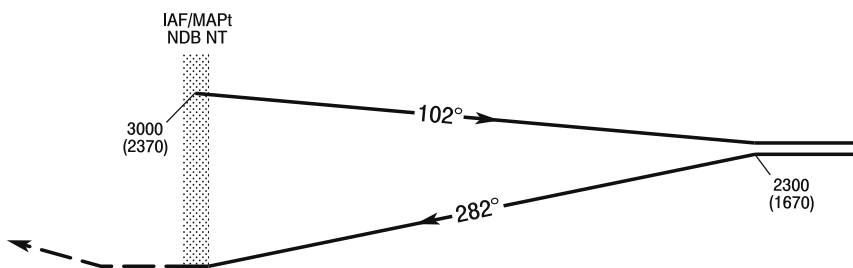
**RWY 28 (CAT A/B/C/D/E)**



**MISSED APPROACH**

Climb straight ahead to 1700 (1070),  
then turn left to NDB NT  
climbing to 3000 (2370)  
and follow ATC instructions.

TRANSITION ALTITUDE 6500



ELEV 630  
(THR RWY 28)

SCALE 1 : 250 000

NM FROM THR RWY 28

OCA (OCH)					
Cat. of ACFT	A	B	C	D	E
Straight - in	1200 (570)	1200 (570)	1200 (570)	1200 (570)	1200 (570)
Circling* (OCH AAL)	1210 (570)	1210 (570)	1320 (680)	1320 (680)	1420 (780)

\*Circling south of the aerodrome only.

**INSTRUMENT  
APPROACH  
CHART - ICAO**

**ŁASK  
NDB  
RWY 28 (CAT A/B/C/D/E)**

FIX / POINT	LATITUDE	LONGITUDE	FIX FORMATION	
IAF NDB NT	51°32'43.0"N	019°12'42.4"E		
MAPt NDB NT	51°32'43.0"N	019°12'42.4"E		