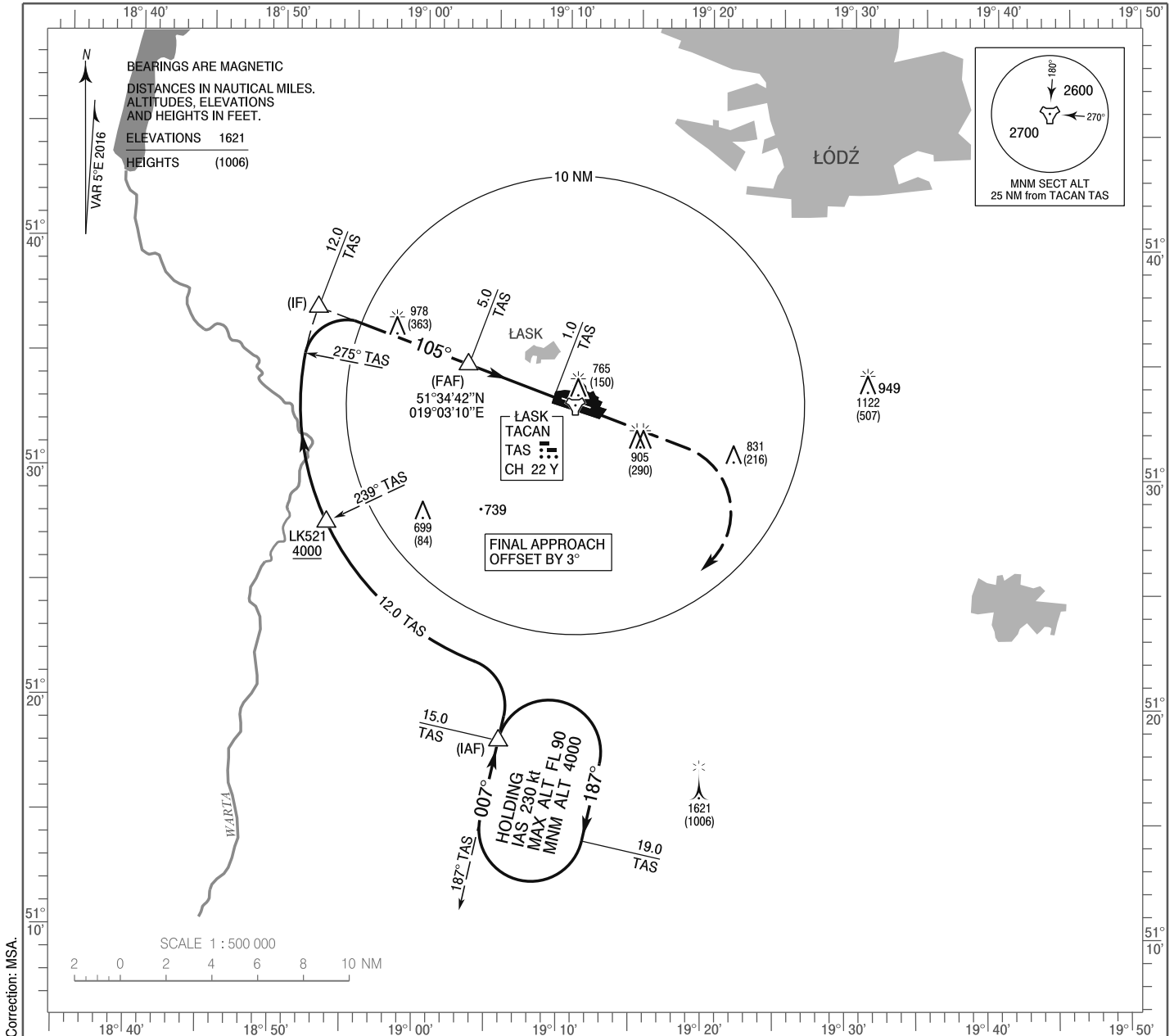


**INSTRUMENT  
APPROACH  
CHART - ICAO**

AERODROME ELEV 640 ft  
THR RWY 10 ELEV 615 ft  
HEIGHTS RELATED TO THR RWY 10

Lask APPROACH 125.350  
Lask TOWER 133.075  
ATIS 306.775

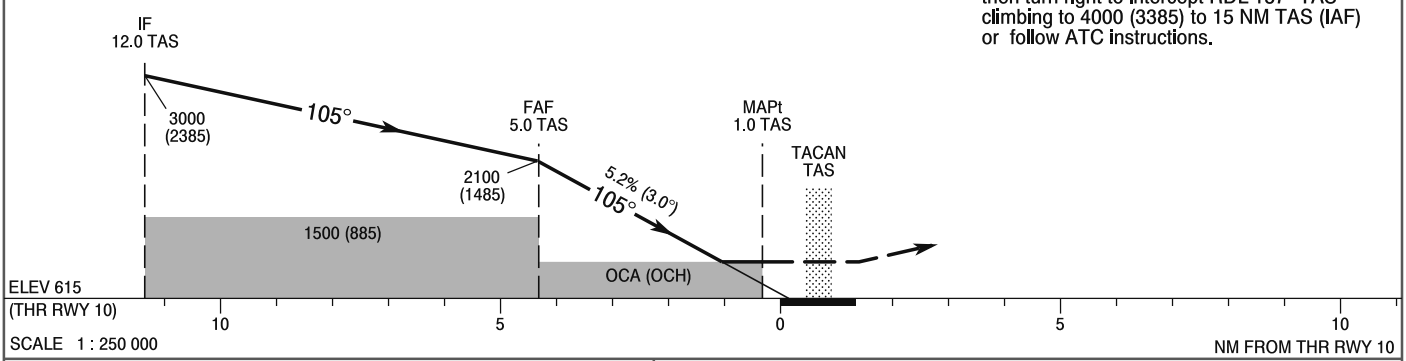
**ŁASK  
TACAN  
RWY 10 (CAT A/B/C/D/E)**



Correction: MSA.

TRANSITION ALTITUDE 6500

**MISSED APPROACH**  
Climb straight ahead to 1700 (1085), then turn right to intercept RDL 187° TAS climbing to 4000 (3385) to 15 NM TAS (IAF) or follow ATC instructions.



Cat. of ACFT	OCA (OCH)					Speed	kt	Distance FAF - MAPt 4.0 NM					
	A	B	C	D	E			75	100	135	170	200	230
Straight - in	1035 (420)	1035 (420)	1035 (420)	1035 (420)	1035 (420)	Time	min : s	3 : 11	2 : 23	1 : 46	1 : 24	1 : 11	1 : 02
						Rate of descent	ft / min	370	493	670	840	980	1140
Circling* (OCH AAL)	1160 (520)	1160 (520)	1320 (680)	1320 (680)	1420 (780)								

**INSTRUMENT  
APPROACH  
CHART - ICAO**

**ŁASK**  
**TACAN**  
**RWY 10 (CAT A/B/C/D/E)**

FIX / POINT	LATITUDE	LONGITUDE	FIX FORMATION	
IAF	51°18'20.4"N	019°05'43.4"E	192.00° GEO (187° MAG) TACAN TAS	15.00 NM TACAN TAS
LK521	51°27'43.3"N	018°53'26.9"E	244.00° GEO (239° MAG) TACAN TAS	12.00 NM TACAN TAS
IF	51°37'04.3"N	018°52'36.1"E	290.00° GEO (285° MAG) TACAN TAS	12.00 NM TACAN TAS
FAF	51°34'42.0"N	019°03'09.7"E	290.00° GEO (285° MAG) TACAN TAS	5.00 NM TACAN TAS
MAPt	51°33'20.2"N	019°09'11.2"E	290.00° GEO (285° MAG) TACAN TAS	1.00 NM TACAN TAS
Final approach descent angle: 3.00°				