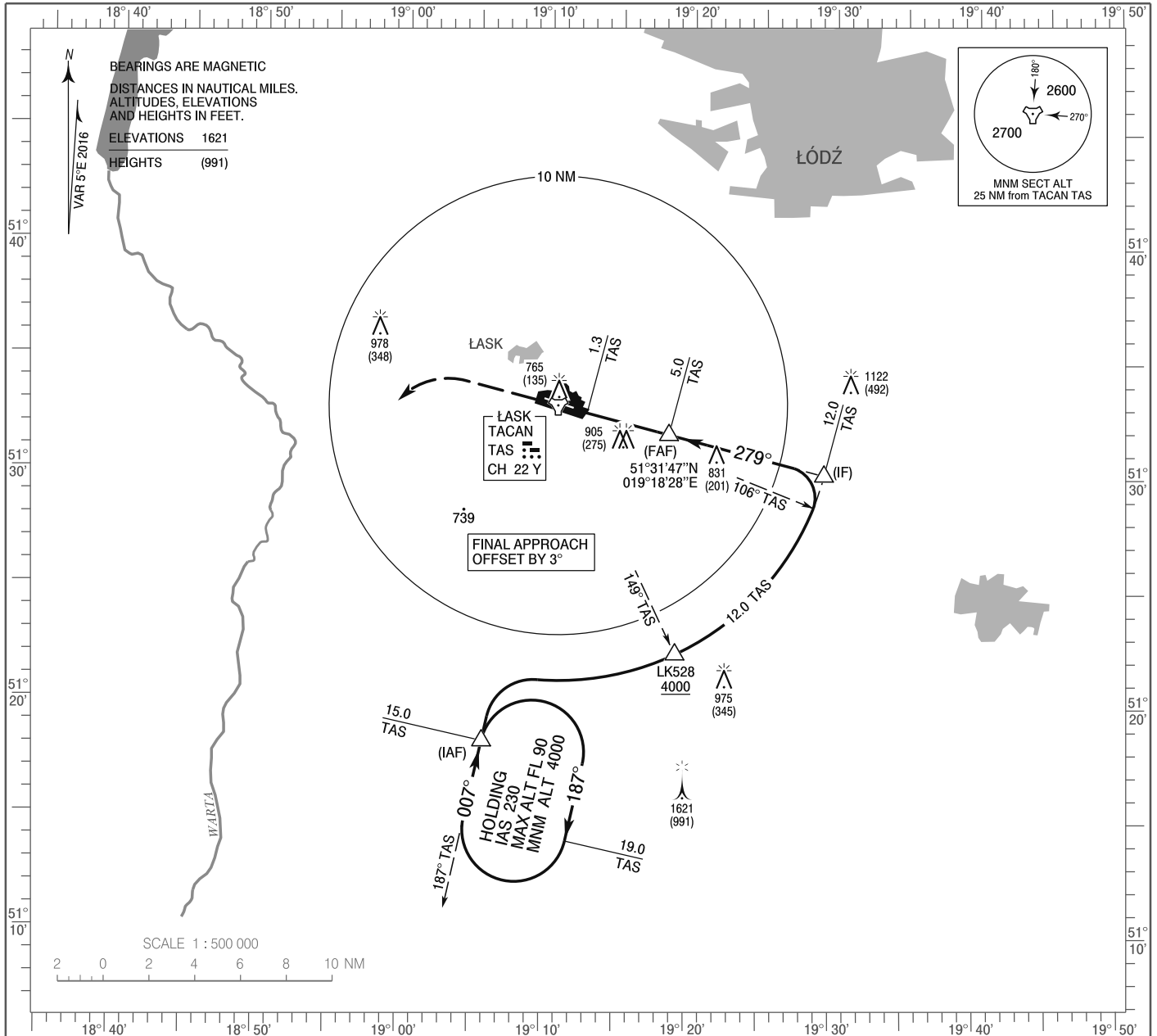


**INSTRUMENT
APPROACH
CHART - ICAO**

AERODROME ELEV 640 ft
THR RWY 28 ELEV 630 ft
HEIGHTS RELATED TO THR RWY 28

Lask APPROACH 125.350
Lask TOWER 133.075
ATIS 306.775

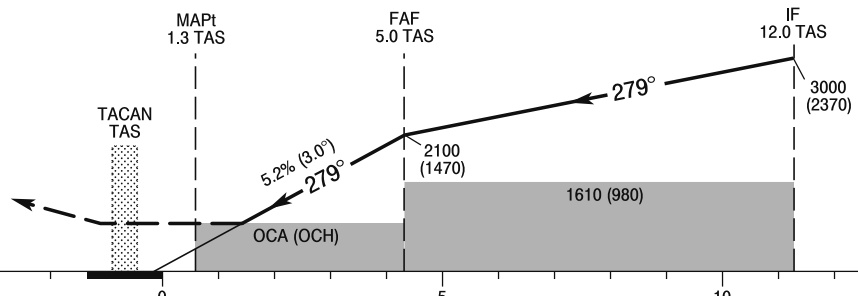
**ŁASK
TACAN
RWY 28 (CAT A/B/C/D/E)**



MISSED APPROACH

Climb straight ahead to 1700 (1070), then turn left to intercept RDL 187° TAS climbing to 4000 (3370) to 15 NM TAS (IAF) or follow ATC instructions.

TRANSITION ALTITUDE 6500



ELEV 630
(THR RWY 28)

SCALE 1 : 250 000

NM FROM THR RWY 28

OCA (OCH)						Distance FAF - MAPt 3.7 NM							
Cat. of ACFT	A	B	C	D	E	Speed	kt	75	100	135	170	200	230
Straight - in	1150 (520)	1150 (520)	1150 (520)	1150 (520)	1150 (520)	Time	min : s	2 : 57	2 : 13	1 : 38	1 : 18	1 : 06	0 : 57
						Rate of descent	ft / min	393	524	708	891	1049	1206
Circling* (OCH AAL)	1160 (520)	1160 (520)	1320 (680)	1320 (680)	1420 (780)								

*Circling south of the aerodrome only.

**INSTRUMENT
APPROACH
CHART - ICAO**

ŁASK
TACAN
RWY 28 (CAT A/B/C/D/E)

FIX / POINT	LATITUDE	LONGITUDE	FIX FORMATION	
IAF	51°18'20.4"N	019°05'43.4"E	192.00° GEO (187° MAG) TACAN TAS	15.00 NM TACAN TAS
LK528	51°22'13.2"N	019°19'05.2"E	154.00° GEO (149° MAG) TACAN TAS	12.00 NM TACAN TAS
IF	51°30'04.3"N	019°29'19.5"E	104.00° GEO (099° MAG) TACAN TAS	12.00 NM TACAN TAS
FAF	51°31'47.0"N	019°18'27.7"E	104.00° GEO (099° MAG) TACAN TAS	5.00 NM TACAN TAS
MAPt	51°32'40.9"N	019°12'42.8"E	104.00° GEO (099° MAG) TACAN TAS	1.30 NM TACAN TAS
Final approach descent angle: 3.00°				