

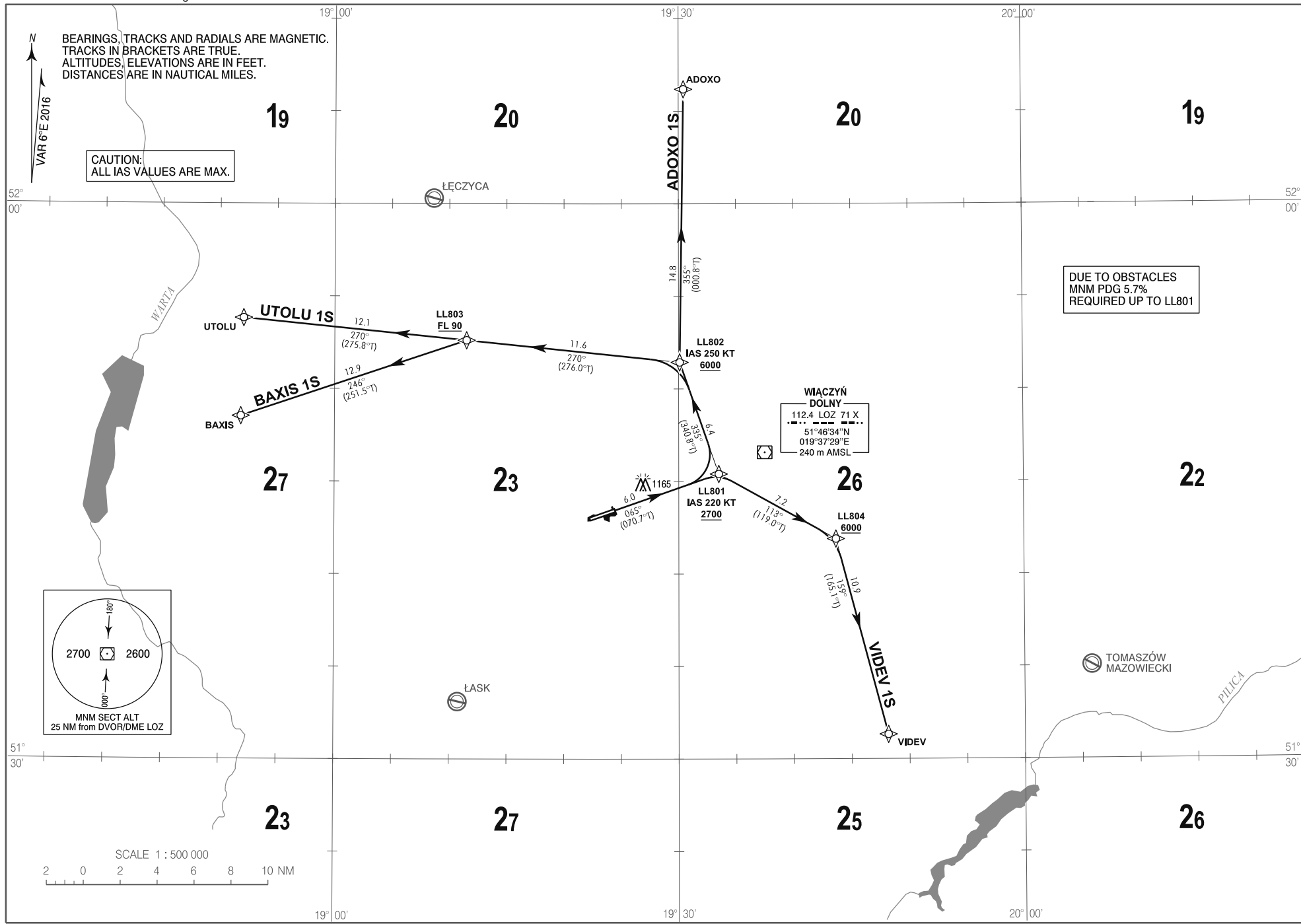
**RNP 1 (GNSS)
STANDARD DEPARTURE CHART
INSTRUMENT (SID) - ICAO**

TRANSITION ALTITUDE 6500

Łódź TOWER 124.225
ATIS 135.675

Łódź - Lublinek
Rwy 07

Correction: AMA. VAR. Editorial changes.



BEARINGS, TRACKS AND RADIALS ARE MAGNETIC.
TRACKS IN BRACKETS ARE TRUE.
ALTITUDES, ELEVATIONS ARE IN FEET.
DISTANCES ARE IN NAUTICAL MILES.

CAUTION:
ALL IAS VALUES ARE MAX.

DUE TO OBSTACLES
MNM PDG 5.7%
REQUIRED UP TO LL801

WACZYŃ DOLNY
112.4 LOZ 71 X
51°46'34\"/>

