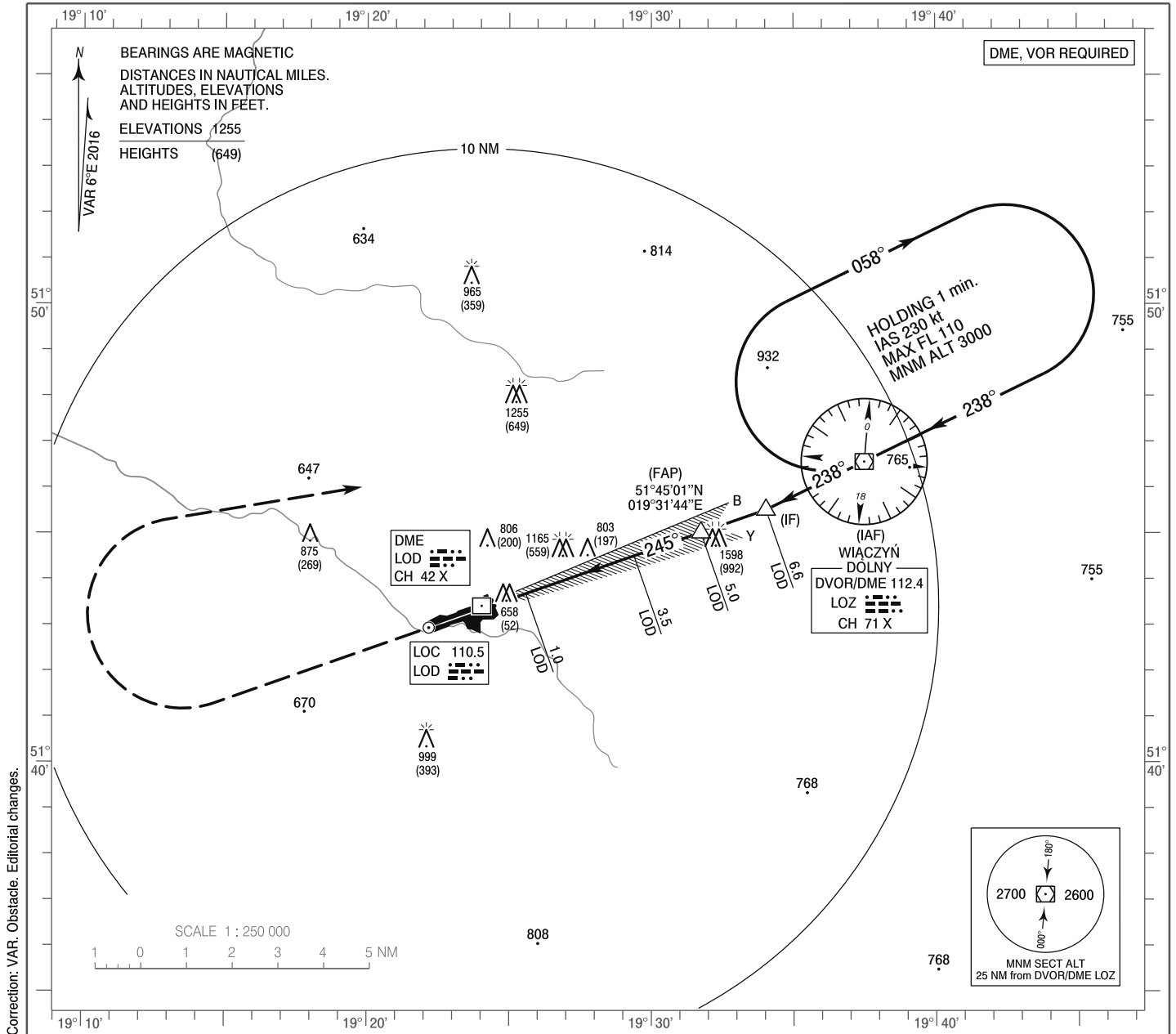


**INSTRUMENT
APPROACH
CHART - ICAO**

AERODROME ELEV 607 ft
THR RWY 25 ELEV 606 ft
HEIGHTS RELATED TO THR RWY 25

Łódź TOWER 124.225
ATIS 135.675

**Łódź - Lublinek
ILS or LOC
RWY 25 (CAT A/B/C/D)**

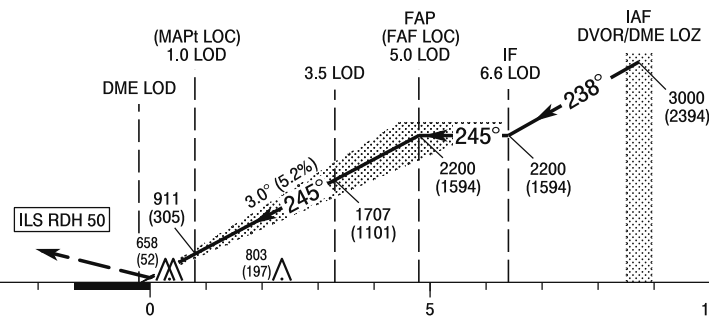


Correction: VAR. Obstacle. Editorial changes.

MISSED APPROACH

Climb straight ahead to 1500 (894),
turn right to DVOR/DME LOZ
climbing to 3000 (2394).
Further instructions from ATC.
Turn limited to 185 kt IAS max.

TRANSITION ALTITUDE 6500



ELEV 606
(THR RWY 25)

SCALE 1 : 250 000

NM FROM THR RWY 25

| OCA (OCH) | | | | | Distance FAF - MAPt 4.1 NM | | | | | | | | |
|---------------------|------------|---------------|------------|------------|----------------------------|---|-----------|-------------|-------------|------------|------------|--------|--------|
| Cat. of ACFT | | A | B | C | D | Speed | kt | 80 | 100 | 120 | 140 | 160 | 180 |
| | | Straight - in | Cat. I | 788 (182) | 800 (194) | 808 (202) | 819 (213) | Time | min : s | 3 : 02 | 2 : 26 | 2 : 02 | 1 : 44 |
| LOC | 1050 (444) | | 1050 (444) | 1050 (444) | 1050 (444) | Rate of descent | ft / min | 430 | 540 | 640 | 750 | 850 | 960 |
| Circling (OCH AAL)* | | 1110 (503) | 1470 (863) | 1570 (963) | 2000 (1393) | Final approach distance/altitude (height) | | | | | | | |
| | | | | | | Distance | | 5 | 4 | 3 | 2 | | |
| | | | | | | Altitude (height) | | 2190 (1584) | 1870 (1264) | 1550 (944) | 1230 (624) | | |

* ACFT cat C/D circling north of aerodrome only.

**INSTRUMENT
APPROACH
CHART - ICAO**

**Łódź - Lublinek
ILS or LOC
RWY 25 (CAT A/B/C/D)**

| FIX / POINT | LATITUDE | LONGITUDE | FIX FORMATION | |
|-------------------------------------|--------------|---------------|--------------------------------------|--------------------|
| IAF DVOR/DME LOZ | 51°46'33.9"N | 019°37'29.3"E | | |
| IF | 51°45'31.0"N | 019°34'01.8"E | 250.78° GEO (245° MAG) LOC LOD | 6.56 NM DME LOD |
| FAP (FAF LOC) | 51°45'01.2"N | 019°31'44.4"E | 250.75° GEO (245° MAG) LOC LOD | 5.05 NM DME LOD |
| MAPt (LOC) | 51°43'41.0"N | 019°25'35.4"E | 250.67° GEO (245° MAG) LOC LOD | 1.00 NM DME LOD |
| Final approach descent angle: 3.00° | | | | |