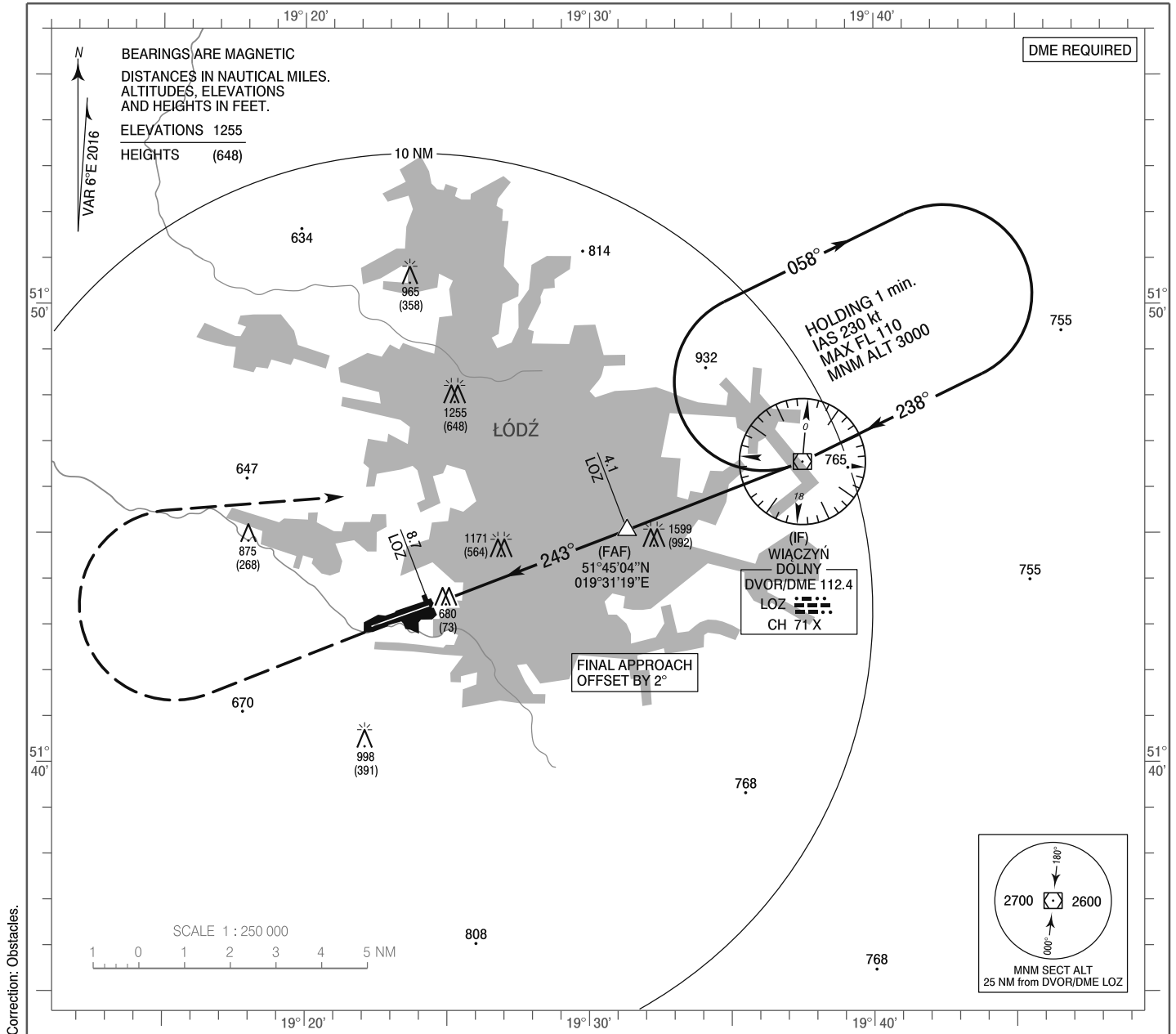


**INSTRUMENT
APPROACH
CHART - ICAO**

AERODROME ELEV 607 ft
THR RWY 25 ELEV 606 ft
HEIGHTS RELATED TO AD ELEV

Lódź TOWER 124.225
ATIS 135.675

**Lódź - Lublinek
VOR
RWY 25 (CAT A/B/C/D)**

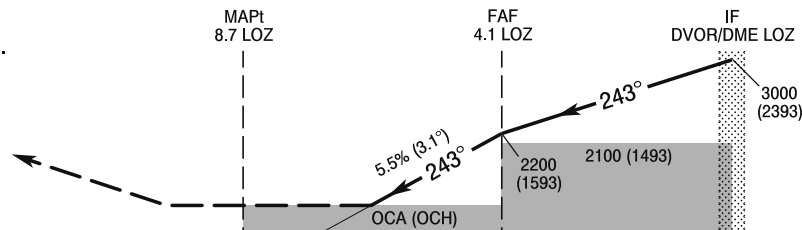


Correction: Obstacles.

MISSED APPROACH

Climb straight ahead to 2000 (1393),
turn right to DVOR/DME LOZ
climbing to 3000 (2393).
Further instructions from ATC.
Turn limited to 185 kt IAS max.

TRANSITION ALTITUDE 6500



ELEV 607
(AD ELEV)

SCALE 1 : 250 000

NM FROM THR RWY 25

OCA (OCH)					Distance FAF - MAPt 4.6 NM							
Cat. of ACFT	A	B	C	D	Speed	kt	80	100	120	140	160	180
Straight - in	1420 (813)	1420 (813)	1420 (813)	1420 (813)	Time	min : s	3 : 28	2 : 46	2 : 19	1 : 59	1 : 44	1 : 32
					Rate of descent	ft / min	450	560	670	780	900	1010
					Final approach distance/altitude (height)							
Circling *	1420 (813)	1470 (863)	1570 (963)	2000 (1393)	Distance		5		6			
* ACFT cat C/D circling north of aerodrome only.					Altitude (height)		1900 (1293)		1570 (963)			

**INSTRUMENT
APPROACH
CHART - ICAO**

**Łódź - Lublinek
VOR
RWY 25 (CAT A/B/C/D)**

FIX / POINT	LATITUDE	LONGITUDE	FIX FORMATION	
IF DVOR/DME LOZ	51°46'33.9"N	019°37'29.3"E		
FAF	51°45'04.5"N	019°31'19.0"E	248.78° GEO (243° MAG) DVOR LOZ	4.11 NM DME LOZ
MAPt	51°43'23.7"N	019°24'23.7"E	248.78° GEO (243° MAG) DVOR LOZ	8.73 NM DME LOZ
Final approach descent angle: 3.15°				