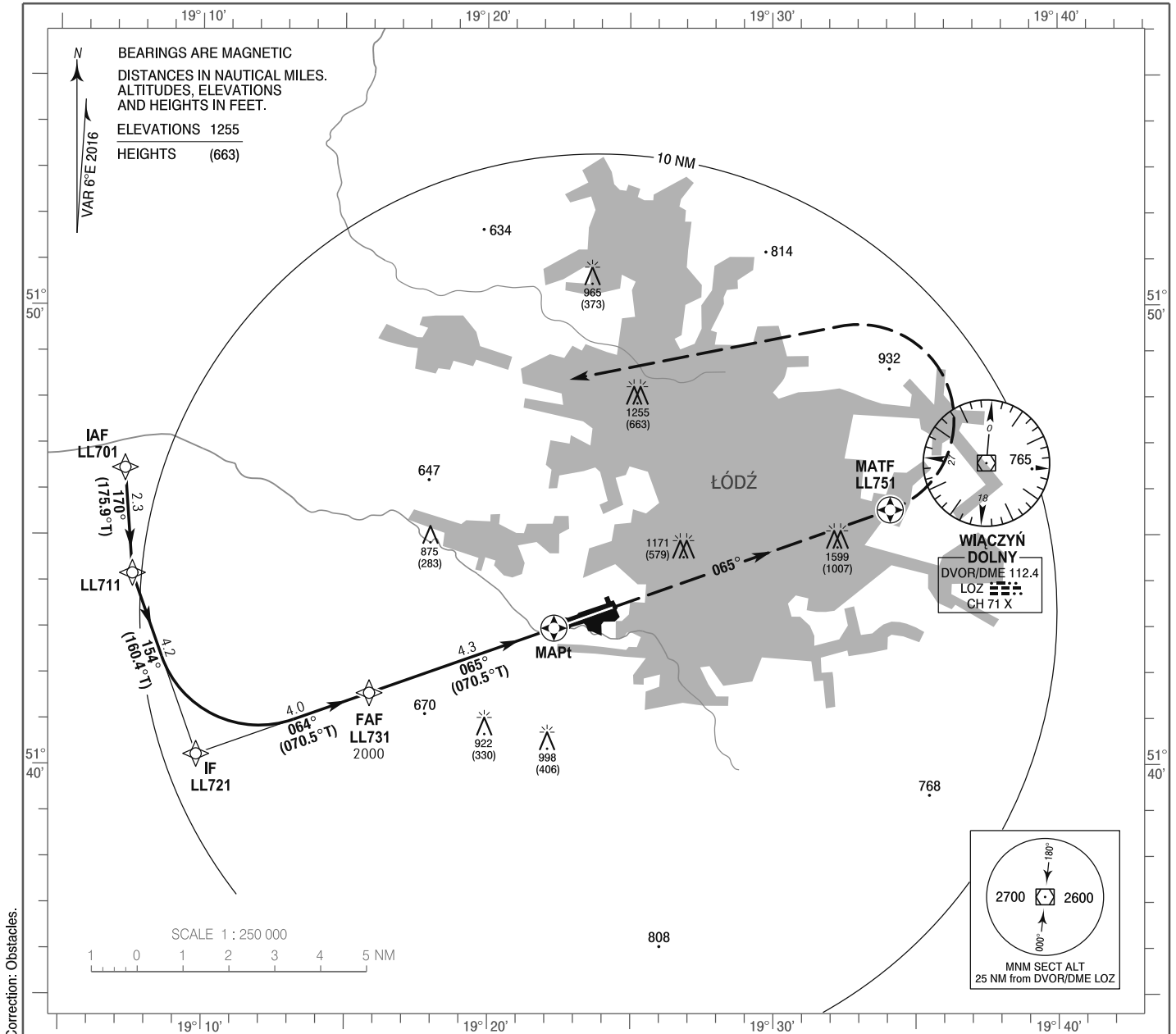


**INSTRUMENT
APPROACH
CHART - ICAO**

AERODROME ELEV 607 ft
THR RWY 07 ELEV 592 ft
HEIGHTS RELATED TO THR RWY 07

Łódź TOWER 124.225
ATIS 135.675

**Łódź - Lublinek
RNAV (GNSS)
RWY 07 (CAT A/B/C/D)**

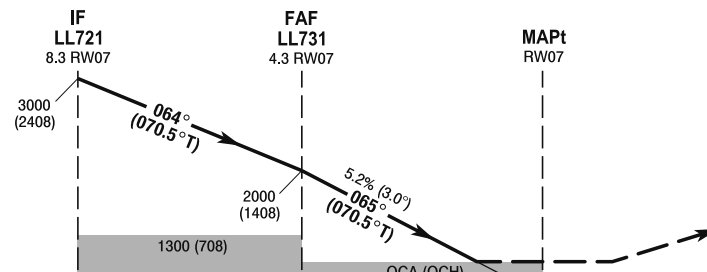


Correction: Obstacles.

TRANSITION ALTITUDE 6500

MISSED APPROACH

Climb straight ahead to LL751, turn left to LL701 climbing to 3000 (2408). Further instructions from ATC. Turn limited to 185 kt IAS max.



ELEV 592
(THR RWY 07)

SCALE 1 : 250 000

NM FROM THR RWY 07

OCA (OCH)					Distance FAF - MAPt 4.3 NM									
Cat. of ACFT	LNAV	A	B	C	D	Speed	kt	80	100	120	140	160	180	
		Straight - in		1010 (418)	1010 (418)	1010 (418)	1010 (418)	Time	min : s	3 : 12	2 : 34	2 : 08	1 : 50	1 : 36
						Rate of descent	ft / min	430	540	640	750	850	960	
Circling (OCH AAL)*					1110 (503)	1470 (863)	1570 (963)	2000 (1393)	Final approach distance/altitude (height)					
					Distance		4	3	2					
					Altitude (height)		1920 (1328)	1600 (1008)	1280 (688)					