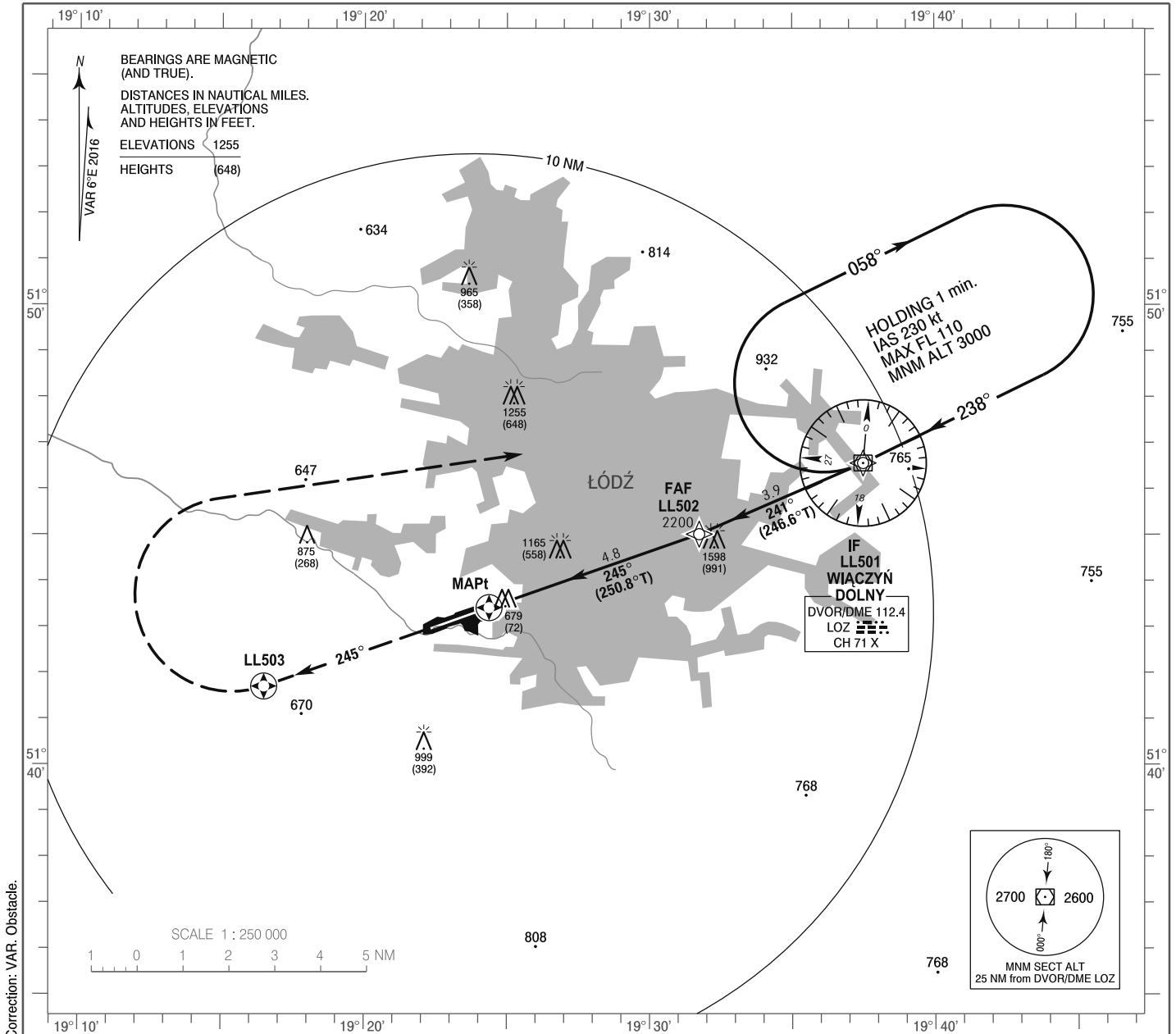


**INSTRUMENT  
APPROACH  
CHART - ICAO**

AERODROME ELEV 607 ft  
THR RWY 25 ELEV 606 ft  
HEIGHTS RELATED TO AD ELEV

Łódź TOWER 124.225  
ATIS 135.675

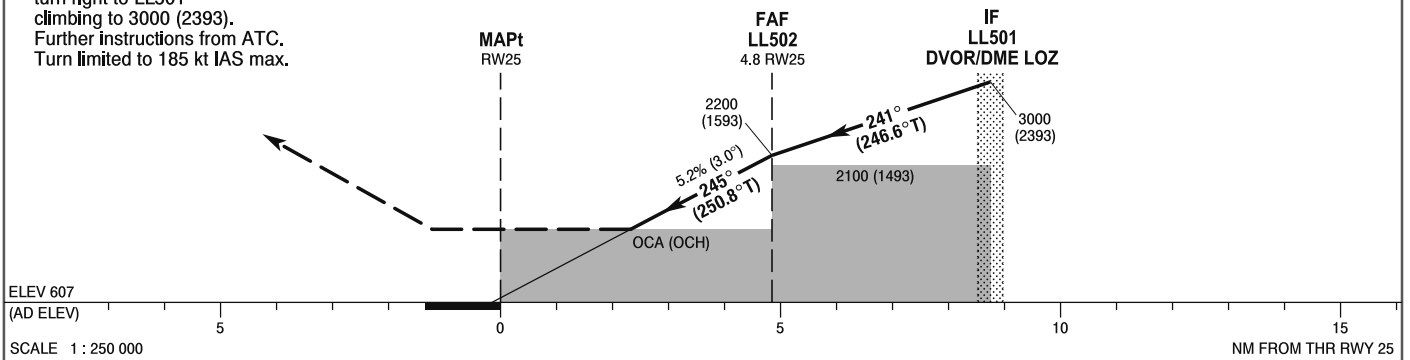
**Łódź - Lublinek  
RNAV (GNSS)  
RWY 25 (CAT A/B/C/D)**



**MISSED APPROACH**

Climb straight ahead to LL503  
turn right to LL501  
climbing to 3000 (2393).  
Further instructions from ATC.  
Turn limited to 185 kt IAS max.

TRANSITION ALTITUDE 6500



OCA (OCH)					Distance FAF - MAPt 4.8 NM								
Cat. of ACFT	LNAV	A	B	C	D	Speed	kt	80	100	120	140	160	180
		Straight - in		1400 (793)	1400 (793)	1400 (793)	1400 (793)	Time	min : s	3 : 38	2 : 55	2 : 25	2 : 05
						Rate of descent	ft / min	430	540	640	750	850	960
Circling*		1400 (793)	1470 (863)	1570 (963)	2000 (1393)	Final approach distance/altitude (height)							
							Distance	4		3			
							Altitude (height)	1930 (1323)		1610 (1003)			