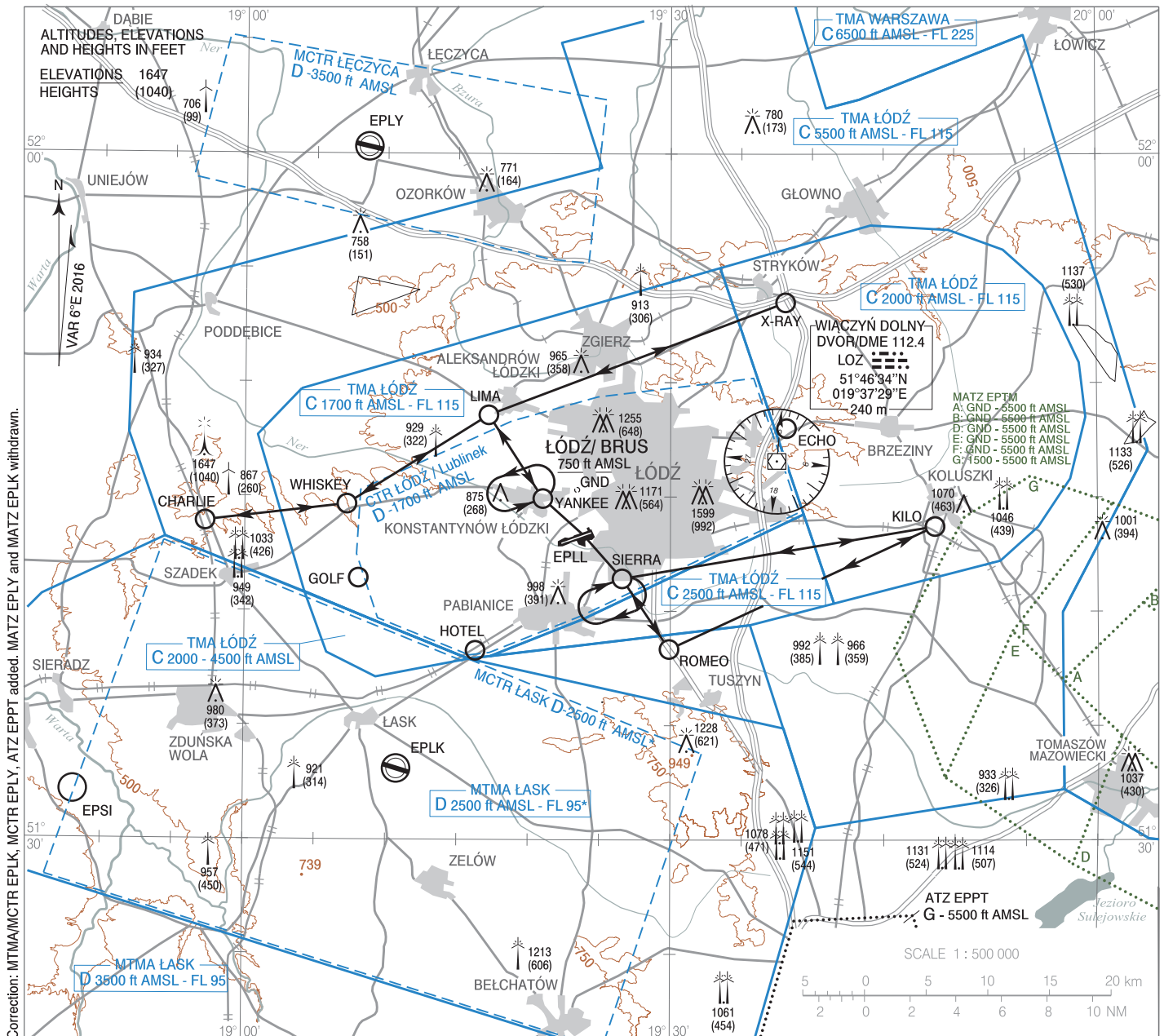


AERODROME ELEV 607 ft
HEIGHTS RELATED TO AD ELEV

Łódź TOWER 124.225

VFR
ARRIVAL AND DEPARTURE ROUTES

Łódź - Lublinek



Correction: MTMA/MCTR EPLK, MCTR EPLY, ATZ EPPT added. MATZ EPLY and MATZ EPLK withdrawn.

○ Areas of aerial activities - flights of flying models

POINT ID	LATITUDE	LONGITUDE	POINT DESCRIPTION
CHARLIE	51°43'55"N	018°57'13"E	Choszczewo town - intersection
ECHO	51°48'00"N	019°38'10"E	Industrial hall in Teolin town
GOLF	51°41'26"N	019°08'02"E	BTS GSM transceiver station in Pelagia town
HOTEL	51°38'16"N	019°16'17"E	Intersection of DK14 and S14 roads; 0.5 NM to the west of Chechio Drugie town
KILO	51°43'43"N	019°48'38"E	Southern side of Koluszki town
LIMA	51°48'34"N	019°17'10"E	Industrial halls 1 NM to the south west of Aleksandrów Łódzki town
ROMEO	51°38'20"N	019°29'55"E	Intersection of DK1 and S8 roads to the south of Rzgów town
SIERRA	51°41'25"N	019°26'36"E	Southern edge of ponds
WHISKEY	51°44'40"N	019°07'12"E	Kwiatkowice town near DK710 road
X-RAY	51°53'30"N	019°38'06"E	Intersection of A1 and A2 motorways
YANKEE	51°44'55"N	019°21'00"E	Kaufland 1 NM to the east of Konstancin Łódzki town

* excluding active TMA ŁÓDŹ

See AIP Poland AD 2 EPLL