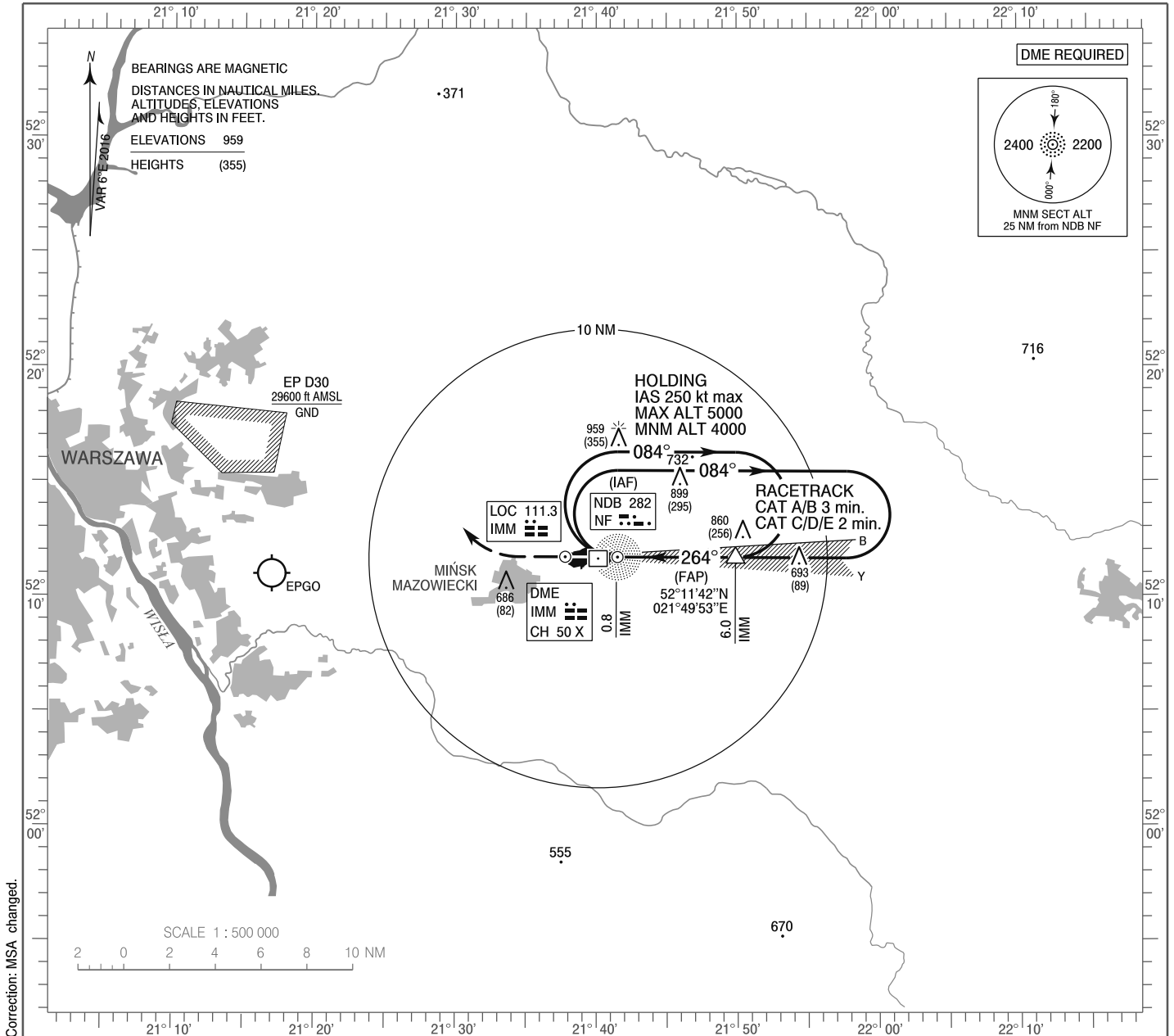


**INSTRUMENT
APPROACH
CHART - ICAO**

AERODROME ELEV 604 ft
THR RWY 26 ELEV 604 ft
HEIGHTS RELATED TO THR RWY 26

Mińsk APPROACH 136.250, 278.575
Mińsk TOWER 135.425, 279.075
ATIS 139.900

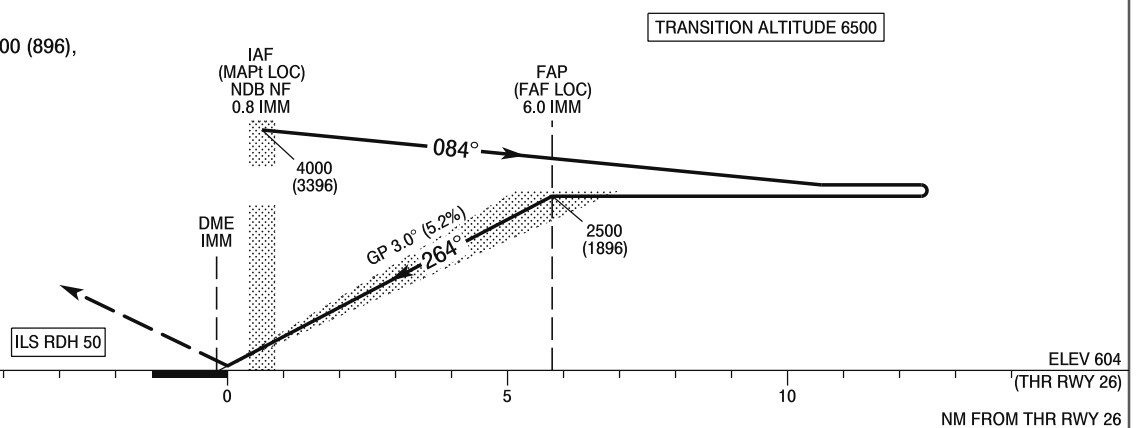
**MIŃSK MAZOWIECKI
ILS z or LOC z
RWY 26 (CAT A/B/C/D/E)**



Correction: MSA changed.

MISSED APPROACH

Climb straight ahead to 1500 (896),
then turn right to NDB NF
climbing to 4000 (3396)
or follow ATC instructions.



OCA (OCH)						Distance FAF - MAPt 5.2 NM								
Cat. of ACFT	A	B	C	D	E	Speed	kt	70	100	135	170	200	230	
Straight - in	Cat. I	876 (272)	886 (282)	896 (292)	906 (302)	925 (321)	Time	min : s	4 : 20	3 : 03	2 : 16	1 : 48	1 : 32	1 : 24
	LOC	1115 (511)	1115 (511)	1115 (511)	1115 (511)	1115 (511)	Rate of descent	ft / min	437	620	836	1053	1236	1354
Circling (OCH AAL)	1115 (511)	1115 (511)	1204 (600)	1365 (761)	1467 (863)									

**INSTRUMENT
APPROACH
CHART - ICAO**

MIŃSK MAZOWIECKI
ILS z or LOC z
RWY 26 (CAT A/B/C/D/E)

FIX / POINT	LATITUDE	LONGITUDE	FIX FORMATION	
IAF NDB NF	52°11'43.6"N	021°41'30.6"E		
FAP (FAF LOC)	52°11'41.6"N	021°49'53.0"E	270.42° GEO (264° MAG) LOC IMM	6.00 NM DME IMM
MAPt (LOC)	52°11'43.6"N	021°41'30.6"E	270.31° GEO (264° MAG) LOC IMM	0.84 NM DME IMM
Final approach descent angle: 3.00°				