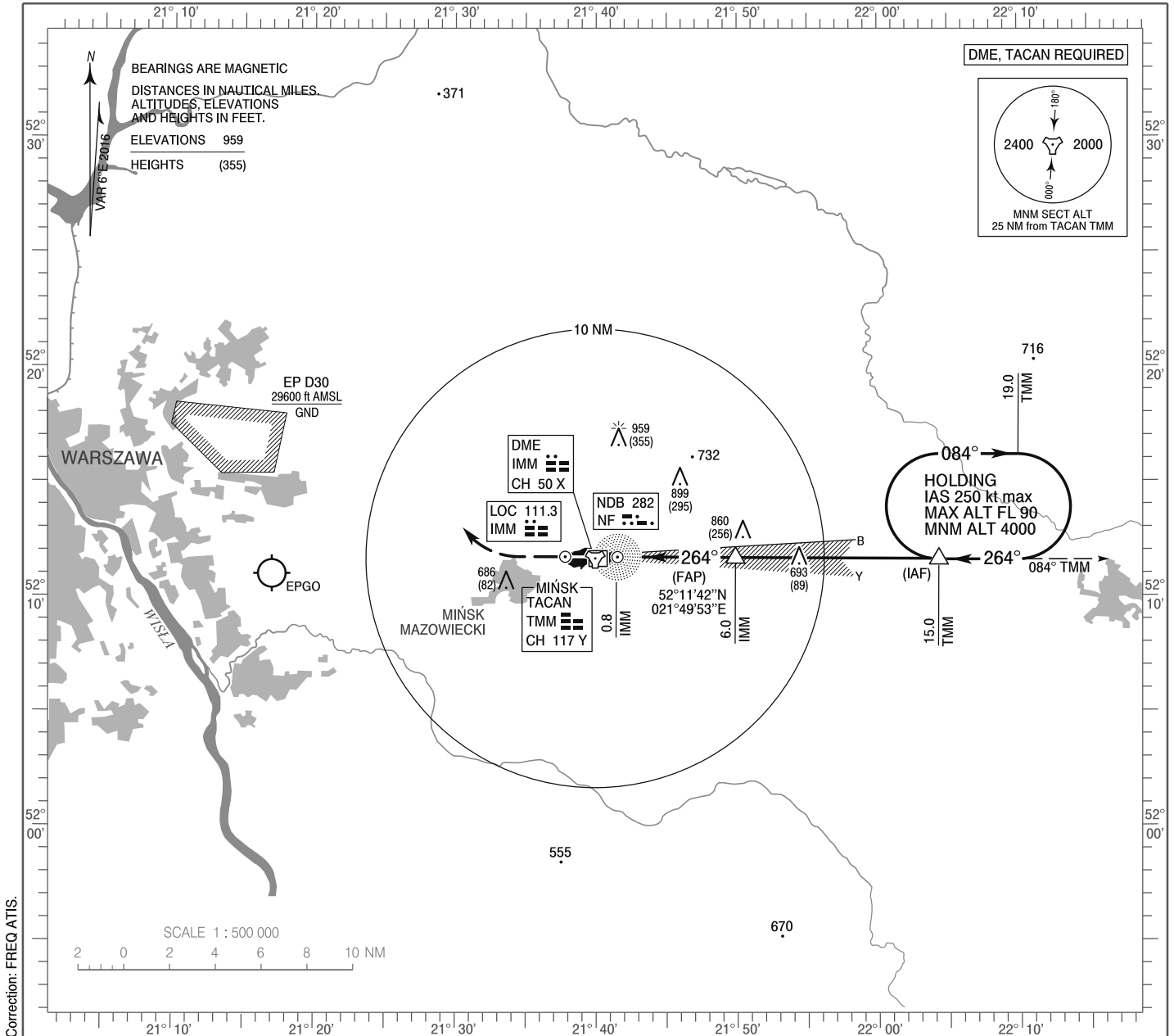


**INSTRUMENT  
APPROACH  
CHART - ICAO**

AERODROME ELEV 604 ft  
THR RWY 26 ELEV 604 ft  
HEIGHTS RELATED TO THR RWY 26

Mińsk APPROACH 136.250, 278.575  
Mińsk TOWER 135.425, 279.075  
ATIS 139.900

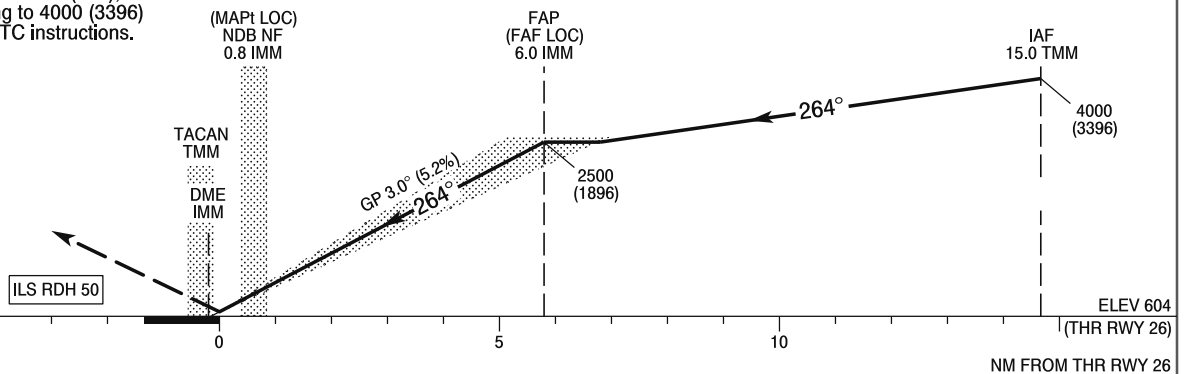
**MIŃSK MAZOWIECKI  
ILS y or LOC y  
RWY 26 (CAT A/B/C/D/E)**



**MISSED APPROACH**

Climb straight ahead to 1500 (896),  
then turn right climbing to 4000 (3396)  
to join IAF or follow ATC instructions.

TRANSITION ALTITUDE 6500



OCA (OCH)						Distance FAF - MAPt 5.2 NM								
Cat. of ACFT	A	B	C	D	E	Speed	kt	70	100	135	170	200	230	
Straight - in	Cat. I	876 (272)	886 (282)	896 (292)	906 (302)	925 (321)	Time	min : s	4 : 20	3 : 03	2 : 16	1 : 48	1 : 32	1 : 24
	LOC	1115 (511)	1115 (511)	1115 (511)	1115 (511)	1115 (511)	Rate of descent	ft / min	437	620	836	1053	1236	1354
Circling (OCH AAL)	1115 (511)	1115 (511)	1204 (600)	1365 (761)	1467 (863)									

**INSTRUMENT  
APPROACH  
CHART - ICAO**

**MIŃSK MAZOWIECKI**  
ILS y or LOC y  
RWY 26 (CAT A/B/C/D/E)

FIX / POINT	LATITUDE	LONGITUDE	FIX FORMATION	
IAF	52°11'36.6"N	022°04'17.9"E	090.04° GEO (084° MAG) TACAN TMM	15.00 NM TACAN TMM
FAP (FAF LOC)	52°11'41.6"N	021°49'53.0"E	270.42° GEO (264° MAG) LOC IMM	6.00 NM DME IMM
MAPt (LOC)	52°11'43.6"N	021°41'30.6"E	270.31° GEO (264° MAG) LOC IMM	0.84 NM DME IMM
Final approach descent angle: 3.00°				