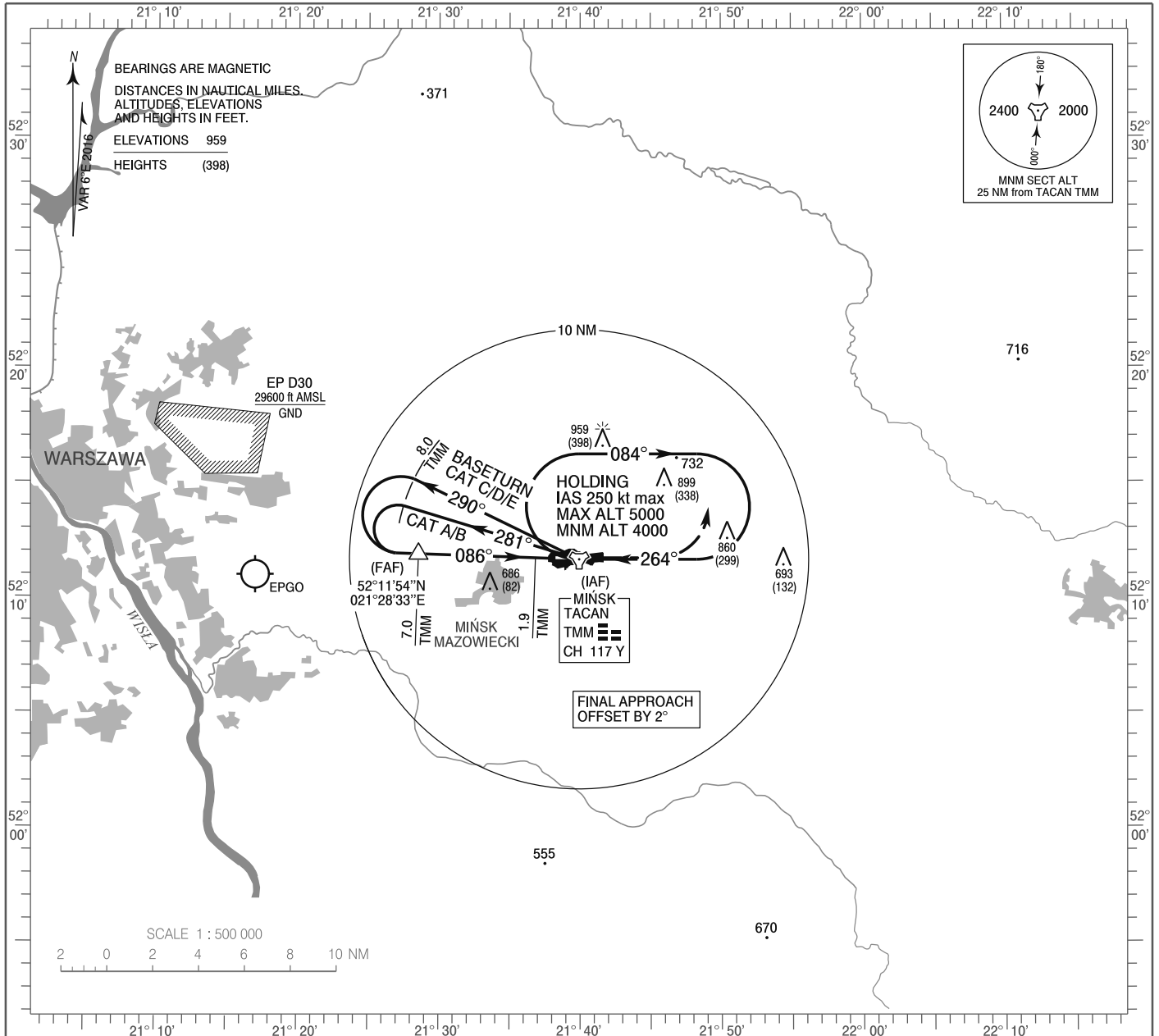


**INSTRUMENT
APPROACH
CHART - ICAO**

AERODROME ELEV 604 ft
THR RWY 08 ELEV 561 ft
HEIGHTS RELATED TO THR RWY 08

Mińsk APPROACH 136.250, 278.575
Mińsk TOWER 135.425, 279.075

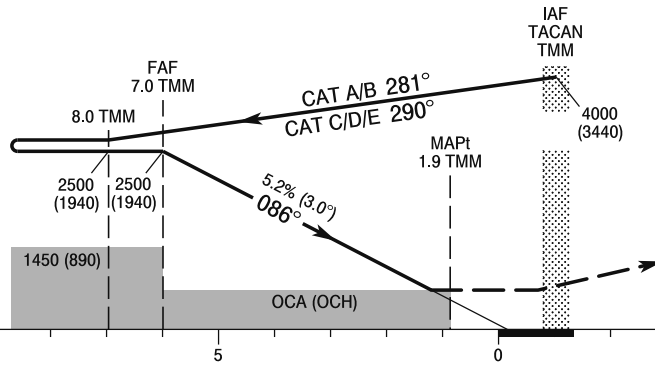
**MIŃSK MAZOWIECKI
TACAN
RWY 08 (CAT A/B/C/D/E)**



Correction: MSA.

TRANSITION ALTITUDE 6500

MISSED APPROACH
Climb straight ahead to 1500 (940), then turn left to TACAN TMM climbing to 4000 (3440) and follow ATC instructions.



ELEV 561
(THR RWY 08)

SCALE 1 : 250 000

NM FROM THR RWY 08

OCA (OCH)						Distance FAF - MAPt 5.1 NM							
Cat. of ACFT	A	B	C	D	E	Speed	kt	70	100	135	170	200	230
Straight - in	990 (429)	990 (429)	990 (429)	990 (429)	990 (429)	Time	min : s	4 : 17	3 : 00	2 : 13	1 : 45	1 : 29	1 : 21
						Rate of descent	ft / min	415	570	780	980	1140	1320
Circling (OCH AAL)	1115 (511)	1115 (511)	1204 (600)	1365 (761)	1467 (863)								

**INSTRUMENT
APPROACH
CHART - ICAO**

**MIŃSK MAZOWIECKI
TACAN
RWY 08 (CAT A/B/C/D/E)**

FIX / POINT	LATITUDE	LONGITUDE	FIX FORMATION	
IAF TACAN TMM	52°11'40.0"N	021°39'55.4"E		
FAF	52°11'54.0"N	021°28'33.0"E	271.97° GEO (266° MAG) TACAN TMM	7.00 NM TACAN TMM
MAPt	52°11'44.1"N	021°36'50.2"E	272.08° GEO (266° MAG) TACAN TMM	1.90 NM TACAN TMM
Final approach descent angle: 3.00°				